

They All Love Jack

F. E. WEATHERLY

STEPHEN ADAMS



1. When the ship is trim and rea-dy, And the jol-ly days are done, When the
 2. Where he goes their hearts go with him, E'en his ship he calls her "she;" Up a -
 3. When he's sail'd the world all o-ver, And a-gain he steps a-shore, There are



last good-byes are whisper'd, And Jack a-board is gone; The lass-es fall a -
 loft that "lit-tle che-rub" Sure a maid-en she must be. And as o'er the sea he
 scores of lass-es wait-ing To love him all the more; He may lose his gold-en



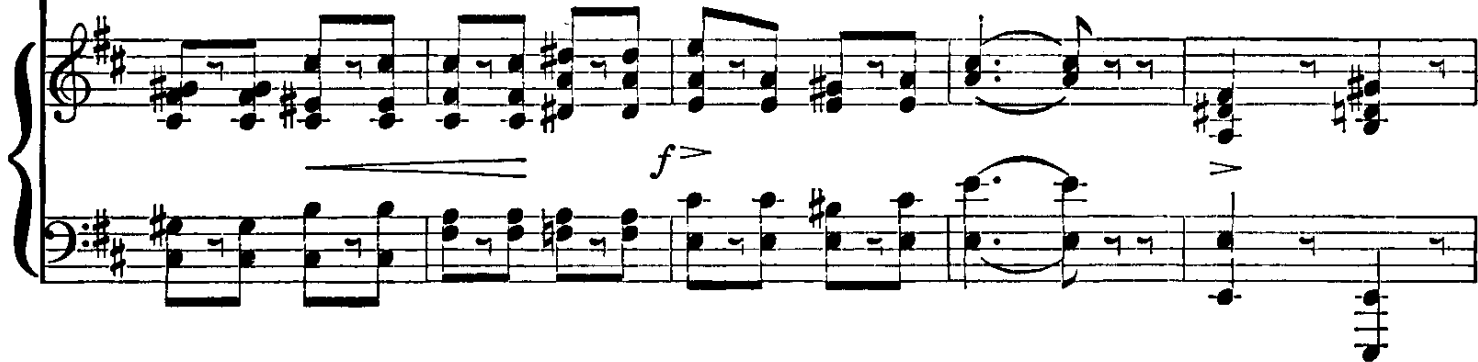
weep-ing, As they watch his ves-sel's track, For all the lands-men lov-ers Are
 trav-els, The mer-maids down be-low Would give their crys-tal kingdoms For the
 gui-neas, But a wife he'll nev-er lack, If he'd wed them all, they'd take him, For they



rall.



noth- ing af - ter Jack, For all the lands-men lov - ers Are noth- ing af - ter
 love of Jack, I trow, Would give their crys - tal kingdoms For the love of Jack, I
 all love Jack! If he'd wed them all, they'd take him, For they all, they all love



tempo.



Jack. For his heart is like the sea, Ev - er o - pen, brave, and free, And the
 trow. For his heart is like the sea, Ev - er o - pen, brave, and free, And the
 Jack! For his heart is like the sea, Ev - er o - pen, brave, and free, And the



girls must lonely be, Till his ship comes back ; But if love's the best of all . . That



can a man be - fall, . . . Why, Jack's the king of all, . . . For they all love Jack!

ad lib.

f *colla voce.*

The image shows a musical score for the song 'They All Love Jack'. It features a vocal line at the top and a piano accompaniment below. The vocal line includes the lyrics 'can a man be - fall, . . . Why, Jack's the king of all, . . . For they all love Jack!'. The piano part includes dynamic markings like 'f' and 'colla voce.' and performance instructions like 'ad lib.'.

Lorena

Rev. H. D. L. WEBSTER

J. P. WEBSTER

1. The years creep slow-ly by, Lo - re - na, The snow is on the grass a - gain, The
 2. A hundred months have pass'd, Lo - re - na, Since last I held that hand in mine, And
 3. We loved each oth - er then, Lo - re - na, More than we ev - er dared to tell; And
 4. The sto - ry of that past, Lo - re - na, A - las! I care not to re - peat, The
 5. Yes, these were words of thine, Lo - re - na, They burn with-in my mem-'ry yet; They
 6. It mat - ters lit - tle now, Lo - re - na, The past— is in th' e - ter - nal Past, Our

sun's low down the sky, Lo - re - na, The frost gleams where the flow'rs have been. But the
 felt that pulse beat fast, Lo - re - na, Tho' mine beat fast - er far than thine. A
 what we might have been, Lo - re - na, Had but our lov-ings prosper'd well — But
 hopes that could not last, Lo - re - na, They lived, but on - ly lived to cheat. I
 touched some tender chords, Lo - re - na, Which thrill and tremble with re - gret. 'Twas
 heads will soon lie low, Lo - re - na, Life's tide is ebb - ing out so fast. There

The image shows a musical score for the song 'Lorena'. It features a vocal line at the top and a piano accompaniment below. The vocal line includes six numbered verses of lyrics. The piano part includes dynamic markings like 'f' and 'colla voce.' and performance instructions like 'ad lib.'.