

CORBEAU

PAROLES ET MUSIQUE
BÉATRICE MARTIN

♩ = 80

1. Et deux par deux sans comp - ter nos morts Qu'on lais - se der -

Chords: F, C/E

Dynamic: *p*

Detailed description: This system contains the first two measures of the song. The vocal line is in 4/4 time with a tempo of 80. It starts with a quarter rest, followed by a quarter note G4, an eighth note A4, and a quarter note B4. The second measure begins with a quarter rest, followed by a quarter note G4, a quarter note A4, and a quarter note B4. The piano accompaniment consists of a single bass note G2 in the first measure and a single bass note G2 in the second measure. Chord diagrams for F and C/E are provided above the vocal line.

- rière des é - bau - ches fa - nées Des se - crets de car - rière Et trois par trois nos coeurs es - sou -

Chords: F, C/E, G/B, F

Detailed description: This system contains the next two measures. The vocal line continues with a quarter note G4, an eighth note A4, and a quarter note B4. The second measure begins with a quarter note G4, a quarter note A4, and a quarter note B4. The piano accompaniment features chords in the right hand and bass notes in the left hand. Chord diagrams for F, C/E, G/B, and F are provided above the vocal line.

- flés Des se - cous - ses folles on ré - flé - chit plus tard Maint' - nant il faut rê - ver Et

Chords: C/E, F, C/E, G/D

Detailed description: This system contains the final two measures. The vocal line continues with a quarter note G4, an eighth note A4, and a quarter note B4. The second measure begins with a quarter note G4, a quarter note A4, and a quarter note B4. The piano accompaniment features chords in the right hand and bass notes in the left hand. Chord diagrams for C/E, F, C/E, and G/D are provided above the vocal line.

Refrain

je n'sais plus à quoi pen - ser C'est dur d'être libre comme toi Et

mf

Dm C G/B

je n'sais plus à qui pen - ser C'est fi - ni rha - bille - toi

Dm C G/B

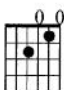
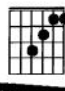
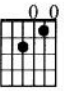
2. Et deux par deux on a - vale nos mots C'est dur d'ou - bli -

mp


F C/E G/B

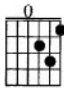
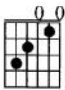
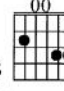
- er ce que l'on con - naît et ce qui im - prègne nos peaux Et trois par trois nos coeurs d'la par -

F C/E G/B F

C/E  F  C/E 


- tie On joue aux cou - teaux et on peut par - ta - ger le mê - me lit Et

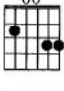


Dm  C  G/B 


Refrain je n'sais plus — à quoi — pen - ser — C'est dur d'être libre comme — toi Et

mf



Dm  C  G/B 

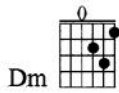
je n'sais plus — à qui — pen - ser C'est fi - ni rha - bille - toi Et



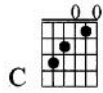
Dm  C  G/B 

je n'sais plus — à quoi pen - ser C'est dur d'être libre comme — toi Et

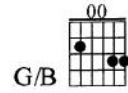




Dm



C



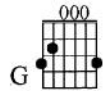
G/B



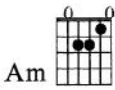
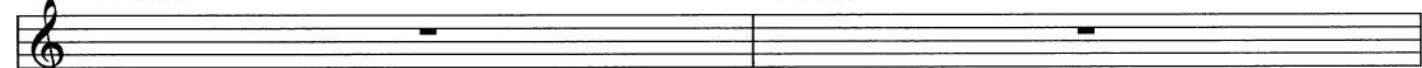
je n'sais plus à qui pen - ser C'est fi - ni rha - bille - toi



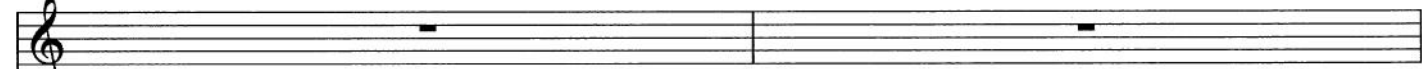
F



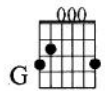
G



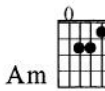
Am



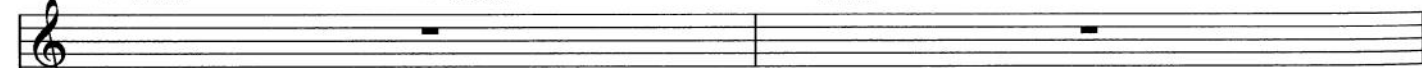
F

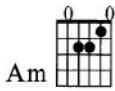


G



Am



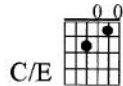


Am

3. Et deux par



F

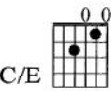


C/E



F

deux On a - vale nos mots C'est dur d'ou - bli - er ce que l'on a con - nu — qui a im - pré - gné



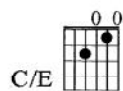
C/E



G/D



F



C/E

nos peaux Et trois par trois nos coeurs d'la par - tie On joue aux cou-



F



C/E



G/D



C/E

Fin

- teaux et on peut par - ta - ger — le mê - me lit

rit. e decresc.

pp