

Parisiennes Moonlight by Anathema

Transcribed by Anne-Lynn Degeest

♩ = 56

Musical notation for the first system, measures 1-3. The system consists of three staves: a vocal line (treble clef) with rests, a piano right-hand line (treble clef) with a continuous eighth-note triplet accompaniment, and a piano left-hand line (bass clef) with rests. A guitar chord diagram is shown below the piano left-hand line.

Musical notation for the second system, measures 4-6. The system consists of three staves: a vocal line (treble clef) with a triplet of eighth notes followed by a long note with a slur and the lyric "Ah"; a piano right-hand line (treble clef) with a continuous eighth-note triplet accompaniment; and a piano left-hand line (bass clef) with rests. A guitar chord diagram is shown below the piano left-hand line.

Musical notation for the third system, measures 7-9. The system consists of three staves: a vocal line (treble clef) with a long note with a slur and the lyric "Ah", followed by a triplet of eighth notes with the lyrics "I feel", a long note with a slur and the lyric "I know", and another triplet of eighth notes with the lyric "you I"; a piano right-hand line (treble clef) with a continuous eighth-note triplet accompaniment; and a piano left-hand line (bass clef) with rests. A guitar chord diagram is shown below the piano left-hand line.

10

don't know how I don't know why_ I see_____ you feel for me you

12

cried with me you would die for me I know_____ I need_ you I

14

want you to be free of all the pain_____ you hold in - side you

16

can - not hide I know you tried to be_____ who you could - n't be you

18

tried to see in - side of me and now I'm lea - ving you I don't



20

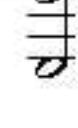
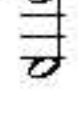
want to go a - way from you please trie to un - der - stand

22

take my hand be free of all the pain you hold in - side you

24

can - not hide I know you tried to feel to



26

feel

Slower