

# EMBRACEABLE YOU

Music by George Gershwin

Words by Ira Gershwin

© COPYRIGHT 1930 NEW WORLD MUSIC CORPORATION, USA.  
WARNER CHAPPELL MUSIC LIMITED, 129 PARK STREET, LONDON W1.  
ALL RIGHTS RESERVED. INTERNATIONAL COPYRIGHT SECURED.

Whimsically



*p* leisurely

Doz - ens of girls would storm -  
I went a - bout re - cit -

*mf* *p* smoothly



up;  
ing I had to lock my door.  
"Here's one who'll nev - er fall!"



Some - how I could - n't warm up To one be -  
But I'm a - fraid the writ - ing Is on the

G D7 G

fore. wall. What was it that con - trolled me?  
My nose I used to turn up

F#7 B F#7

What kept my love - life lean?  
When you'd be - siege my heart;

My in - tu - i - tion told  
Now I com - plete - ly burn

B Am7 D7 G

— me You'd come on the scene. La - dy,  
— up When you're slow to start. I'm a -

rall. e dim.

Em Em6 Em Em6 Em Em6 Em A7 Am D Am D

lis - ten to the rhy - thm of my heart - beat, And you'll get just what I  
 fraid you'll have to take the con - se - quen - ces; You've up - set the ap - ple

rall. e dim.

Chorus  
Rhythmically

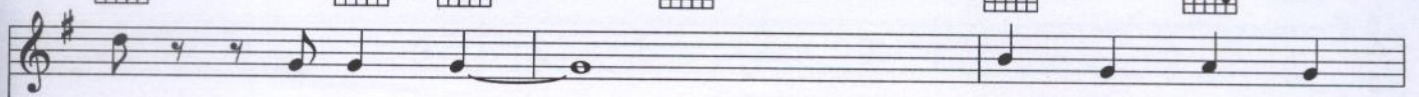
Am D Am D7 G C#dim

mean. cart. Em - brace me, My sweet em -  
 Em - brace me, My sweet em -

*p - mf*

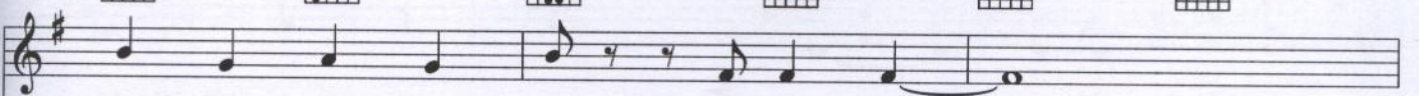
D7 C Ddim D7 Am F7 D7

brace - a - ble you! Em - brace me, You ir - re -  
 brace - a - ble you! Em - brace me, You ir - re -

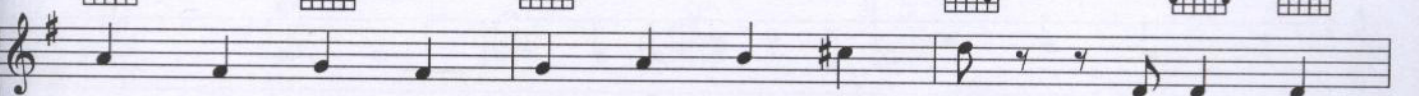


place - a - ble you! \_\_\_\_\_  
 place - a - ble you! \_\_\_\_\_

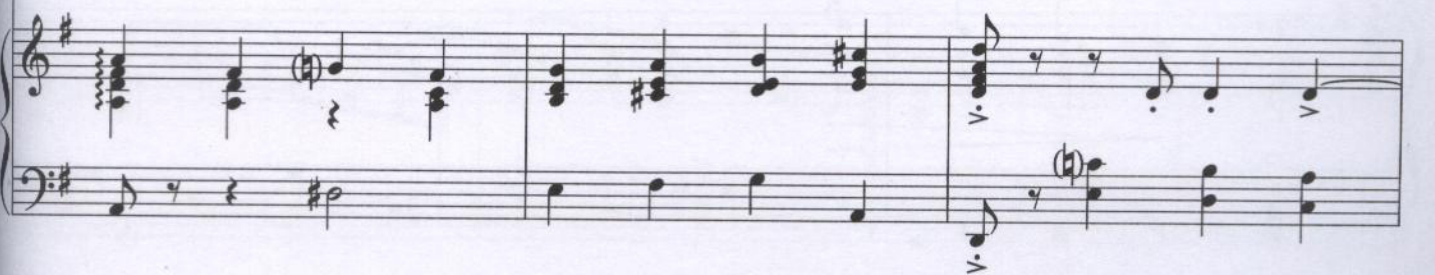
Just one look at  
 In your arms I



you, my heart grew tip - sy in me; \_\_\_\_\_  
 find love so de - lect - a - ble dear, \_\_\_\_\_



You and you a - lone bring out the gyp - sy in me! \_\_\_\_\_  
 I'm a - fraid it is - n't quite re - spect - a - ble dear. \_\_\_\_\_



G D7 G C#dim

I love all the man - y  
But hang it! Come on, let's

D7 C Ddim D7 A

charms a - bout you; A - bove all  
glo - ri - fy love! Ding dang it!

F7 D7 G7 G7sus4 C#dim G7

I want my arms a - bout you.  
You'll shout, "En - core!" if I love.

Don't be a naugh - ty ba - by,      Come to pa - pa, come to  
 Don't be a naugh - ty pa - pa,      Come to ba - by, come to

L.H.

pa - pa, do!      My sweet em - brace - a - ble  
 ba - by, do!      My sweet em - brace - a - ble

**1.**

you!      you! \_\_\_\_\_

**2.**