

Beauty and the Beast

from Walt Disney's BEAUTY AND THE BEAST
As Performed by Celine Dion and Peabo Bryson

Lyrics by HOWARD ASHMAN
Music by ALAN MENKEN

Moderately slow

F(add9)



Bb/F



C/F



F(add9)



Female: Ooh. _____ Male: Ooh. _____

mf

Bb/F



C/F



F(add9)



Bb/F



C/F



Female: Tale as old as _____ time, _____

F(add9)



Bb/F



C/F



F(add9)



true as it can be. Bare-ly e - ven

Am7

Bb(add9)

C7sus

C

friends, then some-bod - y bends un - ex - pect - ed - ly.

D

G/D

A/D

D(add9)

D

Male: Just a lit-tle change. Small, to say the

Am7/D

D7

Gmaj7

D(add9)/F#

Em7

D/A

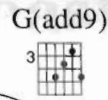
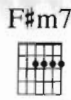
A7

least. Both a lit - tle scared, nei - ther one pre - pared. Both: Beau - ty and

D

F#m7

the Beast. Ev - er just the same.



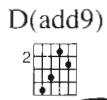
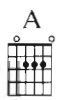
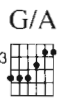
Ev - er a sur - prise. Ev - er as be -

Piano accompaniment for the first system.



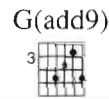
fore, and ev - er just as - sure as the sun will rise.

Piano accompaniment for the second system.



Male: Whoa, oh, oh. Woo oh.

Piano accompaniment for the third system, including a *cresc.* marking.



Male vocal line for the fourth system.

Piano accompaniment for the fourth system.

Asus



G/A



A7/G



F#m7



G(add9)



Both: Ev - er just the same.

Male: Yeah, yeah. .

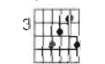
Ev - er a sur -



F#m7



G(add9)



F#m7



prise.

Both: Ev - er as be - fore,

Female: ev - er just - as



Bm



C



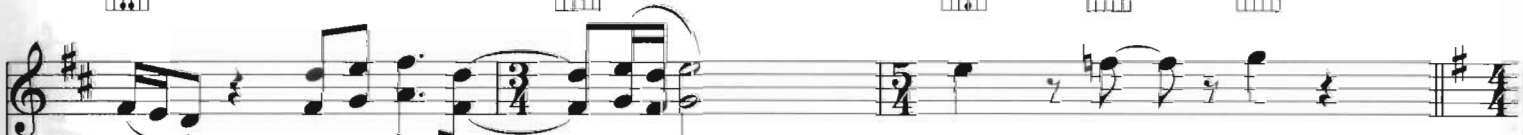
C7/Bb



F/A

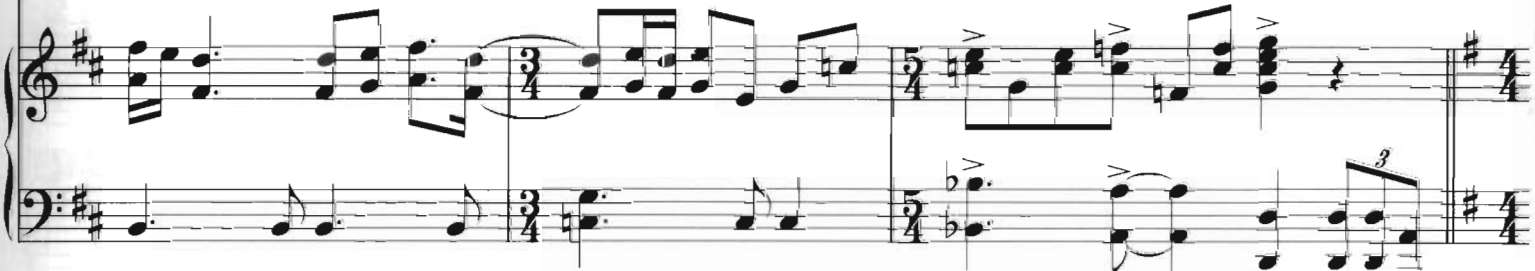


C/D



sure — Both: as the sun will — rise.

Male: Oh, oh, — oh.



G



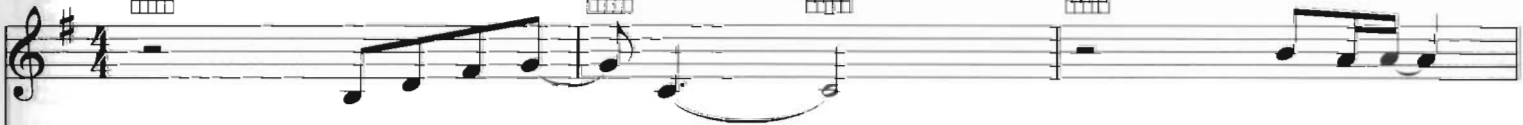
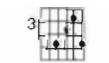
C/G



D/G



G(add9)



Female: Tale as old as — time,

tune as old —



C/G

D/G

G

G/D

B7#9



Musical notation for the first system, including vocal line and piano accompaniment.

as song.

Both: Bit-ter sweet and strange,

find-ing you can

Musical notation for the second system, including vocal line and piano accompaniment.

Em

C

Dsus

D

E(add9)



Musical notation for the third system, including vocal line and piano accompaniment.

change, learn - ing you were wrong.

Male: Cer-tain as the

Musical notation for the fourth system, including vocal line and piano accompaniment.

A/E

B/E

E(add9)

Bm7

E7



Musical notation for the fifth system, including vocal line and piano accompaniment.

Female: sun. (Cer-tain as the sun.)

Male: ris-ing in the East.

Female: Tale as old as

Musical notation for the sixth system, including vocal line and piano accompaniment.

Amaj7

C#m

F#m7

E/B

B7

E



Musical notation for the seventh system, including vocal line and piano accompaniment.

time, Both: song as old as rhyme.

Beau-ty and the Beast.

Musical notation for the eighth system, including vocal line and piano accompaniment.

C#m

E/B

Amaj7

C#m/G#

F#m7

E/B

B7



Female: Tale as old as — time, Male: song as old as — rhyme. Both: Beau-ty and the —



E

A/E

B/E

E



Beast.



A/E

B/E

Am/C

E/B

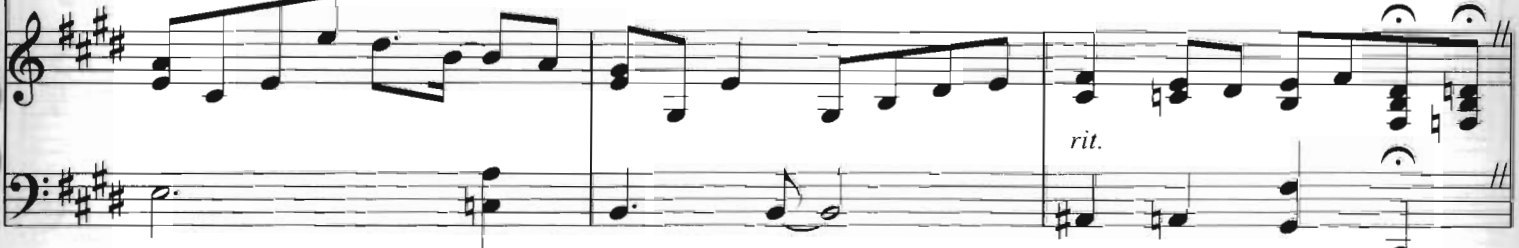
F#/A#

Am

E(add9)/G#

B/C#

C#7b9



F#m7

E/B

B7

E



Beau-ty and the Beast.

