

SOMEDAY WE'LL KNOW

Words and Music by GREGG ALEXANDER,
DANELLE BRISEBOIS and DEBRA HOLLAND

Steadily, not too fast

G#m7 **C#m7** **Amaj9** **I**

mf

2

G#m **C#m7** **Amaj9**

Nine - ty miles — out - side Chi - ca - go,

G#m **C#m** **Amaj9** **G#m7** **C#m7** **Amaj9**

can't stop driv - in'. I — don't know — why. — So man - y ques - tions,

F#m7(add4) **B**

I need an an - swer. Two years — lat - er you're still on my mind. —

Detailed description: This is a piano score for the song 'Someday We'll Know'. It features a treble and bass clef with a key signature of three sharps (F#, C#, G#) and a 4/4 time signature. The tempo is 'Steadily, not too fast'. The score is divided into four systems. The first system is an instrumental introduction with a dynamic marking of *mf*. The second system begins with a vocal line starting at measure 2, with lyrics 'Nine - ty miles — out - side Chi - ca - go,'. The third system continues the vocal line with lyrics 'can't stop driv - in'. I — don't know — why. — So man - y ques - tions,'. The fourth system concludes the vocal line with lyrics 'I need an an - swer. Two years — lat - er you're still on my mind. —'. Chord diagrams are provided above the vocal line for each measure, and piano accompaniment is shown in the bass clef. The piece ends with a final chord in the bass clef.

E/G#

C#m7

Amaj9

Esus2/G#

C#m7



What - ev - er hap - pened to A - me - li - a Ear - hart?
Does an - y - bod - y know the way to At - lan - tis

Who holds the stars — up —
or what the wind — says.



Amaj9

Esus2/G#

C#m7

Amaj9



— in the — sky? —
— when she — cries? —

Is true love — just once — in a life - time? —
I'm speed-in' by — the place — that I met you —



F#m7(add4)



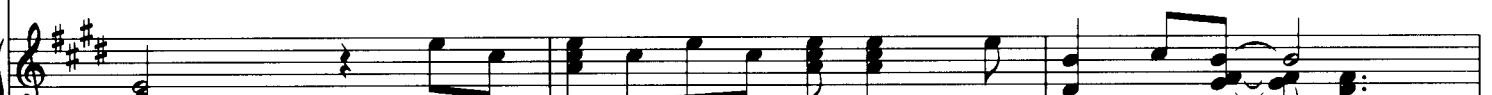
B

Bsus

B



— Did the cap - tain of the Ti - tan - ic cry? —
— for the nine - ty - sev - enth time —



B/A

§

G#m7

C#m7

Amaj9



— to - night. — }

Some - day we'll know if love — can move a moun - tain.



G#m7 C#m7 Amaj9 G#m7 C#m7

Some-day we'll know why the sky is blue. Some-day we'll know why

Amaj9

1 B Bsus B B/A Bsus/A B/A

I was - n't meant for you.

2,3 B Bsus B B/A Bsus/A G#m7 C#m7

Yeah, yeah, yeah, yeah. Some-day we'll know why Sam -

Amaj9 G#m7 C#m7 Amaj9

- son loved De - li - lah. One day I'll go danc - in' on the moon.

G#m7 C#m7 Amaj9 B

Some-day you'll know that I was the one for you.

To Coda ⊕

B/A G#m7 B

who.

B B/E Emaj7/A B

Play 3 times

B/A G#m7 C#m7 Amaj9

I bought a tick - et to the end of the rain - bow.

G#m7 4fr C#m7 4fr Amaj9 G#m7 4fr C#m7 4fr Amaj9

I watched the stars — crash — in the — sea. — If I could ask — God

F#m7(add4) 2fr

just one ques - tion, — “Why aren't_’

B B/A D.S. al Coda (take 2nd ending)

— you here — with me — to - night?’_’

CODA B7/F# Freely E(add9)

CODA B7/F# Freely E(add9)