

I'M NOT THAT GIRL

Music and Lyrics by
STEPHEN SCHWARTZ

Simple and steady, like a music box

Asus/D A5/C# A5/B A5/C# Asus/D A5/C#

p

A5/B Asus/D A5/C# A5/B A5/C#

ELPHABA:

Hands touch, — eyes meet, —

Asus/D A5/C# E/B A D/F# F#m E/G#

Sud-den si - lence, sud-den heat. — Hearts leap — in a gid-dy

D(add9) D E/G# C#m7 A/C# Bm A/D

whirl, He could be that boy, — but I'm not — that

Esus E Asus/D A5/C# A5/B A5/C#

girl. Don't dream — — — — — too far, —

Asus/D A5/C# E/B A D/F# F#m E/G#

Don't lose sight — of who you are. — Don't re-mem - ber that rush of

D6/9 D E/G# C#m7 A/C# Bm7 A/D

joy. He could be that boy, — I'm not — that girl. —

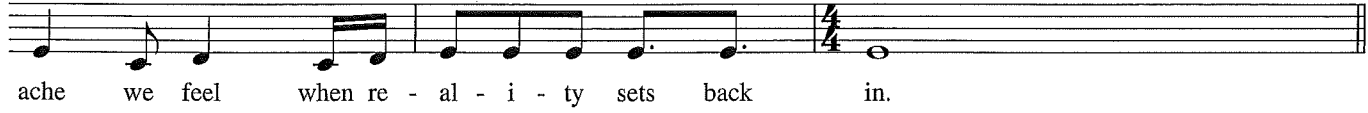
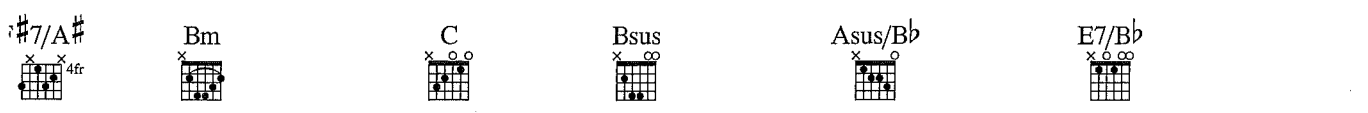
(♩ = ♩)



Ev - 'ry so of - ten we long to steal to the



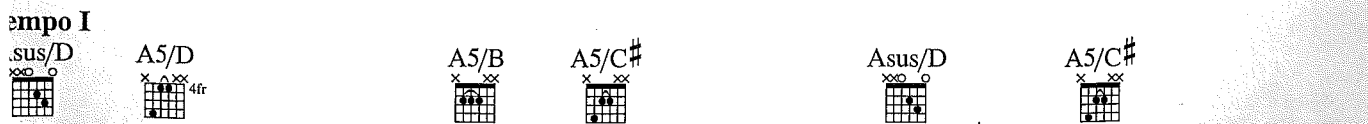
land of What-Might - Have - Been, But that does - n't soft - en the



ache we feel when re - al - i - ty sets back in.



poco rit. e dim.



Blithe smile, lithe limb, She who's win - some,



E/B A D/F# F#m E/G# D(add9) E(add2)/G#
 she wins him. — Gold hair — with a gen-tle curl — That's the girl he

C#m7 A/C# Bm7 A/D Esus
 chose, and heav - en knows,

E Asus/D A5/C# A5/B A5/C#
 I'm not — that girl. —

dim. *p*

Asus/D A5/C# Asus/B Asus/D A5/C#
 Don't wish, —

8va *pp*

A5/B A5/C# Asus/D A5/C# E/B A

don't start. — Wish-ing on - ly wounds the heart. —

Detailed description: This system shows the first two measures of a musical phrase. It features guitar chord diagrams for A5/B, A5/C#, Asus/D, A5/C#, E/B, and A. The vocal line is in treble clef with a key signature of two sharps (F# and C#) and a 6/4 time signature. The lyrics are "don't start. — Wish-ing on - ly wounds the heart. —".

(8va)

Detailed description: This system contains a vocal line and piano accompaniment. The vocal line is marked "(8va)" and continues the melody from the previous system. The piano accompaniment is in treble and bass clefs with a 6/4 time signature.

D/F# F#m E/G# D(add9) D E/G#

I was - n't born for the rose and pearl, There's a girl I

rit. *a tempo*

Detailed description: This system shows the third and fourth measures of the musical phrase. It includes guitar chord diagrams for D/F#, F#m, E/G#, D(add9), D, and E/G#. The vocal line is in treble clef with a key signature of two sharps and a 6/4 time signature. The lyrics are "I was - n't born for the rose and pearl, There's a girl I". Performance markings include "rit." and "a tempo".

C#m7 A/C# Bm7 A/D Esus

know — He loves — her so,

rit.

Detailed description: This system shows the fifth and sixth measures of the musical phrase. It includes guitar chord diagrams for C#m7, A/C#, Bm7, A/D, and Esus. The vocal line is in treble clef with a key signature of two sharps and a 4/4 time signature. The lyrics are "know — He loves — her so,". A "rit." marking is present.

E Asus/D A5/C# E/B

I'm not that girl...

a tempo *rit.*

Detailed description: This system shows the seventh and eighth measures of the musical phrase. It includes guitar chord diagrams for E, Asus/D, A5/C#, and E/B. The vocal line is in treble clef with a key signature of two sharps and a 4/4 time signature. The lyrics are "I'm not that girl...". Performance markings include "a tempo" and "rit.".