

GUITAR ① A FOGGY DAY

MUSIC BY G. GERSHWIN
 WORDS BY I. GERSHWIN
 ARR. BY DAVE WOLPE

MEDIUM SWING (♩ = 140)

A CMA7 Bb° Ami7 Eb9 Dmi7 G13 G13(b9)

C Ab9 Dmi7 G13 G9+ G13

C6/9 Gmi7 C9 C7(b9) FMA7 Bb9

C Emi7(b5) A7(#9) Dmi7 G13 G13(b9)

B C6/9 A13(b9) Dmi9 G13 G13(b9)

C B° Ami7 Bbmi7 Eb7 Ami7 D7 Fm7/G G7+(b9) C9

C C9 Gmi7 C7(b9) FMA7 Bb9(+11)

GUITAR — PG. 2

"A FOGGY DAY"

D7(+9) G13(+11) C6/9 D CMA7

A7+(b9) Dmi7 G13 C

Eb7 Dmi7 G9 G9+ CMA7

Gmi7 C7 FMA7 Bb9 CMA7

Emi7 A7 Dmi7 G9 G7(b9) E CMA7 C6 A7+(b9)

A7+(b9) Dmi7 Dmi7(b5) Dmi7 G13 G9 Db9 C

Bbmi7 Eb9 Ami9 D9 Abmi7 Db9(+11) Db9 C9 E

Gmi7 C7 FMA7 Bb9(+11) Bb/Ab CMA7/G Dmi7/G

CMA7/G Dmi7/G Emi7 A7+(#9) Dmi7 G13(+11) CMA9 2

1

NOTICE: The law provides penalties for any unauthorized copying or reproduction of any copyrighted musical work.

A FOGGY DAY

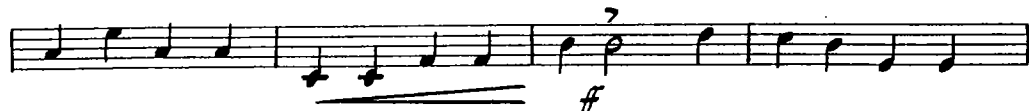
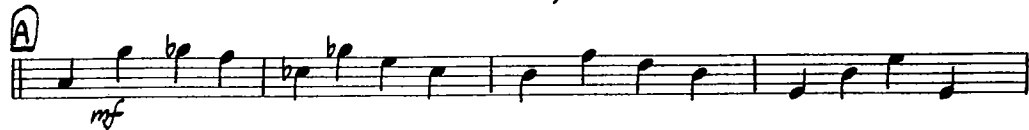
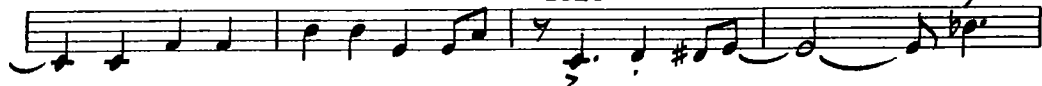
MUSIC BY G. GERSHWIN
WORDS BY I. GERSHWIN
ARR. BY DAVE WOLPE

BASS

MEDIUM SWING (♩ = 140)



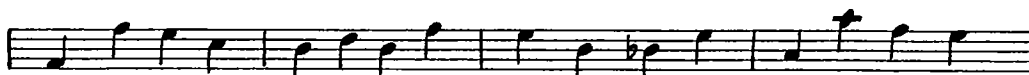
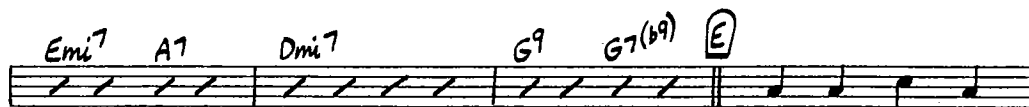
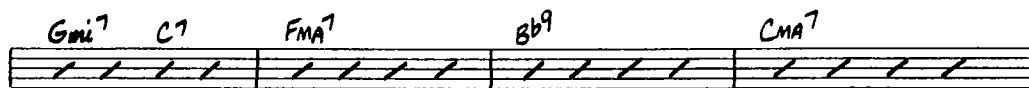
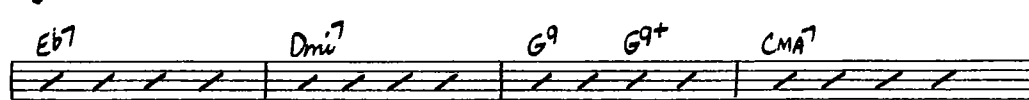
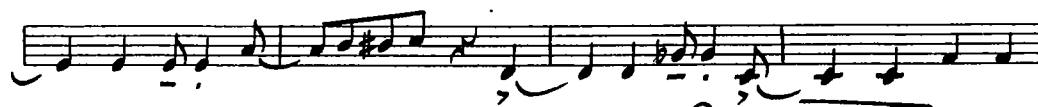
SOLO (w/pno.)



COPYRIGHT © 1937 BY GERSHWIN PUBLISHING CORP., COPYRIGHT RENEWED
THIS ARRANGEMENT COPYRIGHT © 1975 BY GERSHWIN PUBLISHING CORP., PUBLISHED UNDER LICENSE BY CHAPPELL & CO., INC., N.Y., N.Y.
INTERNATIONAL COPYRIGHT SECURED - MADE IN U.S.A. - ALL RIGHTS RESERVED INCLUDING PUBLIC PERFORMANCE FOR PROFIT
SOLE SELLING AGENT FOR THIS ARRANGEMENT: KENDOR MUSIC, INC., DELEVAN, N.Y. 13042

BASS - PG. 2

"A FOGGY DAY"



1

NOTICE: The law provides penalties for any unauthorized copying or reproduction of any copyrighted musical work.

A FOGGY DAY

PIANO

MUSIC BY G. GERSHWIN
WORDS BY I. GERSHWIN
ARR. BY DAVE WOLFE

(MEDIUM SWING) (♩=140)

ENS.

TRBS. A

SXS.

BR.

ENS. B

PIANO - PG. 2

"A FOGGY DAY"

ENS. TRBS.

SXS. BR.

ENS.

1st TRB. AD-LIB. TRB. BREAK

(TRB.) SXS.



Musical score for Piano, Page 3. The score consists of seven systems of music, each with a treble and bass staff. The first system includes chords: FMA7, Bb9, CMA7, Emi7 A7, Dmi7. The second system includes: BR. sax. G9, G7(b9), CMA7, Cb A7+(b9), Dmi7, Dmi7(b5), Dmi7. The third system includes: G13, G9, Db9, C, Bbmi7, Eb9, # Ami9, D9. The fourth system includes: Abmi9, Abmi7, Db9(+11), Db9, C9, Gmi7, C7, FMA7. The fifth system includes: TRBS. Bb9(+11), Bb/Ab, CMA7/G, Dmi7/G, CMA7/G, Dmi7/G, F Emi7, A7+(#9). The sixth system includes: (ALTO BREAK) CMA7, Fmi7, Bb7, Eb, ENS. Dmi7, G13(+11), CMA9, Eb, A#MA7.

Musical score for Piano, Page 4. The score consists of seven systems of music, each with a treble and bass staff. The first system includes chords: Gmi7(b5), Db13, C13, Fmi9, Bb13(+11), Eb9, D9, Eb9, F9. The second system includes: Gb13, F13, Gb13, Fmi7, Bb13, E9, SOLO EbMA9. The third system includes: TRBS. Bbmi7, Eb7, AbMA7, Db9, EbMA7. The fourth system includes: TRBS. BR. Gmi7, C7, F9, Fmi9/Bb, Bb9, EbMA7, sax. The fifth system includes: BR. ENS. C13(b9), C7(b9), Fmi7, Bb13, Bb13(b9), Eb9, D9, Eb9. The sixth system includes: Gb13, Ab13, Gb13, F13, Gb9(+11), F13, Fmi9/Bb, E9, Eb9, sax. Eb9.

1

NOTICE: The law provides penalties for any unauthorized copying or reproduction of any copyrighted musical work.

A FOGGY DAY

MUSIC BY G. GERSHWIN
WORDS BY I. GERSHWIN
ARR. BY DAVE WOLPE

1ST B^b TRUMPET

MEDIUM SWING (♩=140)

Handwritten musical score for 1st B^b Trumpet, page 1. The score is in G major and 4/4 time, marked "MEDIUM SWING (♩=140)". It consists of 10 staves of music. The notation includes notes, rests, slurs, and dynamics (f, mf). Chord symbols A, B, C, D, and E are placed above the staff. Measure numbers 2, 10, 3, and 14 are indicated.

1ST TRUMPET — PG. 2

"A FOGGY DAY"

Handwritten musical score for 1st Trumpet, page 2. The score is in G major and 4/4 time. It consists of 10 staves of music. The notation includes notes, rests, slurs, and dynamics (f, mf). Chord symbols G, H, and E are placed above the staff. Measure numbers 2, 5, 6, and 2 are indicated.

NOTICE: The law provides penalties for any unauthorized copying or reproduction of any copyrighted music.

A FOGGY DAY

MUSIC BY G. GERSHWIN
WORDS BY I. GERSHWIN
ARR. BY DAVE WOLPE

2ND B^b TRUMPET

MEDIUM SWING (♩ = 140)

1

2 A 10

3

C

D 14

E 2

2ND TRUMPET — PG. 2

"A FOGGY DAY"

F 5

G 2

H 6

I

J 2

K

NOTICE: The law provides penalties for any unauth copying or reproduction of any copyrighted music

A FOGGY DAY

MUSIC BY G. GERSHWIN
WORDS BY I. GERSHWIN
ARR. BY DAVE WOLPE

3RD B♭ TRUMPET

MEDIUM SWING (♩ = 140)

①

2 A 10

3

C

D 14

E 2

COPYRIGHT © 1937 BY GERSHWIN PUBLISHING CORP., COPYRIGHT RENEWED
THIS ARRANGEMENT COPYRIGHT © 1975 BY GERSHWIN PUBLISHING CORP., PUBLISHED UNDER LICENSE BY CHAPPELL & CO., INC., N.Y., N.Y.
INTERNATIONAL COPYRIGHT SECURED - MADE IN U.S.A. - ALL RIGHTS RESERVED

3RD TRUMPET — PG. 2

"A FOGGY DAY"

F 5

G 2

H 6

I

J 2

K

A FOGGY DAY

MUSIC BY G. GERSHWIN
WORDS BY I. GERSHWIN
ARR. BY DAVE WOLPE

4TH BB TRUMPET

(MEDIUM SWING) (♩ = 140)

①

4TH TRUMPET - PG. 2

"A FOGGY DAY"

1

NOTICE: The law provides penalties for any unauthorized copying or reproduction of any copyrighted musical work.

A FOGGY DAY

MUSIC BY G. GERSHWIN
WORDS BY I. GERSHWIN
ARR. BY DAVE WOLPE

1ST ALTO SAX.

MEDIUM SWING (♩=140)

Musical score for 1st Alto Saxophone, page 1. The score is in G major (two sharps) and 4/4 time. It begins with a dynamic marking of *f*. The first staff contains the main melody. Subsequent staves include a *SOLI* section, a section marked *ENS.*, and a section marked *SOLO* with a circled 'C' and a '3' below it. The score continues with various dynamics including *mf* and *mp*, and includes a section marked *SOLO* with a circled 'D' and a '4' below it. The piece concludes with a final *f* dynamic marking.

1ST ALTO - PG. 2

"A FOGGY DAY"

Musical score for 1st Alto Saxophone, page 2. The score continues from page 1. It features a *SOLI* section with a circled 'E' and a '3' below it. This is followed by a *BREAK* section with a circled 'G' and a '3' below it. The score then includes a section marked *SOLO* with a circled 'I' and a '7' below it, and another *SOLO* section with a circled 'J' and a '7' below it. The piece concludes with a final *f* dynamic marking.

NOTICE: The law provides penalties for any unauthorized copying or reproduction of any copyrighted musical work.

1

A FOGGY DAY

MUSIC BY G. GERSHWIN
WORDS BY I. GERSHWIN
ARR. BY DAVE WOLFE

2ND ED ALTO SAX.

MEDIUM SWING (♩ = 140)

1

MUSIC

8

SOLI

ENS.

3

3

3

mp

2ND ALTO — PG. 2

"A FOGGY DAY"

4

SOLI

5

2

G

7

H

I

SOLI

ENS.

ENS.

SOLI

ENS.

1

NOTICE: The law provides penalties for any copying or reproduction of any copyrighted m.

A FOGGY DAY

MUSIC BY G. GERSHWIN
WORDS BY I. GERSHWIN
ARR. BY DAVE WOLFE

1ST B^b TENOR SAX.

(MEDIUM SWING) (♩ = 140)

Musical score for 1st B^b Tenor Sax, page 1 of "A Foggy Day". The score is in G major and 4/4 time. It features a medium swing tempo with a metronome marking of 140. The score includes various dynamics such as *mp*, *f*, and *mf*, and includes performance instructions like *UNIS.*, *SOLI*, and *ENS.*. The score is divided into sections A, B, C, and D, with section A marked as *UNIS.* and sections C and D marked as *SOLI*. Section A includes a *mp* dynamic and a *SOLI* instruction. Section B includes a *f* dynamic. Section C includes a *f* dynamic and a *SOLI* instruction. Section D includes a *mf* dynamic. The score also includes a *mf* dynamic at the end of the piece.

1ST TENOR - PG. 2

"A FOGGY DAY"

Musical score for 1st Tenor Sax, page 2 of "A Foggy Day". The score continues from page 1 and includes sections E, F, G, H, and I. Section E includes a *f* dynamic and a *SOLI* instruction. Section F includes a *f* dynamic. Section G includes a *mf* dynamic. Section H includes a *p* dynamic. Section I includes a *f* dynamic and a *SOLI* instruction. The score also includes a *mf* dynamic at the end of the piece.

1

NOTICE: The law provides penalties for any unauthorized copying or reproduction of any copyrighted musical work.

A FOGGY DAY

2ND B^B TENOR SAX.

MUSIC BY G. GERSHWIN
WORDS BY I. GERSHWIN
ARR. BY DAVE WOLPE

(MEDIUM SWING) (♩ = 140)

Handwritten musical score for 2ND B^B TENOR SAX. The score is in G major (one sharp) and 4/4 time. It consists of ten staves of music. The tempo is marked as (MEDIUM SWING) with a quarter note equal to 140 beats per minute. The score includes various dynamics such as *p*, *mp*, *mf*, and *f*. Performance instructions include *UNIS.*, *SOLI*, and *ENS.*. Rehearsal marks A, B, C, and D are placed above the staves. The score is marked with a circled '1' in the top left corner.

2ND TENOR - PG. 2

"A FOGGY DAY"

Handwritten musical score for 2ND TENOR - PG. 2. The score is in G major (one sharp) and 4/4 time. It consists of ten staves of music. The tempo is marked as (MEDIUM SWING) with a quarter note equal to 140 beats per minute. The score includes various dynamics such as *p*, *mp*, *mf*, and *f*. Performance instructions include *SOLI* and *ENS.*. Rehearsal marks E, F, G, H, I, and J are placed above the staves. The score is marked with a circled '1' in the top left corner.

1

NOTICE: The law provides penalties for any unauthorized copying or reproduction of any copyrighted musical work.

A FOGGY DAY

E♭ BARITONE SAX.

MUSIC BY G. GERSHWIN
WORDS BY I. GERSHWIN
ARR. BY DAVE WOLPE

MEDIUM SWING (♩ = 140)

Musical score for E♭ Baritone Saxophone, page 1 of "A Foggy Day". The score is in G major and 4/4 time, with a tempo of 140 beats per minute. It features a melody with various dynamics (mf, f) and articulations (accents, slurs). Key performance instructions include "BASS TRB. CUE" at measures 2, 4, and 6, and "SOLI" at measures 3, 5, and 7. The piece concludes with a "6" marking at the end of the first line.

COPYRIGHT © 1937 BY GERSHWIN PUBLISHING CORP., COPYRIGHT RENEWED
THIS ARRANGEMENT COPYRIGHT © 1975 BY GERSHWIN PUBLISHING CORP., PUBLISHED UNDER LICENSE BY CHAPPELL & CO., INC., N.Y., N.Y.
INTERNATIONAL COPYRIGHT SECURED - MADE IN U.S.A. - ALL RIGHTS RESERVED INCLUDING PUBLIC PERFORMANCE FOR PROFIT
SOLE SELLING AGENT FOR THIS ARRANGEMENT: KENDOR MUSIC, INC., DELEVAN, N.Y. 14042

BARITONE - PG. 2

"A FOGGY DAY"

Musical score for Baritone, page 2 of "A Foggy Day". The score continues from page 1 and includes various performance markings such as "SOLI" (measures 1, 3, 5, 7, 9, 11), "ENS." (measures 2, 4, 6, 8, 10, 12), and "BASS TRB." (measure 11). It features complex rhythmic patterns and dynamic changes (mf, f). The score concludes with a "6" marking at the end of the first line.

1

NOTICE: The law provides penalties for any unauthorized copying or reproduction of any copyrighted musical work.

A FOGGY DAY

1ST TROMBONE

MUSIC BY G. GERSHWIN
WORDS BY I. GERSHWIN
ARR. BY DAVE WOLPE

MEDIUM SWING (♩ = 140)

1ST TROMBONE — PG. 2

"A FOGGY DAY"

Copying or reproduction of any copyrighted material

A FOGGY DAY

MUSIC BY G. GERSH
WORDS BY I. GERSHWIN
ARR. BY DAVE WOLPE

2ND TROMBONE

1

MEDIUM SWING (♩ = 140)

2ND TROMBONE — PG. 2

"A FOGGY DAY"

14

1

NOTICE: The law provides penalties for any unauthorized copying or reproduction of any copyrighted musical work.

A FOGGY DAY

MUSIC BY G. GERSHWIN
WORDS BY I. GERSHWIN
ARR. BY DAVE WOLPE

3RD TROMBONE

MEDIUM SWING (♩=140)

3RD TROMBONE — PG. 2

"A FOGGY DAY"

1

NOTICE: The law provides penalties for any unauthorized copying or reproduction of any copyrighted musical work.

A FOGGY DAY

BASS TROMBONE

MUSIC BY G. GERSHWIN
WORDS BY I. GERSHWIN
ARR. BY DAVE WOLFE

(MEDIUM SWING) (♩ = 140)

Musical score for Bass Trombone, page 1 of "A Foggy Day". The score is in 4/4 time with a tempo of 140 beats per minute. It features a melodic line with various dynamics (f, mf, ff) and articulation (accents, slurs). The score includes sections labeled A, B, C, and D. A "SOLI" section is also indicated. The key signature has one sharp (F#).

COPYRIGHT © 1937 BY GERSHWIN PUBLISHING CORP., COPYRIGHT RENEWED
THIS ARRANGEMENT COPYRIGHT © 1975 BY GERSHWIN PUBLISHING CORP., PUBLISHED UNDER LICENSE BY CHAPPELL & CO., INC., N.Y., N.Y.
INTERNATIONAL COPYRIGHT SECURED - MADE IN U.S.A. - ALL RIGHTS RESERVED INCLUDING PUBLIC PERFORMANCE FOR PROFIT
SOLE SELLING AGENT FOR THIS ARRANGEMENT: KENDOR MUSIC, INC., DELEVAN, N.Y. 12042

BASS TROMBONE — PG. 2

"A FOGGY DAY"

Musical score for Bass Trombone, page 2 of "A Foggy Day". The score continues from page 1, starting at measure 14. It includes sections labeled E, F, G, H, I, J, and K. Dynamics range from piano (p) to fortissimo (ff). The key signature changes to two flats (Bb) in section G. The score concludes with a final cadence.

1

DRUMS

A FOGGY DAY

MUSIC BY G. GERSHWIN
WORDS BY I. GERSHWIN
ARR. BY DAVE WOLFE

MEDIUM SWING (♩ = 140)

DRUMS — PG. 2

"A FOGGY DAY"

1

Musical staff with notes and chords. Chords: $Bbmi^7$, EB^9 , A^9 , $AbMA^9$, $Db^9(+11)$, Db^9 , Eb^9/bb , Fmi^7/bb . Annotations: ENS., TRBS.

Musical staff with notes and chords. Chords: E^9/bb , Fmi^7 , EB^9 , Fmi^7 , $F#mi^7$, Gmi^7 , $Abmi^9(+11)$, $Abmi^7$, $Db^9(+11)$, Db^9 , $G^7(+9)$, $C13(+11)$. Annotation: ENS.

Musical staff with notes and chords. Chords: $F^7(+9)$, $Eb^9(+11)$, Bb^9 , E^9/bb , $(DRS.)$, E^9/bb , $D^7(+9)$, $Db^9(+11)$.

Empty musical staff.

Empty musical staff.

Empty musical staff.

Handwritten musical score for bass, page 3 of "A Foggy Day". The score consists of ten staves of music in B-flat major, 4/4 time. It includes melodic lines, chord charts, and dynamic markings such as *mf* and *ff*. The piece concludes with a double bar line.

Chord charts shown in the score:

- Staff 3: EbMA7, Bbm7, Eb7, AbMA7
- Staff 4: Db7, EbMA7, Gbm7, C7, F7

Handwritten guitar score for "A Foggy Day" on page 3. The score consists of ten staves of music in B-flat major. It includes a melodic line with various articulations and dynamics, and a chordal accompaniment line with numerous chord symbols such as Bbm7, Eb7, AbMA7, Db9, EbMA7, Gmi7, C7, F9, Fmi9/Bb, Bb9, EbMA9, C13(b9), C7+(b9), Fmi7, Bb13, Eb9, Bbm7, Eb9, A9, AbMA9, Db9(+11), Db9, Eb/Bb, Fmi7/Bb, EbMA7/Bb, and Bb13. The score also features a circled 'G' at the beginning, a circled 'H' above a measure, and a circled 'I' above a measure.