

Suite 4 for Cello Solo

JOHANN SEBASTIAN BACH
BWV 1010

Präludium

6

11

16

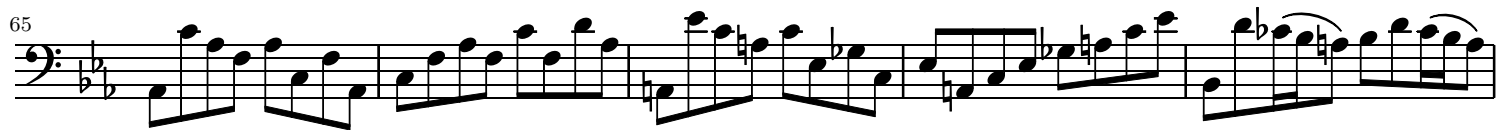
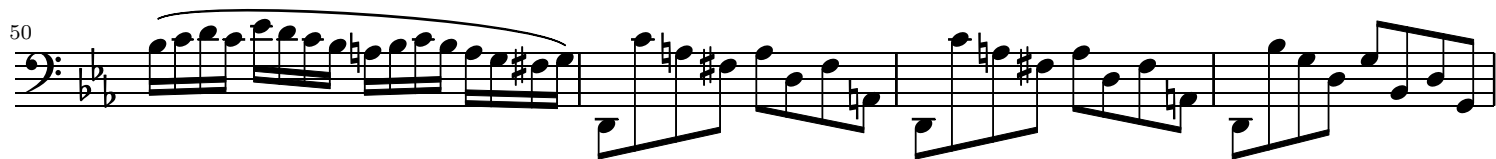
21

26

31

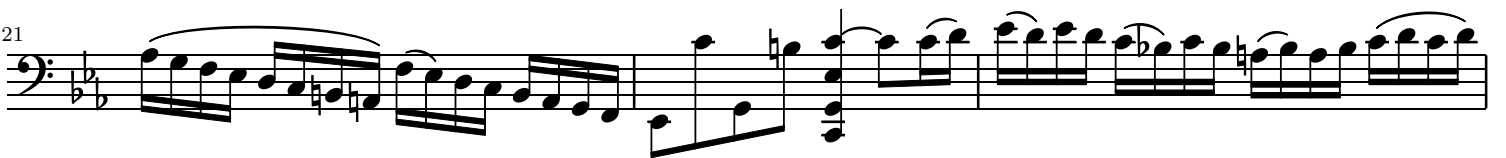
36

41





Allemande



27

30

34

38

This section of the musical score consists of four staves of music in bass clef, 3/4 time, and B-flat major. The music is characterized by a continuous eighth-note pattern with various articulations and slurs. Measure 27 begins with a flat sign. Measure 38 ends with a repeat sign and a fermata over the final note.

Courante

6

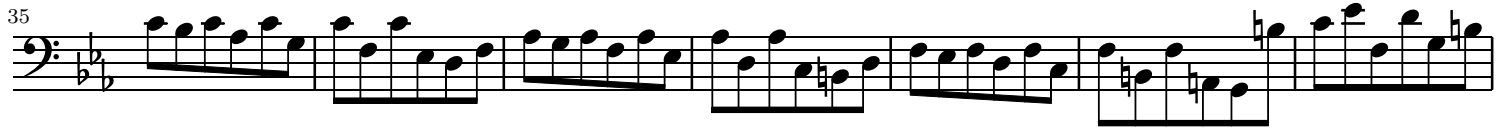
11

17

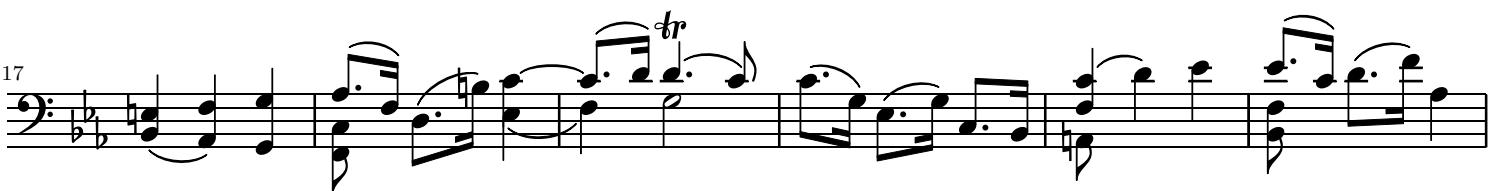
23

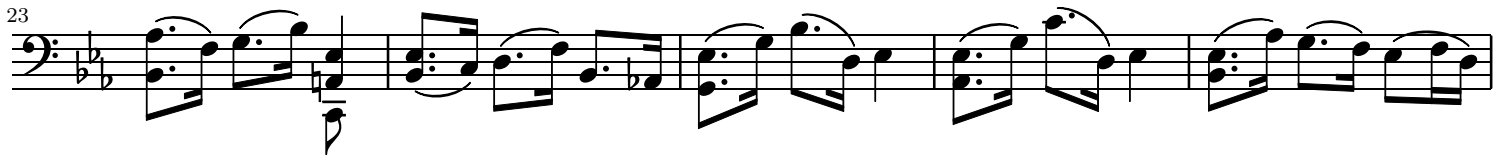
29

This section of the musical score consists of six staves of music in bass clef, 3/4 time, and B-flat major. The piece is marked 'Courante'. The music features a mix of eighth and sixteenth notes, with several triplet markings (indicated by a '3' over the notes). Measure 1 includes a trill ('tr') and triplet markings. Measure 23 contains a repeat sign. Measure 29 ends with a flat sign.



Sarabande





Bourrée 1



30

34

38

42

45

Bourrée 2

6 *(Bourrée 1 da capo)*

Gigue

4

7

10

