

VOLUME 22

Favorite STANDARDS

Soon

My Ideal ♦ Tangerine

My Old Flame ♦ The Nearness Of You

Stella By Starlight ♦ It Could Happen To You

Out Of Nowhere ♦ If I Should Lose You

Easy Living ♦ Wives And Lovers

I Remember You

Lover

For All Musicians • Lyrics Included





Play-A-Long Book & Recording Set



by Jamey Aebersold Jazz, Inc.

CONTENTS

INTRODUCTION	i
SELECTED DISCOGRAPHY	ii
SCALE SYLLABUS	iv
LYRICS	v

 CONCERT KEY SONGS & CHORD/SCALE PROGRESSIONS	1
 B \flat INSTRUMENT SONGS & CHORD/SCALE PROGRESSIONS	15
 E \flat INSTRUMENT SONGS & CHORD/SCALE PROGRESSIONS	29
 BASS CLEF INSTRUMENT SONGS & CHORD/SCALE PROGRESSIONS	43

INTRODUCTION

This is Jamey Aebersold's first album of standards, per se. Actually, a number of so-called "jazz tunes" that have appeared on earlier albums in this series have been based on standards. But then, jazzmen over the years have done much tinkering with standards, even when they kept to the original melody, as we shall see here.

Perhaps the most interesting tinkering on this album has been done to **Lover**. Originally written as a waltz, Les Paul's multi-track guitar recording in the late 1940s encouraged most jazzmen since then to play it in 4/4 time, often at tempos approaching the astronomical (Don Ellis was once clocked at $\text{♩}=440!$). The rhythm section on this record has supplied both a waltz format and a moderate-tempo 4/4 version.

The Nearness of You offers several alternatives—a chorus each of ballad style, bossa nova, and hot Latin. **My Ideal** and **If I Should Lose You** are now bossa novas, a style unknown when they were written.

Several of the songs on this album are closely associated with Charlie Parker, all recorded by him as ballads—**Out of Nowhere**, **My Old Flame** and **I Remember You**. The rhythm section here stays close to the Parker versions of the latter two, but moves the tempo up a bit for **Out of Nowhere**, as is common today.

Easy Living was introduced to jazz audiences by Billie Holiday, and it has become a vehicle for many modern hornmen who like its swooping, dramatic melody. For those who like their tempos easy but swinging, **Soon, It Could Happen to You**, **Stella By Starlight** and **Tangerine** should be a pleasure to play. **Wives and Lovers** isn't a jazz standard yet, but Thad Jones and Pepper Adams have made a persuasive case for it, as has the rhythm section here.

An important thing to note is that there is no one "correct" way to play a tune, although certain traditions have grown up around some often-played ones. On this album are a few alternatives as well as the traditional performances. You may want to try these tunes in other styles in your own group.

Phil Bailey—December, 1980

COVER DESIGN BY PETE GEARHART

COPYRIGHT ©1980 by JAMEY AEBERSOLD
All Rights Reserved
International Copyright Secured

All Copyrights Used By Permission

Published by
JAMEY AEBERSOLD JAZZ, Inc.
P.O. Box 1244
New Albany, IN 47151-1244

SELECTED DISCOGRAPHY

OP=out of print

STELLA BY STARLIGHT

Theme song from the motion picture "The Uninvited." First recorded by Victor Young.

Miles Davis (Columbia C 32025)

Kenny Dorham (Muse 5053)

Bill Evans (trio—Riverside 487)(solo overdub Verve 6-8526) (both OP)

Maynard Ferguson (Columbia JC 35480, JC 36361)

Dizzy Gillespie/Oscar Peterson (Pablo 2310-817)

Charlie Parker (Verve 2-2523)

Joe Pass/Oscar Peterson (Pablo 2625-705)

Bud Powell (Verve 6-8675)

Jimmy Raney (Muse 5004)

MY OLD FLAME

Introduced by Mae West with the Duke Ellington Orchestra in the motion picture "Belle of the Nineties."

Cal Collins (Concord Jazz S59)

Miles Davis (Prestige 24022, 24054)

Stan Getz (Prestige 24019, 24088)

Dizzy Gillespie (Verve 8015)

Billie Holiday (Atlantic 1614)

Charlie Parker (Warner Bros. 2WB 3198)

Joe Pass (Pablo 2625-703)

MY IDEAL

Introduced by Maurice Chevalier in the motion picture "Playboy of Paris."

Kenny Dorham (Prestige 7754)

John Coltrane (Prestige 24056)

Sonny Rollins (Prestige 24046)

EASY LIVING

Billie Holiday (MCA 2-4005)

Chet Baker (Trip 5569)

George Benson/Jack McDuff (Prestige 24072)

Clifford Brown (Blue Note BN-LA267-G)

Miles Davis (Prestige 24022, Fantasy 86001)

Bill Evans (Riverside 12-223) (OP)

Roland Kirk (Bethlehem BCP-6016)

Mel Lewis Band (Telarc DG 10044)

THE NEARNESS OF YOU

Introduced by Glenn Miller

Milt Jackson (Prestige 24048)

Blue Mitchell (Milestone 47055)

Charlie Parker et al (Jam Session) (Verve VE2-2508)

WIVES & LOVERS

Grammy Award performance by Jack Jones; inspired by, but not from, the movie of the same name.
Thad Jones/Pepper Adams (Milestone MSP-9001)

SOON

Introduced by Jerry Goff and Margaret Schilling in the Broadway show "Strike Up The Band."

Paul Desmond (Fantasy 8082)
Don Goldie (Argo LP 4010)(OP)
Red Garland (Prestige 7276)
Yehudi Menuhin/Stephane Grappelli (Angel S-37156)
Sonny Stitt (Muse 5067)

IF I SHOULD LOSE YOU

Introduced by Gladys Swarthout and John Boles in the motion picture "Rose of the Rancho."

Roland Kirk/Roy Haynes (Impulse AS-23)
Booker Little (Bethlehem BCP-6034)
Montgomery Brothers (Milestone 47051)
Charlie Parker w. Strings (Verve VE 2-2501)
Joe Pass (Pablo 2312-109)

IT COULD HAPPEN TO YOU

Introduced by Dorothy Lamour and Fred MacMurray in the film "And The Angels Sing."

Miles Davis (Prestige 24001)
Red Garland (Prestige 7658)
Hampton Hawes (solo) (RCA JPL1-1508)
J. J. Johnson (Blue Note BLP 81506)
Bud Powell (solo) (Blue Note BLP 81504)
Sonny Rollins (Riverside 12-241)(OP)

LOVER

Introduced by Jeanette MacDonald in the motion picture "Love Me Tonight."

Eddie "Lockjaw" Davis (Pablo 2310-778)
Don Ellis (Pacific Jazz PJ-55)(OP)
Red Garland (Prestige 24078)
John Coltrane (Prestige 7378)
Charlie Parker & Big Band (Verve VE2-2523)
Supersax (Capitol ST 11271)
Jack Teagarden w. Louis Armstrong (MCA 2-4057)

OUT OF NOWHERE

First recorded by Guy Lombardo. Featured in several films.

Charlie Parker (Warner Bros. 2WB 3198)
Joe Pass (Pablo 2312-109)
Jimmy Raney (Choice 1010)
Art Tatum (Pablo 2625-703)

TANGERINE

Introduced by Jimmy Dorsey with Bob Eberly and Helen O'Connell in the motion picture "The Fleet's In."

Chet Baker (CTI 6050)
Dexter Gordon (Prestige 10091)
Zoot Sims (Prestige 24061)
Ben Webster/Coleman Hawkins (Verve 2-2520)

I REMEMBER YOU

Introduced by Dorothy Lamour in the motion picture "The Fleet's In."

Gene Ammons/Dodo Marmarosa (Prestige 24021)
Hampton Hawes (Contemporary 3523)
Yusef Lateef/Doug Watkins (Prestige 7832)
Charlie Parker (Verve VE2-2523)
Horace Silver Trio (Blue Note BN-LA474-H2)

LYRICS

STELLA BY STARLIGHT

By Ned Washington and Victor Young

The song a robin sings
Through years of endless springs.
The murmur of a brook at eventide
That ripples by a nook
where two lovers hide.
A great symphonic theme,
that's Stella by starlight
and not a dream.
Boy: My heart and I agree
Girl: She's all of these and more
Boy: She's ev'rything on earth to me.
Girl: She's ev'rything that you'd adore.

Copyright ©1946 by Famous Music Corporation
Copyright renewed 1973 by Famous Music Corporation Used by Permission
The use of the lyrics of this song with any other music is expressly prohibited.

MY OLD FLAME

By Arthur Johnston & Sam Coslow

My old flame,
I can't even think of his name.
But it's funny now and then,
how my thoughts go flashing back again,
To my old flame.
My old flame,
my new lovers all seem so tame,
For I haven't met a gent
so magnificent or elegant as
my old flame.
I've met so many who had fascinatin' ways,
A fascinatin' gaze in their eyes;
Some who took me up to the skies.
But their attempts at love,
were only imitations of
My old flame,
I can't even think of his name.
But I'll never be the same,
until I discover what became of My old flame.

Copyright ©1934 by Famous Music Corporation
Copyright renewed 1961 by Famous Music Corporation Used by Permission
The use of the lyrics of this song with any other music is expressly prohibited.

MY IDEAL

By Leo Robin, Richard A. Whiting & Newell Chase

Will I ever find the girl (boy) in my mind
The one who is My Ideal.
Maybe she's (he's) a dream and yet she (he) might be
Just around the corner
waiting for me.
Will I recognize a light in her (his) eyes
That no other eyes reveal.
Or will I pass her (him) by
and never even know that she (he) is My Ideal.

Copyright ©1930 by Famous Music Corporation
Copyright renewed 1957 by Famous Music Corporation Used by Permission
The use of the lyrics of this song with any other music is expressly prohibited.

EASY LIVING

By Leo Robin & Ralph Rainger

Living for you
is easy living.
It's easy to live
When you're in love,
And I'm so in love,
there's nothing in life but you.
I never regret
the years I'm giving.
They're easy to give,
When you're in love,
I'm happy to do
what ever I do for you.
For you. Maybe I'm a fool
but it's fun
People say you rule me with one
wave of your hand,
Darling it's grand,
They just don't understand.
Living for you
is easy living.
It's easy to live
When you're in love,
And I'm so in love,
there's nothing in life but you.

Copyright ©1937 by Famous Music Corporation
Copyright renewed 1964 by Famous Music Corporation Used by Permission
The use of the lyrics of this song with any other music is expressly prohibited.

THE NEARNESS OF YOU

By Ned Washington & Hoagy Carmichael

It's not the pale moon that excites me,
that thrills and delights me
Oh, no it's just the nearness of you.
It isn't your sweet conversation
that brings this sensation.
Oh, no it's just the nearness of you.
When you're in my arms
and I feel you so close to me
All my wildest dreams come true
I need no soft lights to enchant me
If you'll only grant me the right
to hold you ever so tight
And to feel in the night
the nearness of you.

Copyright ©1937 and 1940 by Famous Music Corporation
Copyright renewed 1964 and 1967 by Famous Music Corporation Used by Permission
The use of the lyrics of this song with any other music is expressly prohibited.

WIVES & LOVERS

By Hal David & Burt F. Bacharach

Hey, little girl,
comb your hair
fix your make-up,
soon he will open the door.
Don't think because
there's a ring
on your finger
you needn't try any more.
For wives should always
be lovers too.

(continued on next page)

Run to his arms the moment
 he comes home to you.
 I'm warning you.
 Day after day
 there are girls
 at the office
 and men will always be men.
 Don't send him off
 with your hair
 still in curlers,
 You may not see him again,
 for wives should always
 be lovers too.
 Run to his arms
 the moment he comes home to you.

He's almost here.
 Hey, little girl,
 better wear something pretty,
 something you'd wear to
 go to the city;
 and dim all the lights,
 pour the wine,
 start the music,
 time to get ready for love.
 Oh, time to get ready,
 time to get ready,
 time to get ready for love.

Copyright ©1963 by Famous Music Corporation
 The use of the lyrics of this song with any other music is expressly prohibited.

SOON

By Ira and George Gershwin

Soon the lonely nights will be ended;
 soon, two hearts as one will be blended.
 I've found the happiness I've waited for;
 The only girl that I was fated for,
 Oh, soon a little cottage will find us
 safe with all our cares far behind us;
 The day you're mine this world will be in tune;
 Let's make that day come soon.

Copyright ©1934 and 1935 by Famous Music Corporation
 Copyright renewed 1961 and 1962 by Famous Music Corporation Used by Permission
 The use of the lyrics of this song with any other music is expressly prohibited.

IF I SHOULD LOSE YOU

By Leo Robin and Ralph Rainger

If I should lose you
 the stars would fall from the sky.
 If I should lose you
 the leaves would wither and die.
 The birds in May time
 would sing a mournful refrain
 and I would wander around
 hating the sound of rain.
 With you beside me
 the rose would bloom in the snow.
 With you beside me
 no winds of winter would blow.
 I gave you my love
 and I was living in a dream, but
 living would seem in vain if I
 lost you.

Copyright ©1935 by Famous Music Corporation
 Copyright renewed 1962 by Famous Music Corporation Used by Permission
 The use of the lyrics of this song with any other music is expressly prohibited.

IT COULD HAPPEN TO YOU

By Johnny Burke and Jimmy Van Heusen

Hide your heart from sight,
 Lock your dreams at night,
 It could happen to you.
 Don't count stars or you might stumble
 Someone drops a sigh and down you tumble.
 Keep an eye on Spring.

Run when church bells ring,
 It could happen to you.
 All I did was wonder how your arms would be,
 And it happened to me.

Copyright ©1944 by Famous Music Corporation
 Copyright renewed 1971 by Famous Music Corporation Used by Permission
 The use of the lyrics of this song with any other music is expressly prohibited.

LOVER

By Lorenz Hart & Richard Rodgers

Lover, when I'm near you
 And I hear you speak my name
 Softly in my ear you breathe a flame.
 Lover, when we're dancing
 keep on glancing in my eyes,
 till love's own entrancing music dies.
 All of my future is in you.
 Your ev'ry plan I design.
 Promise you'll always continue to be mine.
 Lover, please be tender
 when you're tender fears depart.
 Lover I surrender to my heart.

Copyright ©1932 and 1933 by Famous Music Corporation
 Copyright renewed 1959 and 1960 by Famous Music Corporation Used by Permission
 The use of the lyrics of this song with any other music is expressly prohibited.

OUT OF NOWHERE

By Edward Heyman & Johnny Green

You came to me
 from out of nowhere,
 You took my heart
 and found it free.
 Wonderful dreams, wonderful schemes from nowhere;
 Made ev'ry hour
 sweet as a flower for me.
 If you should go
 back to your nowhere,
 Leaving me with a memory.
 I'll always wait
 for your return out of nowhere;
 Hoping you'll bring your love to me.

Copyright ©1931 by Famous Music Corporation
 Copyright renewed 1958 by Famous Music Corporation Used by Permission
 The use of the lyrics of this song with any other music is expressly prohibited.

TANGERINE

By Johnny Mercer & Victor Schertzinger
 Tangerine She is all they claim
 With her eyes of night
 and lips as bright as flame
 Tangerine, When she dances by
 Senoritas stare and caballeros sigh.
 And I've seen Toasts to Tangerine
 Raised in ev'ry bar across the Argentine,
 Yes, she has them all on the run
 But her heart belongs to just one,
 Her heart belongs to Tangerine.

Copyright ©1942 by Famous Music Corporation
 Copyright renewed 1969 by Famous Music Corporation Used by Permission
 The use of the lyrics of this song with any other music is expressly prohibited.

I REMEMBER YOU

By Johnny Mercer & Victor Schertzinger

I remember you.
 You're the one who made my dreams come true
 a few kisses ago.
 I remember you.
 You're the one who said:
 "I love you, too." I do
 Didn't you know?
 I remember too a distant bell
 and stars that fell
 like rain, out of the blue.
 When my life is through
 and the angels ask me to recall
 the thrill of them all,
 then I shall tell them I remember you.

Copyright ©1942 by Famous Music Corporation
 Copyright renewed 1969 by Famous Music Corporation Used by Permission
 The use of the lyrics of this song with any other music is expressly prohibited.

CONCERT KEY CHORD PROGRESSIONS STELLA BY STARLIGHT

BY NED WASHINGTON & VICTOR YOUNG

Play 7 Choruses

Chord progression for the first 7 choruses:

G^o7 A- D7 D-
 G7 (G7+9) C F7 (F7+4) G C#⁶ F#7+9
 B- G- C7 D E- A7 F#⁶
 B7^b9 E7+9 A- C-^Δ
 G C#⁶ (C#-) F#7^b9 B⁶
 E7 +9 A⁶ D7 +9 G

SOLO

Chord progression for the solo section:

G^o7 A- D7 D- G7 C F7
 (G7+9) (F7+4)
 G C#⁶ F#7+9 B- G- C7 D E- A7 F#⁶ B7^b9
 E7^b9 A- C-^Δ G
 C#⁶ F#7^b9 B⁶ E7+9 A⁶ D7+9 G
 (C#-) G C7+^b C7+^b C^Δ

REPEAT OVER AND OVER FOR ENDING

Copyright ©1946 by Famous Music Corporation
 Copyright renewed 1973 by Famous Music Corporation Used by Permission
 The use of the lyrics of this song with any other music is expressly prohibited.



MY OLD FLAME

Play 3 Choruses

BY ARTHUR JOHNSTON & SAM COSLOW

G C- F7 B \flat E7 \flat 9 A- A \flat D7+9

G C7 F7 B \flat E \flat 7 D7 E \flat 7 A- D7 \flat 9 G C- F7

B \flat E7 \flat 9 A- A \flat D7 \flat 9 G C7 F7 B \flat E \flat 7

D7 E \flat 7 C- F7 B \flat C- F7 A \flat 7 G \flat 9 C7

F7 D7 E- A7 A- D7 D7 \flat 9 G C- F7 B \flat E7

A- A \flat D7 \flat 9 G C7 F7 B \flat E \flat 7 A- D7+9 G (A- D7)

SOLO

G C- F7 B \flat E7 \flat 9 A- A \flat D7+9 G C7 F7 B \flat E \flat 7 D7 E \flat 7 A- D7 \flat 9

G C- F7 B \flat E7 \flat 9 A- A \flat D7 \flat 9 G C7 F7 B \flat E \flat 7 D7 E \flat 7 C- F7

BRIDGE

B \flat C- F7 A \flat 7 G \flat 9 C7 F7 D7 E- A7 A- D7 D7 \flat 9

G C- F7 B \flat E7 \flat 9 A- A \flat D7 \flat 9 G C7 F7 B \flat E \flat 7 A- D7+9 G (A- D7)

A- D7+9 G

MY IDEAL



Play 5 Choruses

BY LEO ROBIN, RICHARD A. WHITING & NEWELL CHASE

(INTRO)

E^bΔ EΔ+4

E^b C7 (+9) F- D^b7 C7 F7

B^b7 F- B^b7 G7+9 C- F7 B7 B^b7

E^b C7 (+9) F- D^b7 C7 F7

F- A^b- E^b C- F7 B^b7 E^b (B^b7 sus)

SOLO

E^b C7+9 F- D^b7 C7 F7 B^b7 F- B^b7 G7+9 C- F7 B7 B^b7

E^b C7+9 F- D^b7 C7 F7 F- A^b- E^b C- F7 B^b7 E^b (B^b7 sus)



A[∅] A^b- G- F#- F- E^b E^bΔ

Copyright ©1930 by Famous Music Corporation
 Copyright renewed 1957 by Famous Music Corporation Used by Permission
 The use of the lyrics of this song with any other music is expressly prohibited.



EASY LIVING

Play 3 Choruses

BY LEO ROBIN & RALPH RAINGER

(PIANO INTRO)

G- C7+9 F- Bb7 G- C7+9 F- Bb7 $\frac{6}{8}$

E^b Eo7 F- F#o7 E^b/G B^b- E^b7 A^b A^b- D^b7

G- C7 F- B^b7 B^b7+ G7 C7 F- B^b7 2. F- B^b7 E^b

C#- F#7 B A^b- C#- F#7 B A^b- C#- F#7 B

A^b- F- B^b7 B^b7+ E^b Eo7 F- F#o7

E^b/G B^b- E^b7 A^b A^b- D^b7 G- C7 F- B^b7 E^b (F- B^b7)

SOLO

E^b Eo7 F- F#o7 E^b/G B^b- E^b7 A^b A^b- D^b7 G- C7+9 1. F- B^b7 B^b7+

G7 C7 F- B^b7 2. F- B^b7 E^b C#- F#7 B A^b- C#- F#7

B A^b- C#- F#7 B A^b- F- B^b7 B^b7+ E^b Eo7

F- F#o7 E^b/G B^b- E^b7 A^b A^b- D^b7 G- C7+9 F- B^b7 E^b (F- B^b7)

F- B^b7 $\frac{6}{8}$ E^b

Copyright ©1937 by Famous Music Corporation
 Copyright renewed 1964 by Famous Music Corporation Used by Permission
 The use of the lyrics of this song with any other music is expressly prohibited.

THE NEARNESS OF YOU



Play 4 Choruses

BY NED WASHINGTON & HOAGY CARMICHAEL

Musical notation for the first four choruses, including chord symbols and melodic lines.

Chord symbols: F, C-, F7sus, B^b, B^bo7, A-, A^b7, G-, C7, A-, A^b7(D7), G-, C7, F, C-, F7sus, B^b, B^bo7, A-, A^b7, G-, C7, F, E^b7, F6, G-, C7, F, C-, F7, B^b, A^o, D7^b₉, G7+4, C7(G- C7), F, C-, F7sus, B^b, B^bo7, A-, A^b7, G-, C7, A^o, D7^b₉, G-, C7^b₉, F, D-, G-, C7

SOLO

Handwritten chord progression for the solo section:

F C- F7sus B^b B^bo7 A- A^b7 G- C7 A- A^b7 G- C7 (D7)
 F C- F7sus B^b B^bo7 A- A^b7 G- C7 F E^b7 F6

BRIDGE

Handwritten chord progression for the bridge section:

G- C7 F C- F7 B^b A^o D7^b₉ G7+4 C7
 F C- F7sus B^b B^bo7 A- A^b7 G- C7
 A^o D7^b₉ G- C7^b₉ F D- G- C7
 B^b B^b- A- A^b- G- G^b4 F4



WIVES AND LOVERS

Play 5 Choruses

BY HAL DAVID & BURT F. BACHARACH

Musical notation for the first five choruses, including treble clef, key signature (one flat), and various chord symbols: F-, G-, C-, F7, A ϕ , D7, E^b, A-, D7, D^b, G-, C7, F-, B^b7, E^b, C7^b9, F-, B^b7, E^b, C7^b9, F-, B^b7, F-, B^b7, F-, B^b7, E^b, C7+9.

SOLO

Musical notation for the solo section, including treble clef, key signature (one flat), and various chord symbols: F-, B^b7, G-, C7.

Musical notation for the final two lines of the solo section, including treble clef, key signature (one flat), and various chord symbols: F-, B^b7, E^b, C7^b9, F-, B^b7, E^b, C7^b9, F-, B^b7, F-, B^b7, F-, B^b7, E^b, C7+9.

Musical notation for the final line of the solo section, including treble clef, key signature (one flat), and various chord symbols: E^b Δ , D^b Δ , B Δ , D^b Δ , E^b Δ .

REPEAT TILL FADE OUT - - - - -

Copyright ©1963 by Famous Music Corporation
The use of the lyrics of this song with any other music is expressly prohibited

SOON



BY IRA AND GEORGE GERSHWIN

Play 7 Choruses

Musical notation for the first seven choruses, including chord symbols: Eb, Bb-, C7+, C7, F-, Ab-, Bb7+, Bb7, Eb, Bb-, Eb7, Ab, Gb, C7+9, F-, Bb7, G-, C-, F-, Bb7b9, Eb, Bb-, C7+, C7, F-, Ab-, Bb7, Eb, Bb-, Eb7, Ab, Db7, G-, C7+9, F-, Bb7, Eb, (F- Bb7).

SOLO

Musical notation for the solo section, including chord symbols: Eb, Bb-, C7+ C7, F-, Ab-, Bb7, Eb, Bb-, Eb7, Ab, Gb, C7+9, F-, Bb7, G-, C-, F-, Bb7b9, Eb, Bb-, Eb7, Ab, Db7, G-, C7+9, F-, Bb7, Eb, (F- Bb7), G-, C7+9, F-, Bb7, G-, C7+9, F-, Bb7, Eb.

Copyright ©1934 and 1935 by Famous Music Corporation
 Copyright renewed 1961 and 1962 by Famous Music Corporation Used by Permission
 The use of the lyrics of this song with any other music is expressly prohibited.

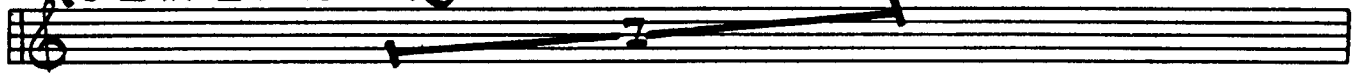


IF I SHOULD LOSE YOU

Play 4 Choruses

BY LEO ROBIN & RALPH RAINGER

(8 BAR INTRO) A7/D



$\frac{F\#o7}{G}$ G- A ϕ D7+9 $\frac{F\#o7}{G}$ G- F- B \flat 7 $\frac{B\flat7+5}{E\flat}$ E \flat
 F- B \flat 7 $\frac{B\flat7+5}{E\flat}$ E \flat C- 1. F7 C- F7 B \flat o7 B \flat
 A ϕ D7 $\frac{F\#o7}{G}$ G- C7 C- A \flat 7 F7 D7 2. F7
 C- F7 B \flat o7 B \flat D7 \flat 9 G- C- F7 B \flat A ϕ D7+9

SOLO

$\frac{F\#o7}{G}$ G- A ϕ D7+9 $\frac{F\#o7}{G}$ G- F- B \flat 7 $\frac{B\flat7+5}{E\flat}$ E \flat F- B \flat 7 $\frac{B\flat7+5}{E\flat}$ E \flat C-
 1. F7 C- F7 B \flat o7 B \flat A ϕ D7 $\frac{F\#o7}{G}$ G- C7 C- A \flat 7 F7 D7
 2. F7 C- F7 B \flat o7 B \flat D7 \flat 9 G- C- F7 \oplus B \flat A ϕ D7+9
 \oplus B \flat Δ E \flat Δ A \flat Δ D \flat Δ G \flat Δ B Δ B \flat Δ

PLAY CODA LAST TIME ONLY

IT COULD HAPPEN TO YOU



Play 7 Choruses

BY JOHNNY BURKE & JIMMY VAN HEUSEN

Chorus 1:

G B \flat E7 \flat 9 A- C \sharp \flat F \sharp 7 G C

B7+9 E7 A- C- Δ G F \sharp \flat B7+9 E-

A7 A- D7 G B \flat E7 \flat 9

A- C \sharp \flat F \sharp 7 G C B7+9 E7 (E7+) A-

C- Δ G B- (B \flat) E7 \flat 9 A- D7 G A- D7

SOLO

Chorus 2:

G B \flat E7 \flat 9 A- C \sharp \flat F \sharp 7 G C B7+9 E7

A- C- Δ G F \sharp \flat B7+9 E- A7 A- D7

G B \flat E7 \flat 9 A- C \sharp \flat F \sharp 7 G C B7+9 E7 (E7+9)

A- C- Δ G B- E7 \flat 9 A- D7 \oplus G A- D7

\oplus B \flat - E \flat 7 A- D7 C- F7 B \flat Δ

Copyright © 1944 by Famous Music Corporation
 Copyright renewed 1971 by Famous Music Corporation Used by Permission
 The use of the lyrics of this song with any other music is expressly prohibited.



Play 5 Choruses

LOVER ³/₄

BY LORENZ HART & RICHARD RODGERS

(DRUM INTRO)

8



C $\frac{F\#-}{B}$ $\frac{F-}{Bb}$ $\frac{E-}{A}$

$\frac{E^b-}{Ab}$ $\frac{D-}{G}$ G7 E- A7 D-

G7 2. C $F\#^{\flat}$ B7 E F \circ 7 $F\#-$ B7

E F \circ 7 $F\#-$ B7 G G \circ 7 A-

D7 E- A7 $^{\flat}9$ D- G7 C

$\frac{F\#-}{B}$ $\frac{F-}{Bb}$ $\frac{E-}{A}$ $\frac{E^b-}{Ab}$

D- G7 C A- D- G7

SOLO C $F\#/\flat$ $F-\flat$ E/A E^b/\flat D/G G7

1. E- A7 D- G7 2. C $F\#^{\flat}$ B7 E F \circ 7 $F\#-$ B7 E F \circ 7

$F\#-$ B7 G G \circ 7 A- D7 E- A7 $^{\flat}9$ D- G7 C $F\#/\flat$

$F-\flat$ E/A E^b/\flat D- G7 C A- D- G7

\oplus C B \flat 7

REPEAT AND FADE FOR ENDING

Copyright ©1932 and 1933 by Famous Music Corporation
 Copyright renewed 1959 and 1960 by Famous Music Corporation Used by Permission
 The use of the lyrics of this song with any other music is expressly prohibited.

OUT OF NOWHERE



Play 5 Choruses

BY EDWARD HEYMAN & JOHNNY GREEN

G B^b- E^b7 B^b- E^b7 C

B- E7 B- E7 1. A- B^o E7 +9 A-

E^b7 A- D7 (+9) 2. A- B^o E7+9

A- F7+4 B- B^o7 A- D7 G A- D7

SOLO

G B^b- E^b7 B^b- E^b7 G B- E7 B- E7

1. A- B^o E7+9 A- E^b7 A- D7 (D7+9)

2. A- B^o E7+9 A- F7+4 B- B^o7 A- D7 G A- D7

G E7+9 A7 D7+9 G E7+9 A7 D7+9 G7 E7+9 A7 D7+9 G7

PLAY 13X'S THEN GO TO G7 HOLD

Copyright ©1931 by Famous Music Corporation
 Copyright renewed 1958 by Famous Music Corporation Used by Permission
 The use of the lyrics of this song with any other music is expressly prohibited.



TANGERINE

Play 7 Choruses

BY JOHNNY MERCER & VICTOR SCHERTZINGER

G- C7 F B^b A- D7^b9 G- C7 G- C7

F A^o D7+9 G- C7 F B^o E7+9

A B- E7 A7 D7^b9 G- C7

F B^b A- D7^b9 G- C7 G- C7 E^b7 D7+9 G- $\overbrace{\quad\quad\quad}^3$

E^o A7+9 D- $\overbrace{\quad\quad\quad}^3$ G7 G- C7 F D7+9

SOLO

G- C7 F B^b A- D7^b9 G- C7 F A^o D7+9

G- C7 F B^o E7+9 A B- E7 A7 D7^b9

G- C7 F B^b A- D7^b9 G- C7 E^b7 D7+9

G- E^o A7+9 D- G7 G- C7 \oplus F D7+9

\oplus A- D7 G- C7 E^b7 E^o

Copyright ©1942 by Famous Music Corporation
 Copyright renewed 1969 by Famous Music Corporation. Used by Permission
 The use of the lyrics of this song with any other music is expressly prohibited.

I REMEMBER YOU



BY JOHNNY MERCER & VICTOR SCHERTZINGER

Play 4 Choruses

F B- E7 F C- F7 B^b

B^b- E^b7 A- D7 G- C7 F B- E7 F

C- F7 B^b B^b- E^b7 F C- F7

B^b E- A7 D E- A7 D

D- G7 C G- C7 F B- E7 F

A^o D7^b9 G- B^b- E^b7 F G7+4 A- D-

G- C7 F D- G- C7

⊕ C- F- B^b- E^b7 A- D- G- C7 F^o+4

SOLO

PLAY CODA ON LAST CHORUS ONLY

F B- E7 F C- F7 B^b B^b- E^b7 A- D7 G- C7

F B- E7 F C- F7 B^b B^b- E^b7 F C- F7 B^b E- A7

D E- A7 D D- G7 C G- C7 F B- E7 F A^o D7^b9 G- B^b- E^b7

F G7+4 A-D- G- C7 ⊕ F D- G- C7

Copyright ©1942 by Famous Music Corporation
 Copyright renewed 1969 by Famous Music Corporation Used by Permission
 The use of the lyrics of this song with any other music is expressly prohibited.



LOVER 4/4

Play 4 Choruses

BY LORENZ HART & RICHARD RODGERS

C F#- B7 F- B^b7 E- A7

E^b- A^b7 D- G7

1. E- A7 D- G7

2. C F#⁶ B7⁺⁹ E F^o7 F#- B7

E F^o7 F#- B7 G G#^o7 A- D7

E- A7^b9 D- G7 C F#- B7

F- B^b7 E- A7 E^b- A^b7 D- G7

C A- D- G7

SOLO

C F#- B7 F- B^b7 E- A7 E^b- A^b7 D- G7

1. E- A7 D- G7 2. C F#⁶ B7⁺⁹ E F^o7 F#- B7 E F^o7

F#- B7 G G#^o7 A- D7 E- A7^b9 D- G7 C F#-

B7 F- B^b7 E- A7 E^b- A^b7 D- G7 C A- D- G7

C7 F7 B^b7 E^b7 A^b7 D^b7 C⁴