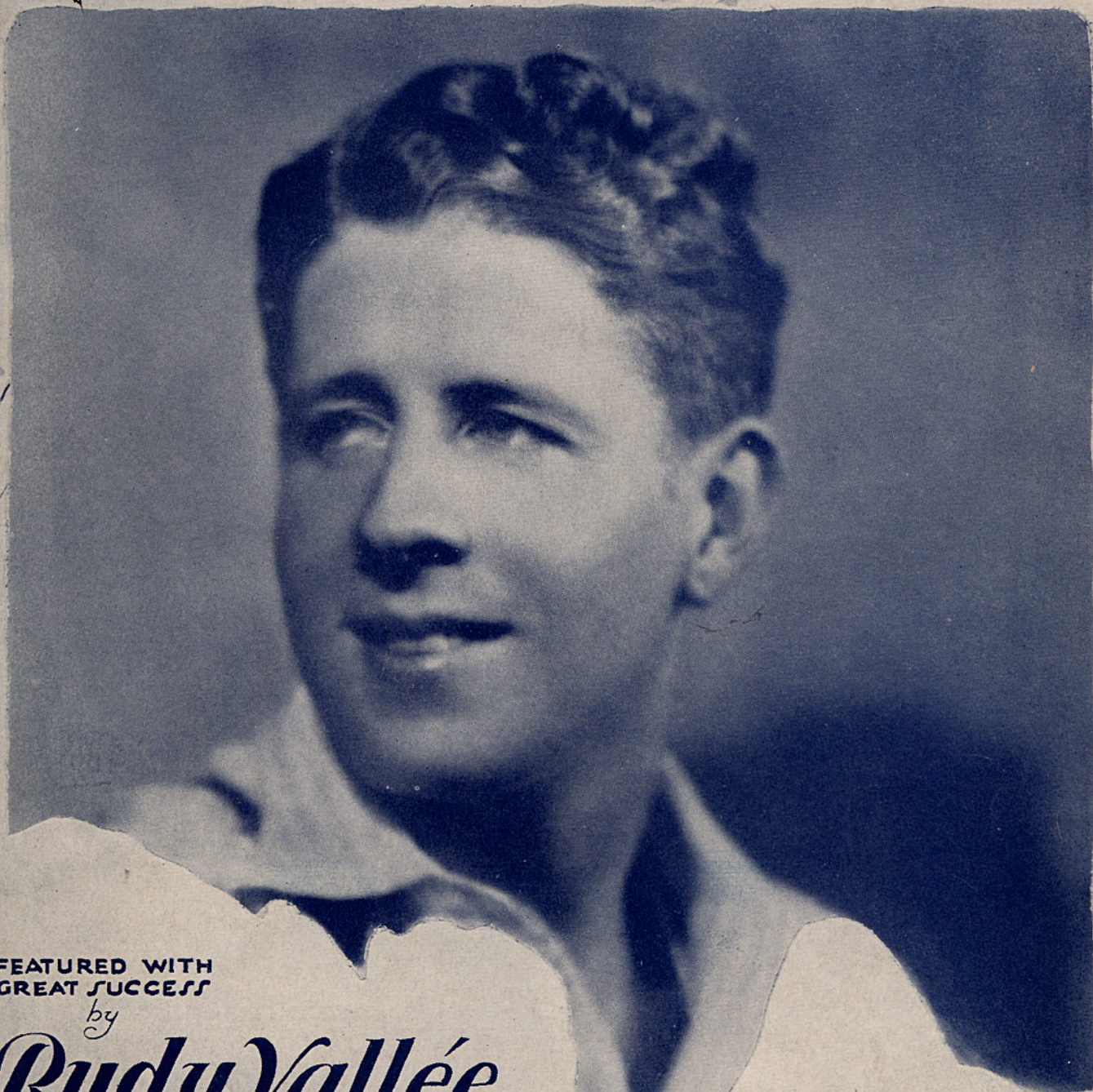


W.C. Handy's

# SAINT LOUIS BLUES

R.M.

40



FEATURED WITH GREAT SUCCESS

by

## Rudy Vallée

(And His Connecticut Yankees)

On VICTOR RECORD #22321-B

Five other Famous Blues by  
**W.C. HANDY** (Originator of the Blues)

- "AUNT HAGAR'S BLUES"
- "HARLEM BLUES"
- "MEMPHIS BLUES"
- "LOVELESS LOVE BLUES"
- "HESITATING BLUES"

ASHLEY MUSIC SUPPLY CO., INC  
1600 Broadway, New York City  
Exclusive Selling Agents, For  
ST. LOUIS BLUES VOCAL COPIES

HANDY BROS. MUSIC CO., INC.  
'Home of the Blues'  
1545 BROADWAY, NEW YORK

Barbelle  
MADE  
U.S.A.

# St. Louis Blues

Ukulele in D Tuning

Words and Music by  
W. C. HANDY

Piano

The first system of piano accompaniment consists of two staves. The right staff is in treble clef with a key signature of one sharp (F#) and a common time signature (C). It features a melodic line with eighth and sixteenth notes, and several chords. The left staff is in bass clef with the same key signature and time signature, providing a bass line with eighth and sixteenth notes and chords.

The second system of piano accompaniment continues the two-staff format. The right staff has a melodic line with various rhythmic patterns and chords. The left staff provides a supporting bass line with chords and moving lines.

The third system features a vocal line on a single staff with lyrics underneath. Above the staff are four guitar chord diagrams. The piano accompaniment continues in two staves below the vocal line.

I hate to see— de ev'nin' sun go down—  
 Been to de Gypsy to get ma for - tune tole—  
 You ought to see— dat stovepipe brown of mine—

The fourth system of piano accompaniment continues the two-staff format, providing accompaniment for the second vocal line.

The fifth system features a vocal line on a single staff with lyrics underneath. Above the staff are four guitar chord diagrams. The piano accompaniment continues in two staves below the vocal line.

Hate to see— de eve-nin' sun go down.  
 To de Gypsy done got ma for - tune tole.  
 Lak he owns de Di-mon Jos - eph line.

The sixth system of piano accompaniment concludes the piece with two staves of music.

Cause my ba-by, — he done lef dis town —  
 Cause I'm most wile- 'bout ma Jel - ly Roll —  
 He'd make a cross - eyed o' man go stone blind —

Feel-in' to-mor - row lak — Ah feel to - day —  
 Gyp-sy done tole — me, "don't — you wear no black" —  
 Black-er than mid - night, teeth — lak flags of truce —

Feel to-mor - row lak — Ah feel to - day —  
 Yes she done tole me "don't — you wear no black" —  
 Black - est man in — de whole St. Louis —

I'll pack my trunk — Make ma get a - way — St. Lou - is  
 Go to St. Louis — You can win him back — Help me to  
 Black-er de ber-ry — Sweet-er is the juice — A-bout a

wo - man — Wid her dia - mon' rings — Pulls dat  
 Cai - ro — make St. Louis by ma - self — Git to  
 crap game — he knows a pow'ful lot — But when

man roun' — by her a - pron strings — 'Twant for  
 Cai - ro — find ma ole friend Jeff, — Gwine to  
 work-time comes he's on de dot — Gwine to

pow-der — an' for store bought hair — De  
 pin - ma self close to — his side — If ah  
 ask him — for a cold - ten spot — What it

man I love — would not gone no - where.  
 flag his train - I sho' can ride.  
 takes to git it - he's cer - th - ly got.

Chorus

6 G0 G0 G0 G0 G0 G0 G0 5

Got de St. Lou - is Blues jes as blue as Ah - can be  
 I - loves dat man lak a school boy - loves his pie  
 A - black head - ed gal make a freight train - jump - the track  
 Lawd a blonde head - ed wom - an makes a good - man - leave the town  
 Oh ash - es to ash - es and dust to dust

Dat man got a heart lak a rook cast in the  
 Lak a Ken - tuck - y Col' - nel - loves his mint an'  
 Said a black head - ed gal make a freight train jump the  
 I said blonde head - ed wom - an makes a goodman leave the  
 I said ash - es to ash - es and dust to

sea Or - else he wouldn't have gone - so far - from  
 rye I'll - love ma ba - by - till - the day - Ah  
 track But a long tall gal makes a - preach - er - ball the  
 town But a red head wom - an makes a boyslap his - pa - pa  
 dust If my blues don't get you - my - jazz - ing

*Spoken*

me. Dog-gone-it! me.  
 die. die.  
 Jack. Jack.  
 down. down.  
 must. must.

# OUR LATEST SONG "HITS"

Request your favorite RADIO ARTIST or ORCHESTRA LEADER to Render Them...

WHEREVER JAZZ IS PLAYED

**GUITAR SOLOS**  
*Saint Louis Blues* 50¢

*Beale Street Blues*...

*Yellow Dog Blues*...

*Loveless Love*.....

Price 40 cents

**Saxophone Solos**

*Saint Louis Blues*

*Beale Street Blues*

*Yellow Dog Blues*

*Hesitating Blues*

= Price 50 cents

**50 STYLES OF PLAYING**

**W.C. HANDY'S SAINT LOUIS BLUES**

**JAZZ BREAKS for the PIANO**

Arranged by

J. LAWRENCE COOK

and EARL L. SPARKS

Price 60¢

**BANJO SOLOS**

*Saint Louis Blues*

*Beale Street Blues*

*Yellow Dog Blues*

*Hesitating Blues*

Price 60 cents.

**PIANO SOLOS**

Arranged by

J. LAWRENCE COOK

*Saint Louis Blues*

(Concert Jazz Arr.)

*Beale Street Blues*

(Concert Jazz Arr.)

Price 75 cents

## Got A Need For You

From The Cotton Club Parade

Words and Music by JEANNE BURNS

Chorus Sent you far - a - way from me - Thought you'd stay a - way

## Harlem

Words by ARTHUR PORTER

(Harlem's Heaven To Me)

Music by EDGAR DOWELL

Chorus Har - lem, — Har - lem, — Har - lem, — Har - lem, — with it's

## A LITTLE LIKE YOU

(AND A LITTLE LIKE ME)

by Maceo Pinkard

CHORUS Would you be in para-dise, with a baby on your knee If it

## A Song

(How The First Song Was Born)

ALEXANDER HILL

He took the mur-mur of the riv-er as it flowed down to the sea And

Lyric by ANDY RAZAF

## Aintcha Got Music?

Music by JAMES P. JOHNSON

(A RHYTHMIC SPIRITUAL)

Spite of your trou - bles, Spite of your wor - ries, Spite of your Aint - cha got mu - sic, Aint - cha got laugh - ter, Aint - cha got

## Loveless Love

A Blues Novelty

W. C. HANDY

1st Chorus Love, oh love, oh love - less love Has set our

Order from Your LOCAL MUSIC DEALER OR Direct from us. 35¢ Per copy

**HANDY BROTHERS MUSIC CO. INC.**  
The Home of the Blues  
1587 BROADWAY, NEW YORK, N.Y.

Recorded on all Phonograph Records