

# C

**C**  
(C major)

BASS NOTES -fundamental C /alternate G

**C dim or C<sup>o</sup>**  
(C diminished)

BASS NOTES -fundamental C /alternate G<sup>b</sup>

**C<sup>6</sup>**  
(C sixth)

BASS NOTES -fundamental C /alternate G

**C<sup>7</sup>**  
(C seventh)

BASS NOTES -fundamental C /alternate G

**C<sup>M7</sup>**  
(C major seventh)

BASS NOTES -fundamental C /alternate G

**C<sup>7b5</sup> or C<sup>7(-5)</sup>**  
(C seventh with flatted fifth)

BASS NOTES -fundamental C /alternate G<sup>b</sup>

# POPULAR CHORD DICTIONARY for PIANO

This Chord Dictionary shows the Notation, Fingering and Keyboard Diagrams for all of the Important Chords Used in Modern Popular Music.

by Palmer-Hughes



ALFRED PUBLISHING CO., INC.

# How to use this BOOK....

This *CHORD DICTIONARY* shows the notation, fingering and keyboard diagrams for all of the important chords used in modern popular music. In order to make this dictionary useful to the amateur pianist, only the most practical position of each chord is shown. Although chord accompaniments are sometimes played with the right hand, only the left hand chord positions and fingering are shown in the dictionary section of this book. In the *POPULAR PROGRESSIONS* section of this book both left and right hand chord positions are shown. The chords are first classified according to *KEY* in alphabetical order. Flat or sharp families will be found *FOLLOWING* the letter name they contain. Thus the key families of the chords will be found in the following order:

**A A<sup>b</sup> B B<sup>b</sup> C C<sup>#</sup> D D<sup>b</sup> E E<sup>b</sup> F F<sup>#</sup> G G<sup>b</sup>**

This system is used rather than chromatic order, as it is more consistent with proper alphabetizing. Under each key family, the chords are arranged in the following order:

## **MAJOR, MINOR, DIMINISHED, AUGMENTED**

### **SIXTH CHORDS**

### **SEVENTH CHORDS**

*(whose names contain no numbers larger than 7)*

### **NINTH CHORDS**

*(all chords containing the number 9 in the chord name)*

### **ELEVENTH CHORDS**

### **THIRTEENTH CHORDS**

The *DOMINANT SEVENTH CHORD*, which is simply termed a "7th chord" in popular music, is given in two forms; the complete chord and the three-note form. The three-note dominant seventh with the fifth omitted often sounds better than the full chord. It is easier to play, and frequently makes a more pleasing progression to the following chord.

*TWO BASS NOTES* are given for each chord. These are used as Bass Notes for the accompanying chord. The Fundamental, or root bass note, is given first, and is the one most frequently used with the chord. The second bass note that is given is called the Alternate bass note. It is particularly useful in playing rhythmic accompaniments, in which the little finger plays the fundamental bass note first, followed by one or more of the chords, then the alternate bass note, followed by one or more chords.

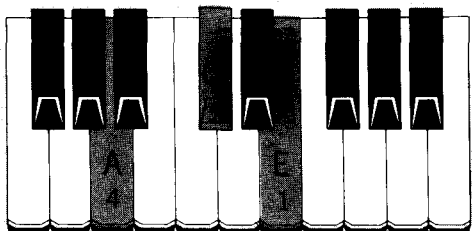
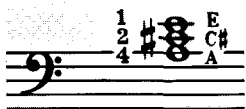
*FINGERING* indicated for each chord may be regarded as a Basic Fingering. Whatever is most comfortable for the individual hand is usually best. Fingerings may be altered for certain chord progressions. It is very common to substitute the 4th finger for the 5th finger.

Those who wish to learn the rules for the formation of the chords contained in this book, and the reasons for the selection of the particular positions of each chord given, will find valuable information on pages 30-33.

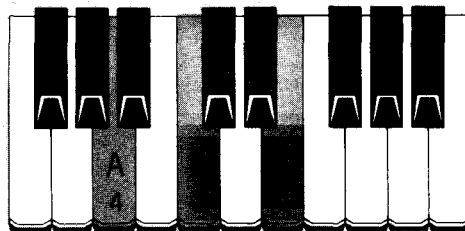
**IMPORTANT!** Double sharps ( **𝄌** ) and double flats ( **𝄍** ) are used in this book only where it is impractical to spell the chords with simpler enharmonic notation.  
(A double sharp raises a note two half-steps. A double flat lowers a note two half-steps.)

## A

(A major)



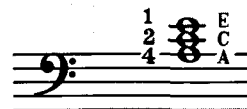
**BASS NOTES** -fundamental A /alternate E



**BASS NOTES** -fundamental A /alternate E

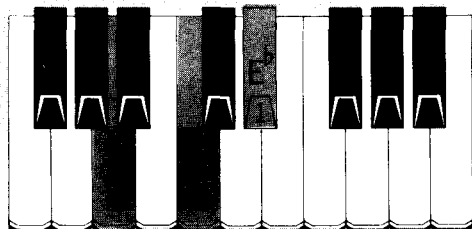
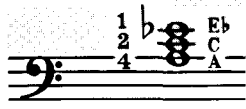
## A<sub>m</sub>

(A minor)

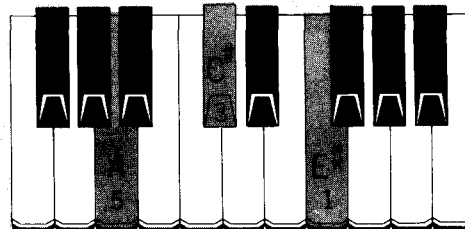


## A<sup>dim</sup> or A<sup>o</sup>

(A diminished)

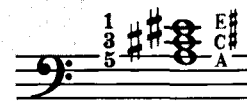


**BASS NOTES** -fundamental A /alternate E<sup>b</sup>



## A<sup>aug</sup> or A<sup>+</sup>

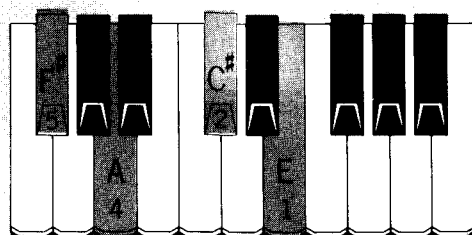
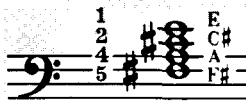
(A augmented)



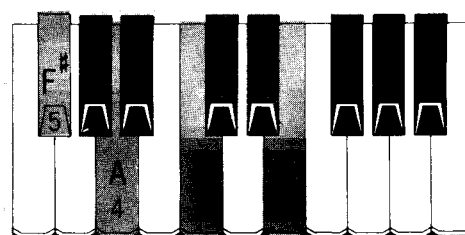
**BASS NOTES** -fundamental A /alternate E<sup>#</sup>(F)

## A<sup>6</sup>

(A sixth)

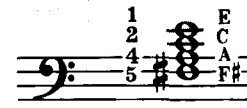


**BASS NOTES** -fundamental A /alternate E



## A<sub>m</sub><sup>6</sup>

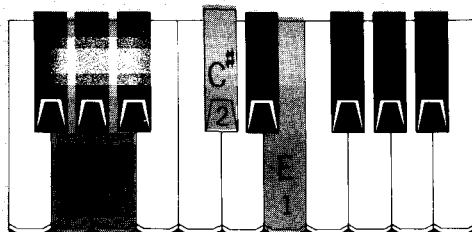
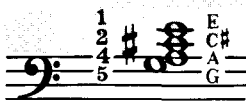
(A minor sixth)



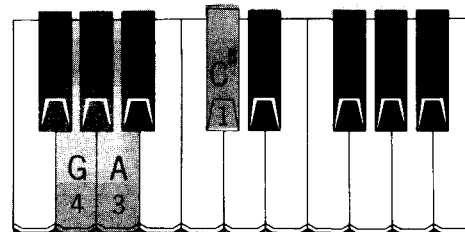
**BASS NOTES** -fundamental A /alternate E

## A<sup>7</sup>

(A seventh)

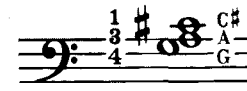


**BASS NOTES** -fundamental A /alternate E



## A<sup>7</sup>

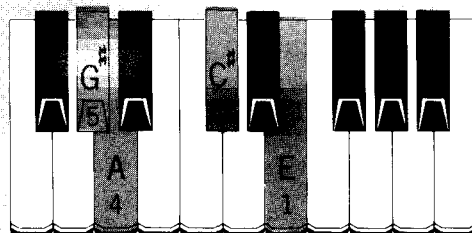
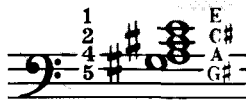
(A seventh) three note version with fifth omitted



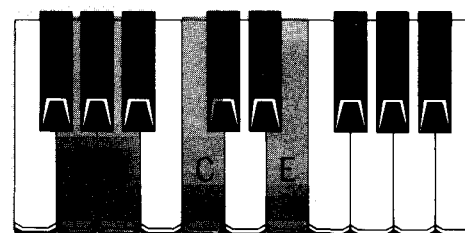
**BASS NOTES** -fundamental A /alternate E

## A<sub>M</sub><sup>7</sup>

(A major seventh)

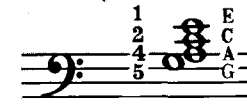


**BASS NOTES** -fundamental A /alternate E



## A<sub>m</sub><sup>7</sup>

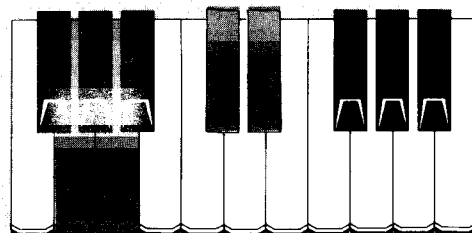
(A minor seventh)



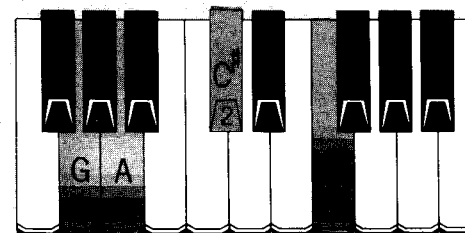
**BASS NOTES** -fundamental A /alternate E

## A<sup>7♭5</sup> or A<sup>7(-5)</sup>

(A seventh with flatted fifth)



**BASS NOTES** -fundamental A /alternate E<sup>b</sup>



## A<sup>7♯5</sup> or A<sup>7(+5)</sup>

(A seventh with raised fifth)

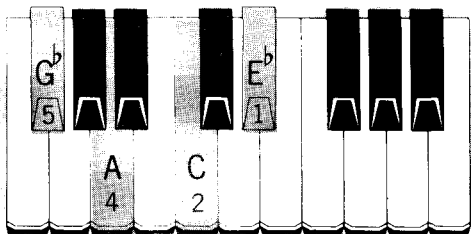
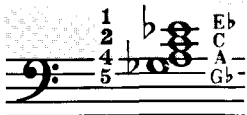


**BASS NOTES** -fundamental A /alternate E<sup>#</sup>(F)

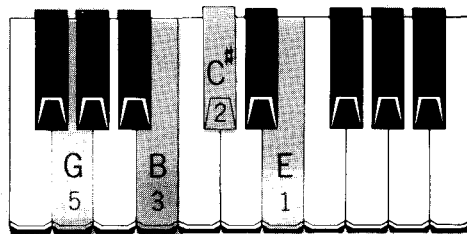
# A

## A<sup>dim</sup> 7 or A<sup>o</sup>7

(A diminished seventh)



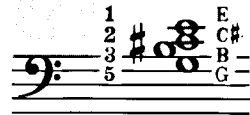
**BASS NOTES** -fundamental A /alternate E<sup>b</sup>



**BASS NOTES** -fundamental A /alternate E

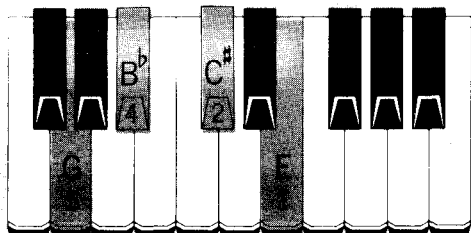
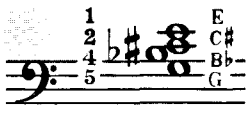
## A<sup>9</sup>

(A ninth)

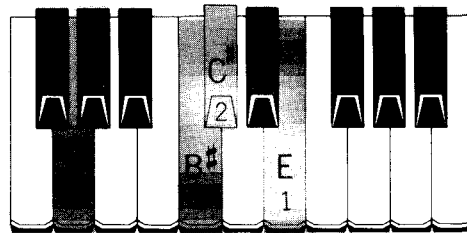


## A<sup>7b9</sup> or A<sup>7(-9)</sup>

(A seventh plus flatted ninth)



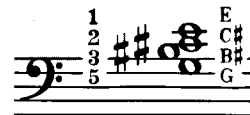
**BASS NOTES** -fundamental A /alternate E



**BASS NOTES** -fundamental A /alternate E

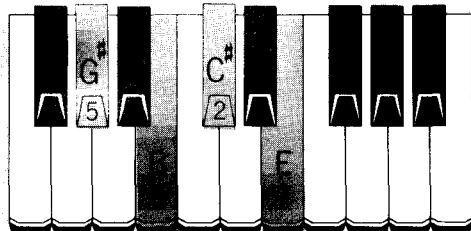
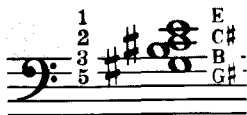
## A<sup>7#9</sup> or A<sup>7(+9)</sup>

(A seventh plus raised ninth)

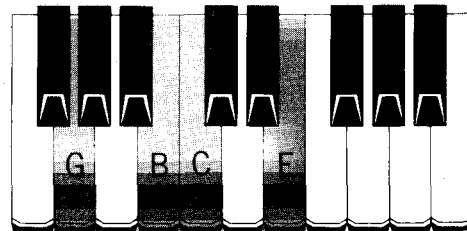


## A<sup>M</sup> 7 add<sup>9</sup>

(A major seventh with added ninth)



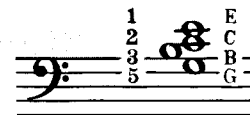
**BASS NOTES** -fundamental A /alternate E



**BASS NOTES** -fundamental A /alternate E

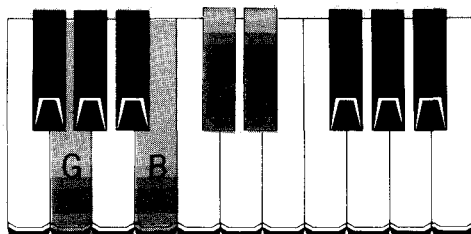
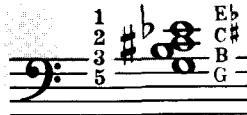
## A<sup>m</sup> 7 add<sup>9</sup>

(A minor seventh with added ninth)

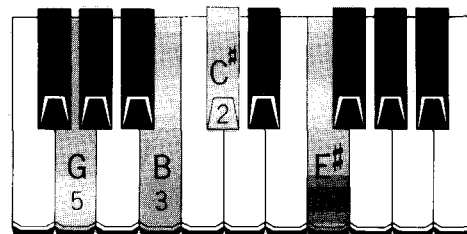


## A<sup>9b5</sup> or A<sup>9(-5)</sup>

(A ninth with flatted fifth)



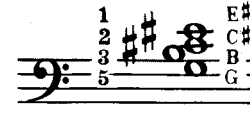
**BASS NOTES** -fundamental A /alternate E<sup>b</sup>



**BASS NOTES** -fundamental A /alternate E<sup>#</sup>(F)

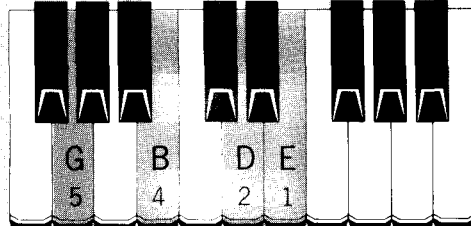
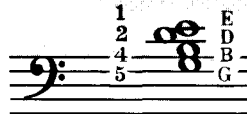
## A<sup>9#5</sup> or A<sup>9(+5)</sup>

(A ninth with raised fifth)

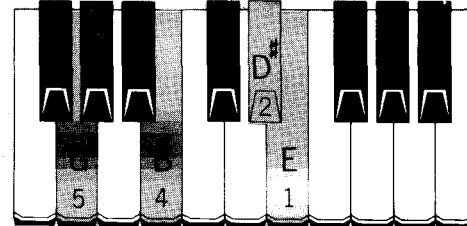


## A<sup>11</sup>

(A eleventh)



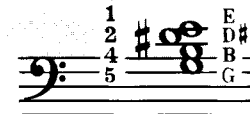
**BASS NOTES** -fundamental A /alternate E



**BASS NOTES** -fundamental A /alternate E

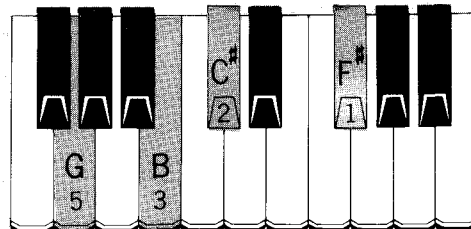
## A<sup>aug</sup> 11

(A augmented eleventh)

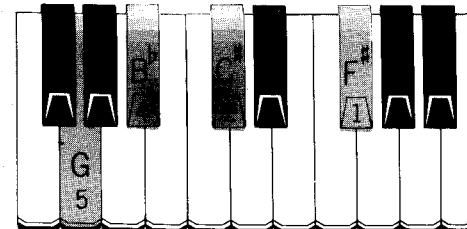


## A<sup>13</sup>

(A thirteenth)



**BASS NOTES** -fundamental A /alternate E



**BASS NOTES** -fundamental A /alternate E

## A<sup>13b9</sup> or A<sup>13(-9)</sup>

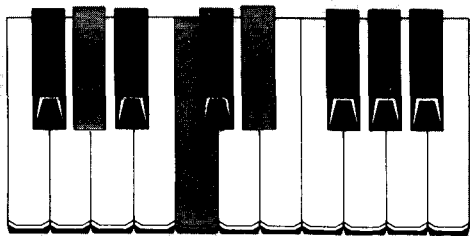
(A thirteenth with flatted ninth)



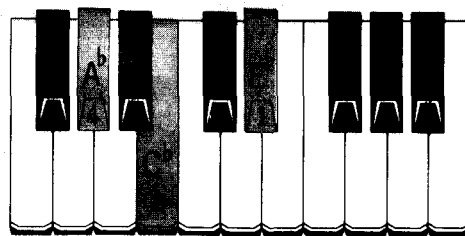
# A<sup>b</sup>

**A<sup>b</sup>**  
(A<sup>b</sup> major)

1 2 4  
b Eb C Ab



**BASS NOTES** -fundamental A<sup>b</sup> /alternate E<sup>b</sup>



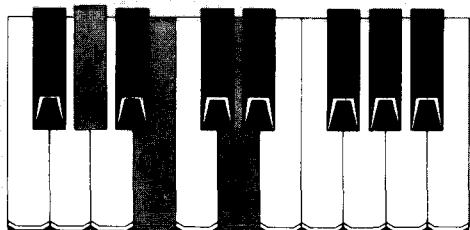
**A<sup>b</sup> m**  
(A<sup>b</sup> minor)

1 2 4  
b Eb Cb Ab

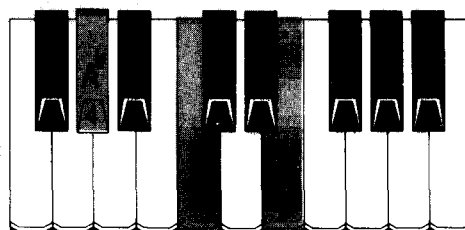
**BASS NOTES** -fundamental A<sup>b</sup> /alternate E<sup>b</sup>

**A<sup>b</sup> dim or A<sup>b</sup> 0**  
(A<sup>b</sup> diminished)

1 2 4  
b D Cb Ab



**BASS NOTES** -fundamental A<sup>b</sup> /alternate D



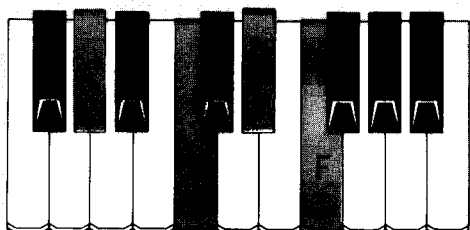
**A<sup>b</sup> aug or A<sup>b</sup> +**  
(A<sup>b</sup> augmented)

1 2 4  
E C Ab

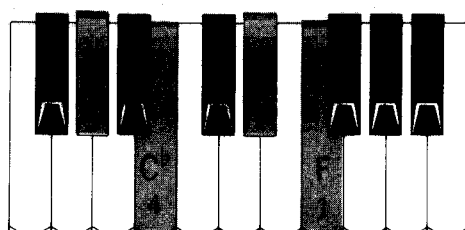
**BASS NOTES** -fundamental A<sup>b</sup> /alternate E

**A<sup>b</sup> 6**  
(A<sup>b</sup> sixth)

1 2 3 5  
F Eb C Ab



**BASS NOTES** -fundamental A<sup>b</sup> /alternate E<sup>b</sup>



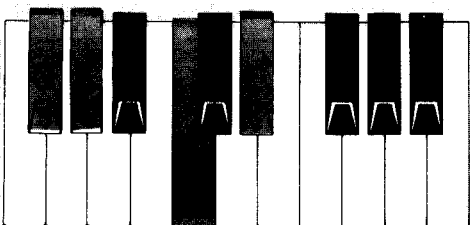
**A<sup>b</sup> m 6**  
(A<sup>b</sup> minor sixth)

1 2 3 5  
F Eb Cb Ab

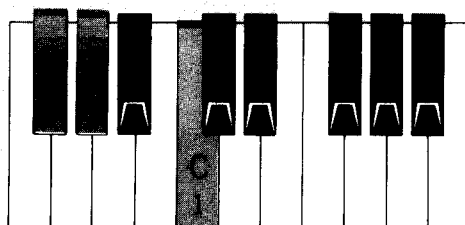
**BASS NOTES** -fundamental A<sup>b</sup> /alternate E<sup>b</sup>

**A<sup>b</sup> 7**  
(A<sup>b</sup> seventh)

1 2 4 5  
Eb C Ab Gb



**BASS NOTES** -fundamental A<sup>b</sup> /alternate E<sup>b</sup>



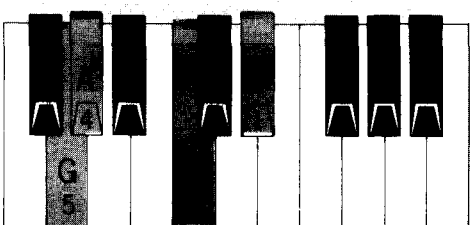
**A<sup>b</sup> 7**  
(A<sup>b</sup> seventh) three note version with fifth omitted

1 3 4  
C Ab Gb

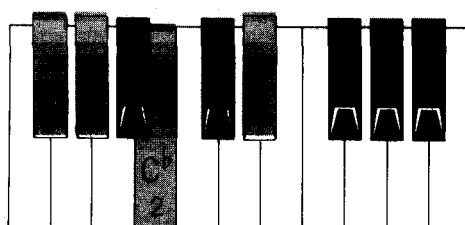
**BASS NOTES** -fundamental A<sup>b</sup> /alternate E<sup>b</sup>

**A<sup>b</sup> M 7**  
(A<sup>b</sup> major seventh)

1 2 4 5  
Eb C Ab G



**BASS NOTES** -fundamental A<sup>b</sup> /alternate E<sup>b</sup>



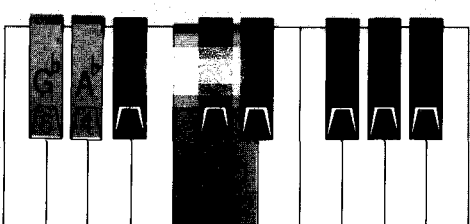
**A<sup>b</sup> m 7**  
(A<sup>b</sup> minor seventh)

1 2 4 5  
Eb Cb Ab Gb

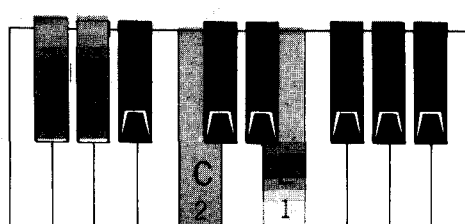
**BASS NOTES** -fundamental A<sup>b</sup> /alternate E<sup>b</sup>

**A<sup>b</sup> 7<sup>b</sup>5 or A<sup>b</sup> 7(-5)**  
(A<sup>b</sup> seventh with flatted fifth)

1 2 4 5  
D C Ab Gb



**BASS NOTES** -fundamental A<sup>b</sup> /alternate D



**A<sup>b</sup> 7<sup>#</sup>5 or A<sup>b</sup> 7(+5)**  
(A<sup>b</sup> seventh with raised fifth)

1 2 4 5  
E C Ab Gb

**BASS NOTES** -fundamental A<sup>b</sup> /alternate E

# A<sup>b</sup>

**A<sup>b</sup> dim<sup>7</sup> or A<sup>b</sup> o<sup>7</sup>**  
(A<sup>b</sup> diminished seventh)

1 2 3 4 5  
F D C<sup>b</sup> A<sup>b</sup>

3 2 1

**BASS NOTES** -fundamental A<sup>b</sup> /alternate D

5 3 1 2

**BASS NOTES** -fundamental A<sup>b</sup> /alternate E<sup>b</sup>

**A<sup>b</sup> 9**  
(A<sup>b</sup> ninth)

1 2 3 4 5  
E<sup>b</sup> C B<sup>b</sup> G<sup>b</sup>

**A<sup>b</sup> 7<sup>b</sup>9 or A<sup>b</sup> 7(-9)**  
(A<sup>b</sup> seventh plus flatted ninth)

1 2 3 4 5  
E<sup>b</sup> C A G<sup>b</sup>

5 1 3 2

**BASS NOTES** -fundamental A<sup>b</sup> /alternate E<sup>b</sup>

5 3 1 2

**BASS NOTES** -fundamental A<sup>b</sup> /alternate E<sup>b</sup>

**A<sup>b</sup> 7<sup>#</sup>9 or A<sup>b</sup> 7(+9)**  
(A<sup>b</sup> seventh plus raised ninth)

1 2 3 4 5  
E<sup>b</sup> C B<sup>b</sup> G<sup>b</sup>

**A<sup>b</sup> M<sup>7</sup> add<sup>9</sup>**  
(A<sup>b</sup> major seventh with added ninth)

1 2 3 4 5  
E<sup>b</sup> C B<sup>b</sup> G

5 3 1 2

**BASS NOTES** -fundamental A<sup>b</sup> /alternate E<sup>b</sup>

5 3 1 2

**BASS NOTES** -fundamental A<sup>b</sup> /alternate E<sup>b</sup>

**A<sup>b</sup> m<sup>7</sup> add<sup>9</sup>**  
(A<sup>b</sup> minor seventh with added ninth)

1 2 3 4 5  
E<sup>b</sup> C B<sup>b</sup> G<sup>b</sup>

**A<sup>b</sup> 9<sup>b</sup>5 or A<sup>b</sup> 9(-5)**  
(A<sup>b</sup> ninth with flatted fifth)

1 2 3 4 5  
D C B<sup>b</sup> G<sup>b</sup>

5 3 2 1

**BASS NOTES** -fundamental A<sup>b</sup> /alternate D

5 3 2 1

**BASS NOTES** -fundamental A<sup>b</sup> /alternate E

**A<sup>b</sup> 9<sup>#</sup>5 or A<sup>b</sup> 9(+5)**  
(A<sup>b</sup> ninth with raised fifth)

1 2 3 4 5  
F C B<sup>b</sup> G<sup>b</sup>

**A<sup>b</sup> 11**  
(A<sup>b</sup> eleventh)

1 2 3 4 5  
E<sup>b</sup> D<sup>b</sup> B<sup>b</sup> G<sup>b</sup>

5 3 2 1

**BASS NOTES** -fundamental A<sup>b</sup> /alternate E<sup>b</sup>

5 4 1 2

**BASS NOTES** -fundamental A<sup>b</sup> /alternate E<sup>b</sup>

**A<sup>b</sup> aug<sup>11</sup>**  
(A<sup>b</sup> augmented eleventh)

1 2 3 4 5  
E<sup>b</sup> D<sup>b</sup> B<sup>b</sup> G<sup>b</sup>

**A<sup>b</sup> 13**  
(A<sup>b</sup> thirteenth)

1 2 3 4 5  
F C B<sup>b</sup> G<sup>b</sup>

5 4 3 1

**BASS NOTES** -fundamental A<sup>b</sup> /alternate E<sup>b</sup>

5 4 3 1

**BASS NOTES** -fundamental A<sup>b</sup> /alternate E<sup>b</sup>

**A<sup>b</sup> 13<sup>b</sup>9 or A<sup>b</sup> 13(-9)**  
(A<sup>b</sup> thirteenth with flatted ninth)

1 2 3 4 5  
F C A G<sup>b</sup>

**B**  
(B major)

BASS NOTES -fundamental B /alternate F#

**B<sup>o</sup>**  
(B minor)

BASS NOTES -fundamental B /alternate F#

**B<sup>dim</sup> or B<sup>o</sup>**  
(B diminished)

BASS NOTES -fundamental B /alternate F

**B<sup>aug</sup> or B<sup>+</sup>**  
(B augmented)

BASS NOTES -fundamental B /alternate G

**B<sup>6</sup>**  
(B sixth)

BASS NOTES -fundamental B /alternate F#

**B<sup>m</sup>**  
(B minor six)

BASS NOTES -fundamental B /alternate F#

**B<sup>7</sup>**  
(B seventh)

BASS NOTES -fundamental B /alternate F#

**B**  
(B seventh) three note version with fifth omitted

BASS NOTES -fundamental B /alternate F#

**B<sup>M</sup><sup>7</sup>**  
(B major seventh)

BASS NOTES -fundamental B /alternate F#

**B<sup>m</sup>**  
(B minor seventh)

BASS NOTES -fundamental B /alternate F#

**B<sup>7b5</sup> or B<sup>7(-5)</sup>**  
(B seventh with flattened fifth)

BASS NOTES -fundamental B /alternate F

**B<sup>7#5</sup> or B<sup>7(+5)</sup>**  
(B seventh with raised fifth)

BASS NOTES -fundamental B /alternate G

## B<sup>7</sup> dim or B<sup>7</sup> o7

(B diminished seventh)

**BASS NOTES** -fundamental B /alternate F

## B<sup>7</sup> b9 or B<sup>7</sup>(-9)

(B seventh plus flatted ninth)

**BASS NOTES** -fundamental B /alternate F<sup>#</sup>

## B<sup>m</sup> add<sup>9</sup>

(B major seventh with added ninth)

**BASS NOTES** -fundamental B /alternate F<sup>#</sup>

## B<sup>9</sup> b5 or B<sup>9</sup>(-5)

(B ninth with flatted fifth)

**BASS NOTES** -fundamental B /alternate F

## B<sup>11</sup>

(B eleventh)

**BASS NOTES** -fundamental B /alternate F<sup>#</sup>

## B<sup>13</sup>

(B thirteenth)

**BASS NOTES** -fundamental B /alternate F<sup>#</sup>

**BASS NOTES** -fundamental B /alternate F<sup>#</sup>

**BASS NOTES** -fundamental B /alternate F<sup>#</sup>

**BASS NOTES** -fundamental B /alternate F<sup>#</sup>

**BASS NOTES** -fundamental B /alternate G

**BASS NOTES** -fundamental B /alternate F<sup>#</sup>

**BASS NOTES** -fundamental B /alternate F<sup>#</sup>

## B<sup>9</sup>

(B ninth)

## B<sup>7</sup>#9 or B<sup>7</sup>(+9)

(B seventh plus raised ninth)

## B<sup>m</sup> add<sup>9</sup>

(B minor seventh with added ninth)

## B<sup>9</sup>#5 or B<sup>9</sup>(+5)

(B ninth with raised fifth)

## B<sup>aug</sup> 11

(B augmented eleventh)

## B<sup>13</sup>b9 or B<sup>13</sup>(-9)

(B thirteenth with flatted ninth)



# B<sup>b</sup>

**B<sup>b</sup>**  
(B<sup>b</sup> major)

1 2 4  
4 b 8 F  
D Bb

B<sup>b</sup> 4  
D 2  
F 1

**BASS NOTES** -fundamental B<sup>b</sup> /alternate F

B<sup>b</sup> 4  
D<sup>b</sup> 2  
F 1

**B<sup>b</sup> m**  
(B<sup>b</sup> minor)

1 2 4  
4 b 8 F  
D<sup>b</sup> B<sup>b</sup>

**BASS NOTES** -fundamental B<sup>b</sup> /alternate F

**B<sup>b</sup> dim or B<sup>b</sup>°**  
(B<sup>b</sup> diminished)

1 2 4  
4 b b 8 F<sup>b</sup>  
D<sup>b</sup> B<sup>b</sup>

B<sup>b</sup> 4  
D<sup>b</sup> 2  
F<sup>b</sup> 1

**BASS NOTES** -fundamental B<sup>b</sup> /alternate F<sup>b</sup>(E)

F<sup>#</sup> 5  
B<sup>b</sup> 3  
D 1

**B<sup>b</sup> aug or B<sup>b</sup>+**  
(B<sup>b</sup> augmented)

1 3 5  
4 b 8 D  
B<sup>b</sup> F<sup>#</sup>

**BASS NOTES** -fundamental B<sup>b</sup> /alternate F<sup>#</sup>

**B<sup>b</sup>6**  
(B<sup>b</sup> sixth)

1 2 4  
4 b 8 F  
D B<sup>b</sup> G

B<sup>b</sup> 4  
D 2  
F 1  
G 5

**BASS NOTES** -fundamental B<sup>b</sup> /alternate F

B<sup>b</sup> 4  
D<sup>b</sup> 2  
F 1  
G 5

**B<sup>b</sup> m<sup>6</sup>**  
(B<sup>b</sup> minor sixth)

1 2 4  
4 b 8 F  
D<sup>b</sup> B<sup>b</sup> G

**BASS NOTES** -fundamental B<sup>b</sup> /alternate F

**B<sup>b</sup>7**  
(B<sup>b</sup> seventh)

1 2 4  
4 b 8 F  
D B<sup>b</sup> A<sup>b</sup>

A<sup>b</sup> 5  
B<sup>b</sup> 4  
D 2  
F 1

**BASS NOTES** -fundamental B<sup>b</sup> /alternate F

A<sup>b</sup> 5  
B<sup>b</sup> 4  
D 1

**B<sup>b</sup>7**  
(B<sup>b</sup> seventh) three note version  
with fifth omitted

1 3 4  
4 b 8 D  
B<sup>b</sup> A<sup>b</sup>

**BASS NOTES** -fundamental B<sup>b</sup> /alternate F

**B<sup>b</sup> M<sup>7</sup>**  
(B<sup>b</sup> major seventh)

1 2 4  
4 b 8 F  
D B<sup>b</sup> A

A 5  
B<sup>b</sup> 4  
D 2  
F 1

**BASS NOTES** -fundamental B<sup>b</sup> /alternate F

A<sup>b</sup> 5  
B<sup>b</sup> 4  
D 2  
F 1

**B<sup>b</sup> m<sup>7</sup>**  
(B<sup>b</sup> minor seventh)

1 3 4  
4 b 8 F  
D<sup>b</sup> B<sup>b</sup> A<sup>b</sup>

**BASS NOTES** -fundamental B<sup>b</sup> /alternate F

**B<sup>b</sup>7<sup>b</sup>5 or B<sup>b</sup>7(-5)**  
(B<sup>b</sup> seventh with flatted fifth)

1 2 4  
4 b b 8 F<sup>b</sup>  
D B<sup>b</sup> A<sup>b</sup>

A<sup>b</sup> 5  
B<sup>b</sup> 4  
D<sup>b</sup> 2  
F<sup>b</sup> 1

**BASS NOTES** -fundamental B<sup>b</sup> /alternate F<sup>b</sup>(E)

E<sup>#</sup> 5  
A<sup>b</sup> 4  
B<sup>b</sup> 3  
D 1

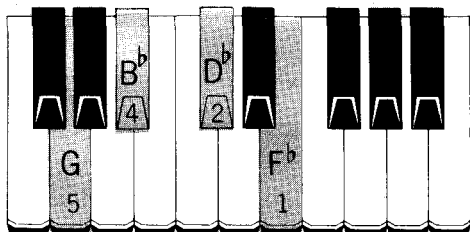
**B<sup>b</sup>7<sup>#</sup>5 or B<sup>b</sup>7(+5)**  
(B<sup>b</sup> seventh with raised fifth)

1 3 4  
4 b 8 D  
B<sup>b</sup> A<sup>b</sup> F<sup>#</sup>

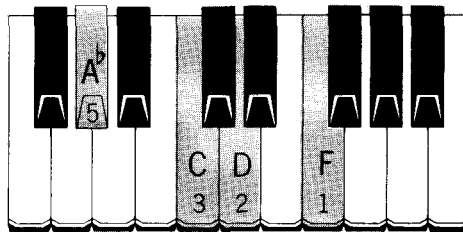
**BASS NOTES** -fundamental B<sup>b</sup> /alternate F<sup>#</sup>

## B<sup>b</sup> dim or B<sup>b</sup>°7

(B<sup>b</sup> diminished seventh)



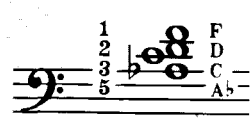
**BASS NOTES** -fundamental B<sup>b</sup> /alternate F<sup>b</sup>(E)



**BASS NOTES** -fundamental B<sup>b</sup> /alternate F

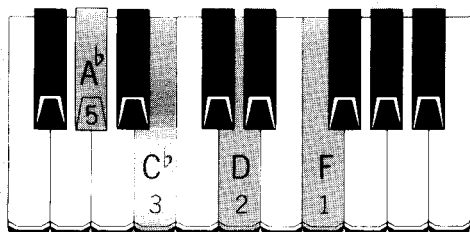
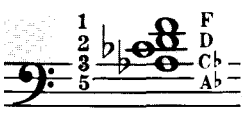
## B<sup>b</sup>9

(B<sup>b</sup> ninth)

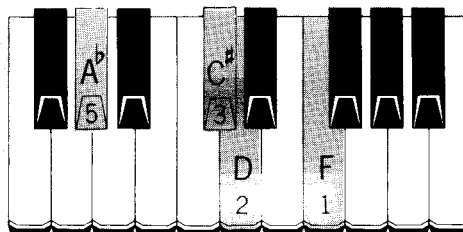


## B<sup>b</sup>7<sup>b</sup>9 or B<sup>b</sup>7(-9)

(B<sup>b</sup> seventh plus flatted ninth)



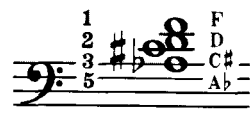
**BASS NOTES** -fundamental B<sup>b</sup> /alternate F



**BASS NOTES** -fundamental B<sup>b</sup> /alternate F

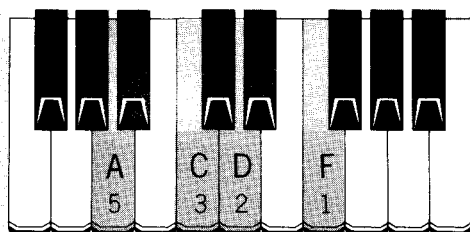
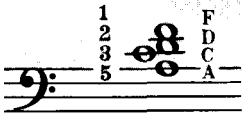
## B<sup>b</sup>7<sup>#</sup>9 or B<sup>b</sup>7(+9)

(B<sup>b</sup> seventh plus raised ninth)

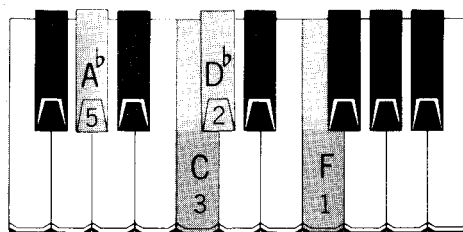


## B<sup>b</sup>M7 add<sup>9</sup>

(B<sup>b</sup> major seventh with added ninth)



**BASS NOTES** -fundamental B<sup>b</sup> /alternate F



**BASS NOTES** -fundamental B<sup>b</sup> /alternate F

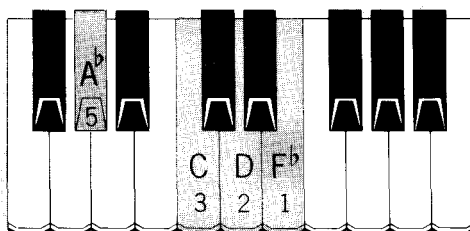
## B<sup>b</sup>m7 add<sup>9</sup>

(B<sup>b</sup> minor seventh with added ninth)

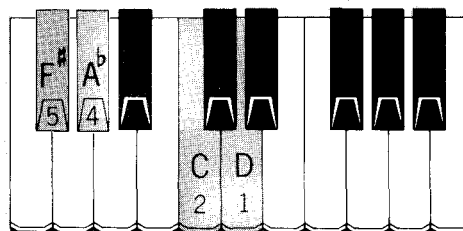


## B<sup>b</sup>9<sup>b</sup>5 or B<sup>b</sup>9(-5)

(B<sup>b</sup> ninth with flatted fifth)



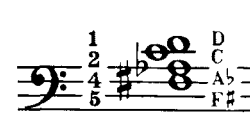
**BASS NOTES** -fundamental B<sup>b</sup> /alternate F<sup>b</sup>(E)



**BASS NOTES** -fundamental B<sup>b</sup> /alternate F<sup>#</sup>

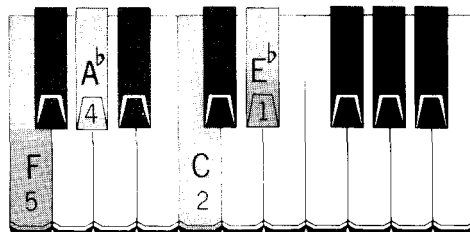
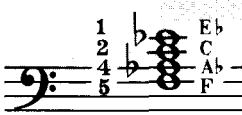
## B<sup>b</sup>9<sup>#</sup>5 or B<sup>b</sup>9(+5)

(B<sup>b</sup> ninth with raised fifth)

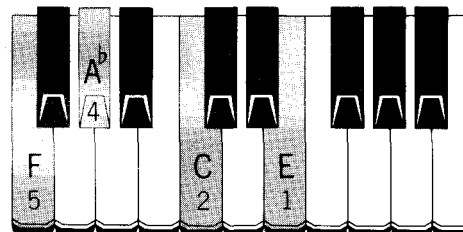


## B<sup>b</sup>11

(B<sup>b</sup> eleventh)



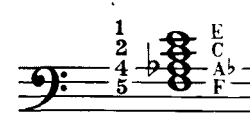
**BASS NOTES** -fundamental B<sup>b</sup> /alternate F



**BASS NOTES** -fundamental B<sup>b</sup> /alternate F

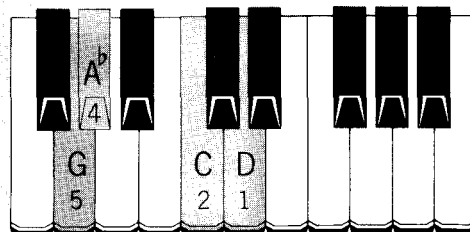
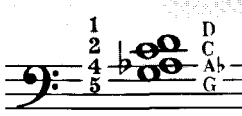
## B<sup>b</sup> aug<sup>11</sup>

(B<sup>b</sup> augmented eleventh)

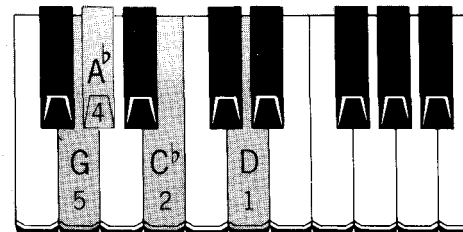


## B<sup>b</sup>13

(B<sup>b</sup> thirteenth)



**BASS NOTES** -fundamental B<sup>b</sup> /alternate F



**BASS NOTES** -fundamental B<sup>b</sup> /alternate F

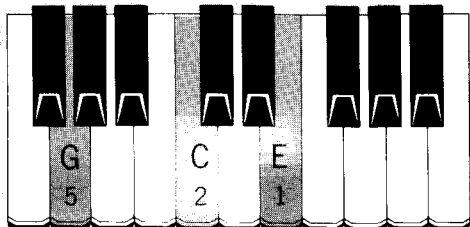
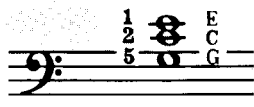
## B<sup>b</sup>13<sup>b</sup>9 or B<sup>b</sup>13(-9)

(B<sup>b</sup> thirteenth with flatted ninth)

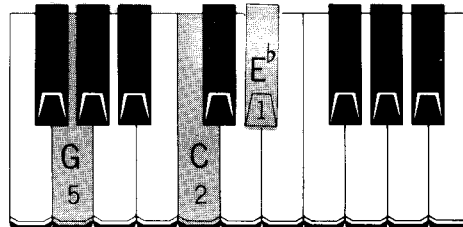


## C

(C major)



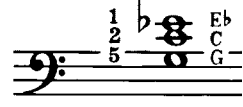
**BASS NOTES** -fundamental C /alternate G



**BASS NOTES** -fundamental C /alternate G

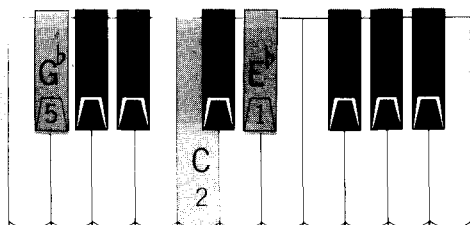
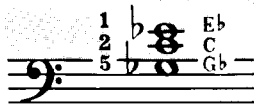
## C m

(C minor)

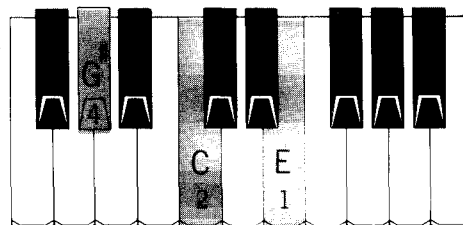


## C dim or C<sup>o</sup>

(C diminished)



**BASS NOTES** -fundamental C /alternate G<sup>b</sup>



**BASS NOTES** -fundamental C /alternate G<sup>#</sup>

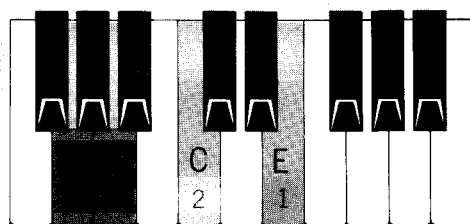
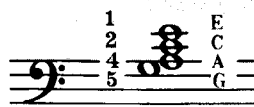
## C aug or C<sup>+</sup>

(C augmented)

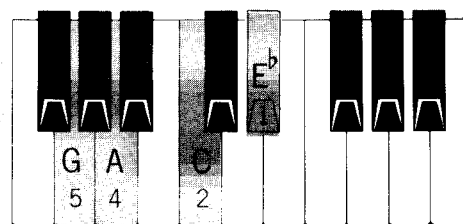


## C<sup>6</sup>

(C sixth)



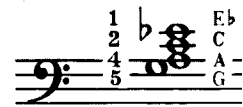
**BASS NOTES** -fundamental C /alternate G



**BASS NOTES** -fundamental C /alternate G

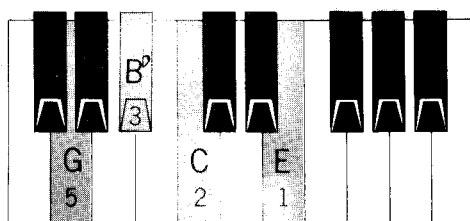
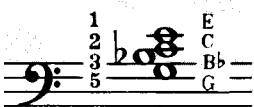
## C m<sup>6</sup>

(C minor sixth)

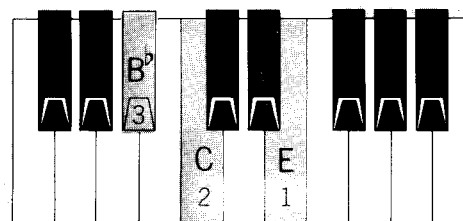


## C<sup>7</sup>

(C seventh)



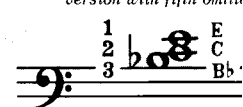
**BASS NOTES** -fundamental C /alternate G



**BASS NOTES** -fundamental C /alternate G

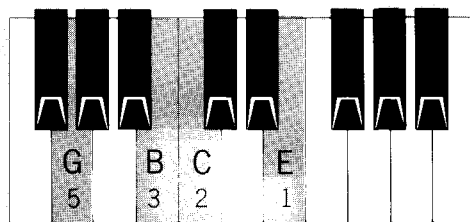
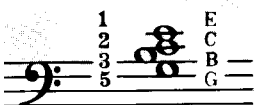
## C

(C seventh) three note version with fifth omitted

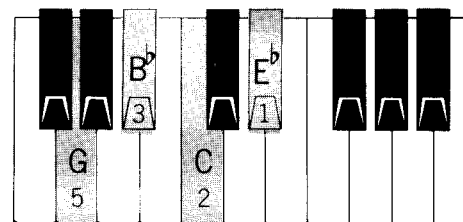


## C M<sup>7</sup>

(C major seventh)



**BASS NOTES** -fundamental C /alternate G



**BASS NOTES** -fundamental C /alternate G

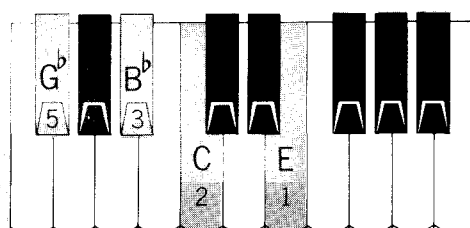
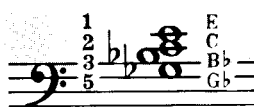
## C m

(C minor seventh)

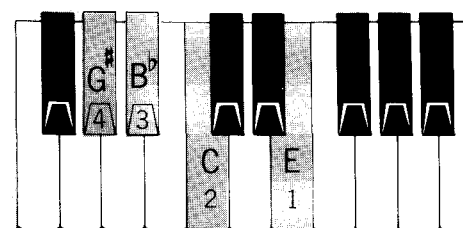


## C<sup>7</sup>b<sup>5</sup> or C<sup>7</sup>(-5)

(C seventh with flattened fifth)



**BASS NOTES** -fundamental C /alternate G<sup>b</sup>



**BASS NOTES** -fundamental C /alternate G<sup>#</sup>

## C<sup>7</sup>#<sup>5</sup> or C<sup>7</sup>(+)

(C seventh with raised fifth)



**C<sup>dim7</sup> or C<sup>o7</sup>**

(C diminished seventh)

**BASS NOTES** -fundamental C /alternate G<sup>b</sup>

**BASS NOTES** -fundamental C /alternate G

**C<sup>9</sup>**

(C ninth)

**C<sup>7b9</sup> or C<sup>7(-9)</sup>**

(C seventh plus flatted ninth)

**BASS NOTES** -fundamental C /alternate G

**BASS NOTES** -fundamental C /alternate G

**C<sup>7#9</sup> or C<sup>7(+9)</sup>**

(C seventh plus raised ninth)

**C<sup>M7</sup> add<sup>9</sup>**

(C major seventh with added ninth)

**BASS NOTES** -fundamental C /alternate G

**BASS NOTES** -fundamental C /alternate G

**C<sup>m7</sup> add<sup>9</sup>**

(C minor seventh with added ninth)

**C<sup>9b5</sup> or C<sup>9(-5)</sup>**

(C ninth with flatted fifth)

**BASS NOTES** -fundamental C /alternate G<sup>b</sup>

**BASS NOTES** -fundamental C /alternate G<sup>#</sup>

**C<sup>9#5</sup> or C<sup>9(+5)</sup>**

(C ninth with raised fifth)

**C<sup>11</sup>**

(C eleventh)

**BASS NOTES** -fundamental C /alternate G

**BASS NOTES** -fundamental C /alternate G

**C<sup>aug11</sup>**

(C augmented eleventh)

**C<sup>13</sup>**

(C thirteenth)

**BASS NOTES** -fundamental C /alternate G

**BASS NOTES** -fundamental C /alternate G

**C<sup>13b9</sup> or C<sup>13(-9)</sup>**

(C thirteenth with flatted ninth)

**C#**  
(C# major)

**BASS NOTES** -fundamental C# /alternate G#

**C#m**  
(C# minor)

**BASS NOTES** -fundamental C# /alternate G#

**C# dim or C#°**  
(C# diminished)

**BASS NOTES** -fundamental C# /alternate G

**C# aug or C#+**  
(C# augmented)

**BASS NOTES** -fundamental C# /alternate A

**C#6**  
(C# sixth)

**BASS NOTES** -fundamental C# /alternate G#

**C#m6**  
(C# minor sixth)

**BASS NOTES** -fundamental C# /alternate G#

**C#7**  
(C# seventh)

**BASS NOTES** -fundamental C# /alternate G#

**C#7**  
(C# seventh) three note version with fifth omitte

**BASS NOTES** -fundamental C# /alternate G#

**C#M7**  
(C# major seventh)

**BASS NOTES** -fundamental C# /alternate G#

**C#m7**  
(C# minor seventh)

**BASS NOTES** -fundamental C# /alternate G#

**C#7b5 or C#7(-5)**  
(C# seventh with flatted fifth)

**BASS NOTES** fundamental C# /alternate G

**C#7#5 or C#7(+5)**  
(C# seventh with raised fifth)

**BASS NOTES** -fundamental C# /alternate A

## C# dim 7 or C#o7

(C# diminished seventh)

1 2 4 5  
b#

E C#  
Bb G

**BASS NOTES** fundamental C# /alternate G

**BASS NOTES** fundamental C# /alternate G#

## C#9

(C# ninth)

1 2 4 5  
#

D# B#  
G# F#

**BASS NOTES** fundamental C# /alternate G#

## C#7#9 or C#7(+9)

(C# seventh plus raised ninth)

1 2 4 5  
# x

D# B#  
G# F#

## C#7b9 or C#7(-9)

(C# seventh plus flatted ninth)

1 2 4 5  
#

D B  
G# F#

**BASS NOTES** fundamental C# /alternate G#

## C# M 7 add 9

(C# major seventh with added ninth)

1 2 4 5  
# #

D# B#  
G# F#

**BASS NOTES** fundamental C# /alternate G#

**BASS NOTES** fundamental C# /alternate G#

## C# m 7 add 9

(C# minor seventh with added ninth)

1 2 3 4 5  
#

D# B#  
G# F#

## C#9b5 or C#9(-5)

(C# ninth with flatted fifth)

1 2 4 5  
#

D# B#  
G# F#

**BASS NOTES** fundamental C# /alternate G

**BASS NOTES** fundamental C# /alternate A

## C#9#5 or C#9(+5)

(C# ninth with raised fifth)

1 2 3 4 5  
#

D# B#  
G# F#

## C# 11

(C# eleventh)

1 2 4 5  
# #

D# B#  
G# F#

**BASS NOTES** fundamental C# /alternate G#

**BASS NOTES** fundamental C# /alternate G#

## C# aug 11

(C# augmented eleventh)

1 3 4 5  
# #

D# B#  
G# F#

## C# 13

(C# thirteenth)

1 2 3 4 5  
# #

D# B#  
G# F#

**BASS NOTES** fundamental C# /alternate G#

**BASS NOTES** fundamental C# /alternate G#

## C#13b9 or C#13(-9)

(C# thirteenth with flatted ninth)

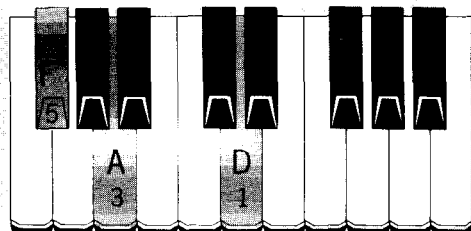
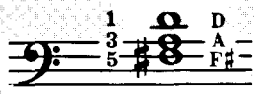
1 2 3 4 5  
# #

D B  
G# F#

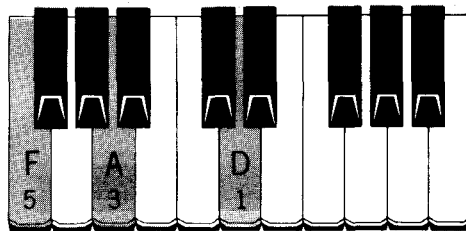
# D

## D

(D major)



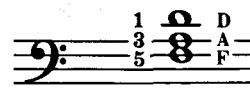
**BASS NOTES** -fundamental D /alternate A



**BASS NOTES** -fundamental D /alternate A

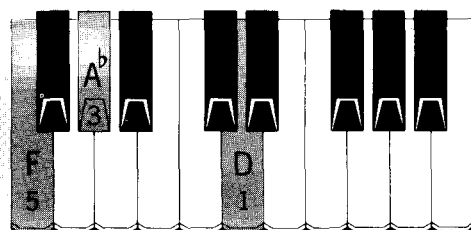
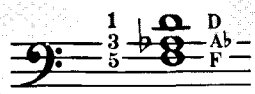
## D m

(D minor)

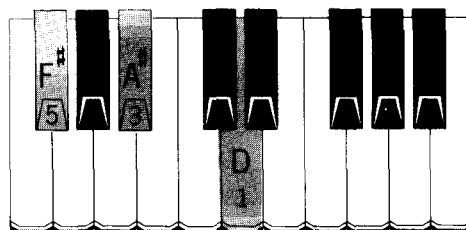


## D dim or D<sup>o</sup>

(D diminished)



**BASS NOTES** -fundamental D /alternate A<sup>b</sup>



**BASS NOTES** -fundamental D /alternate A<sup>#</sup>

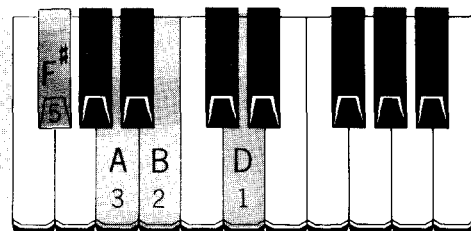
## D aug or D<sup>+</sup>

(D augmented)

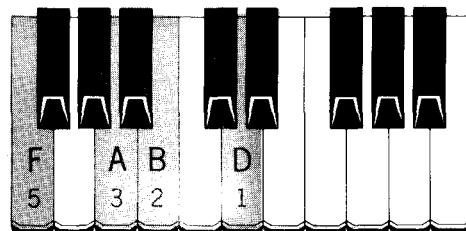


## D<sup>6</sup>

(D sixth)



**BASS NOTES** -fundamental D /alternate A



**BASS NOTES** -fundamental D /alternate A

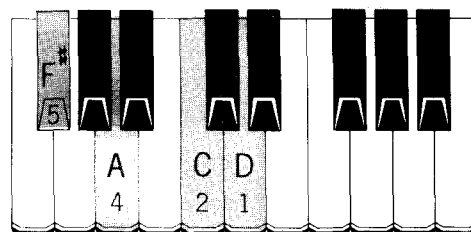
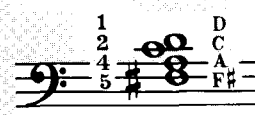
## D m<sup>6</sup>

(D minor sixth)

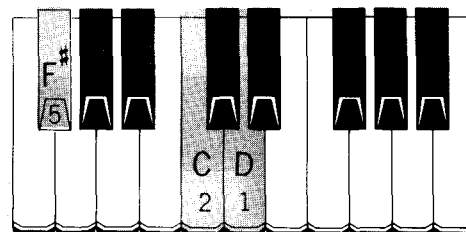


## D<sup>7</sup>

(D seventh)



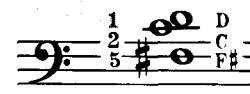
**BASS NOTES** -fundamental D /alternate A



**BASS NOTES** -fundamental D /alternate A

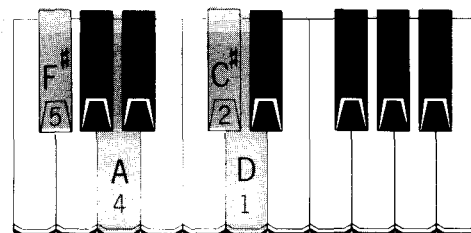
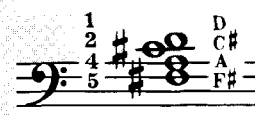
## D<sup>7</sup>

(D seventh) three note version with fifth omitted

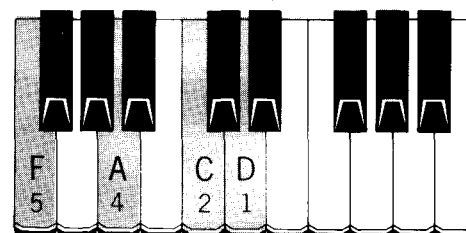


## D M<sup>7</sup>

(D major seventh)



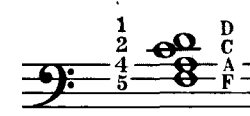
**BASS NOTES** -fundamental D /alternate A



**BASS NOTES** -fundamental D /alternate A

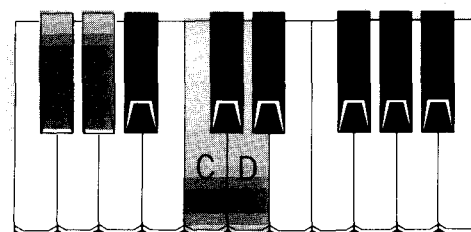
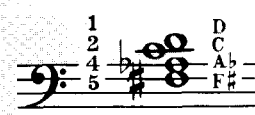
## D m<sup>7</sup>

(D minor seventh)

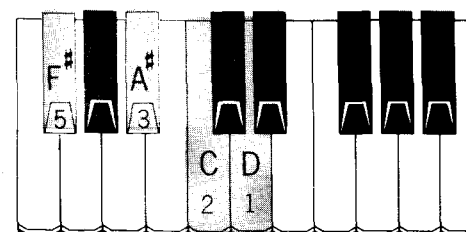


## D<sup>7b5</sup> or D<sup>7(-5)</sup>

(D seventh with flatted fifth)



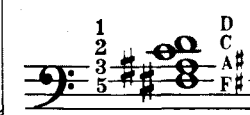
**BASS NOTES** -fundamental D /alternate A<sup>b</sup>



**BASS NOTES** -fundamental D /alternate A<sup>#</sup>

## D<sup>7#5</sup> or D<sup>7(+5)</sup>

(D seventh with raised fifth)





# D

## D<sup>dim7</sup> or D<sup>o7</sup>

(D diminished seventh)

Musical notation for D<sup>dim7</sup> or D<sup>o7</sup> in bass clef, 4/4 time. Fingering: 1, 2, 4, 5. Notes: D, C<sup>b</sup>, A<sup>b</sup>, F.

Piano keyboard diagram for D<sup>dim7</sup> or D<sup>o7</sup>. Shaded keys: D, C<sup>b</sup>, A<sup>b</sup>, F.

BASS NOTES -fundamental D /alternate A<sup>b</sup>

Piano keyboard diagram for D<sup>9</sup>. Shaded keys: D, A, C, E, G.

## D<sup>9</sup>

(D ninth)

Musical notation for D<sup>9</sup> in bass clef, 4/4 time. Fingering: 1, 2, 4, 5. Notes: D, C, A, G, F<sup>#</sup>.

BASS NOTES -fundamental D /alternate A

## D<sup>7b9</sup> or D<sup>7(-9)</sup>

(D seventh plus flatted ninth)

Musical notation for D<sup>7b9</sup> or D<sup>7(-9)</sup> in bass clef, 4/4 time. Fingering: 1, 2, 4, 5. Notes: D, C, A, F, E<sup>b</sup>.

Piano keyboard diagram for D<sup>7b9</sup> or D<sup>7(-9)</sup>. Shaded keys: D, C, A, F, E<sup>b</sup>.

BASS NOTES -fundamental D /alternate A

Piano keyboard diagram for D<sup>7#9</sup> or D<sup>7(+9)</sup>. Shaded keys: D, C, A, F, G<sup>#</sup>.

## D<sup>7#9</sup> or D<sup>7(+9)</sup>

(D seventh plus raised ninth)

Musical notation for D<sup>7#9</sup> or D<sup>7(+9)</sup> in bass clef, 4/4 time. Fingering: 1, 2, 4, 5. Notes: D, C, A, F, G<sup>#</sup>.

BASS NOTES -fundamental D /alternate A

## D<sup>M7</sup> add<sup>9</sup>

(D major seventh with added ninth)

Musical notation for D<sup>M7</sup> add<sup>9</sup> in bass clef, 4/4 time. Fingering: 1, 2, 3, 5. Notes: D, C<sup>#</sup>, A, F, G.

Piano keyboard diagram for D<sup>M7</sup> add<sup>9</sup>. Shaded keys: D, C<sup>#</sup>, A, F, G.

BASS NOTES -fundamental D /alternate A

Piano keyboard diagram for D<sup>m7</sup> add<sup>9</sup>. Shaded keys: D, C, A, F, G.

## D<sup>m7</sup> add<sup>9</sup>

(D minor seventh with added ninth)

Musical notation for D<sup>m7</sup> add<sup>9</sup> in bass clef, 4/4 time. Fingering: 1, 2, 4, 5. Notes: D, C, A, F, G.

BASS NOTES -fundamental D /alternate A

## D<sup>9b5</sup> or D<sup>9(-5)</sup>

(D ninth with flatted fifth)

Musical notation for D<sup>9b5</sup> or D<sup>9(-5)</sup> in bass clef, 4/4 time. Fingering: 1, 2, 4, 5. Notes: D, C, A, F, E<sup>b</sup>.

Piano keyboard diagram for D<sup>9b5</sup> or D<sup>9(-5)</sup>. Shaded keys: D, C, A, F, E<sup>b</sup>.

BASS NOTES -fundamental D /alternate A<sup>b</sup>

Piano keyboard diagram for D<sup>9#5</sup> or D<sup>9(+5)</sup>. Shaded keys: D, C, A, F, G<sup>#</sup>.

## D<sup>9#5</sup> or D<sup>9(+5)</sup>

(D ninth with raised fifth)

Musical notation for D<sup>9#5</sup> or D<sup>9(+5)</sup> in bass clef, 4/4 time. Fingering: 1, 2, 3, 5. Notes: D, C, A, F, G<sup>#</sup>.

BASS NOTES -fundamental D /alternate A<sup>#</sup>

## D<sup>11</sup>

(D eleventh)

Musical notation for D<sup>11</sup> in bass clef, 4/4 time. Fingering: 1, 2, 4, 5. Notes: D, C, A, G.

Piano keyboard diagram for D<sup>11</sup>. Shaded keys: D, C, A, G.

BASS NOTES -fundamental D /alternate A

Piano keyboard diagram for D<sup>aug11</sup>. Shaded keys: D, C, A, G, F<sup>#</sup>.

## D<sup>aug11</sup>

(D augmented eleventh)

Musical notation for D<sup>aug11</sup> in bass clef, 4/4 time. Fingering: 1, 2, 4, 5. Notes: D, C, A, G, F<sup>#</sup>.

BASS NOTES -fundamental D /alternate A

## D<sup>13</sup>

(D thirteenth)

Musical notation for D<sup>13</sup> in bass clef, 4/4 time. Fingering: 1, 2, 3, 5. Notes: D, C, B, F, G.

Piano keyboard diagram for D<sup>13</sup>. Shaded keys: D, C, B, F, G.

BASS NOTES -fundamental D /alternate A

Piano keyboard diagram for D<sup>13b9</sup> or D<sup>13(-9)</sup>. Shaded keys: D, C, B, F, G, E<sup>b</sup>.

## D<sup>13b9</sup> or D<sup>13(-9)</sup>

(D thirteenth with flatted ninth)

Musical notation for D<sup>13b9</sup> or D<sup>13(-9)</sup> in bass clef, 4/4 time. Fingering: 1, 2, 3, 5. Notes: D, C, B, F, G, E<sup>b</sup>.

BASS NOTES -fundamental D /alternate A



# D<sup>b</sup>

**D<sup>b</sup>**  
(D<sup>b</sup> major)

1 3 5  
F  
D<sup>b</sup>  
A<sup>b</sup>

A<sup>b</sup> 5  
D<sup>b</sup> 3  
F 1

**BASS NOTES** -fundamental D<sup>b</sup> /alternate A<sup>b</sup>

A<sup>b</sup> 5  
D<sup>b</sup> 3  
F<sup>b</sup> 1

**BASS NOTES** -fundamental D<sup>b</sup> /alternate A<sup>b</sup>

**D<sup>b</sup>**  
(D<sup>b</sup> minor)

1 3 5  
F  
D  
A

**D<sup>b</sup> dim or D<sup>b</sup>°**  
(D<sup>b</sup> diminished)

1 3 5  
F<sup>b</sup>  
D<sup>b</sup>  
G

D<sup>b</sup> 2  
G 5  
F<sup>b</sup> 1

**BASS NOTES** -fundamental D<sup>b</sup> /alternate G

D<sup>b</sup> 3  
A 5  
F 1

**BASS NOTES** -fundamental D<sup>b</sup> /alternate A

**D<sup>b</sup> aug or D<sup>b</sup>+**  
(D<sup>b</sup> augmented)

1 3 5  
F  
D  
A

**D<sup>b</sup> 6**  
(D<sup>b</sup> sixth)

1 2 3 4 5  
F<sup>b</sup>  
D<sup>b</sup>  
E<sup>b</sup>  
A<sup>b</sup>

A<sup>b</sup> 5  
B<sup>b</sup> 4  
D<sup>b</sup> 2  
F 1

**BASS NOTES** -fundamental D<sup>b</sup> /alternate A<sup>b</sup>

A<sup>b</sup> 5  
B<sup>b</sup> 4  
D<sup>b</sup> 2  
F<sup>b</sup> 1

**BASS NOTES** -fundamental D<sup>b</sup> /alternate A<sup>b</sup>

**D<sup>b</sup> m**  
(D<sup>b</sup> minor six)

1 2 3 4 5  
F  
D<sup>b</sup>  
E  
A

**D<sup>b</sup> 7**  
(D<sup>b</sup> seventh)

1 2 3 4 5  
F  
D<sup>b</sup>  
C<sup>b</sup>  
A<sup>b</sup>

A<sup>b</sup> 5  
D<sup>b</sup> 2  
C<sup>b</sup> 3  
F 1

**BASS NOTES** -fundamental D<sup>b</sup> /alternate A<sup>b</sup>

D<sup>b</sup> 2  
C<sup>b</sup> 3  
F 1

**BASS NOTES** -fundamental D<sup>b</sup> /alternate A<sup>b</sup>

**D<sup>b</sup>**  
(D<sup>b</sup> seventh) three note version with fifth omni

1 2 3  
F  
D<sup>b</sup>  
C

**D<sup>b</sup> M<sup>7</sup>**  
(D<sup>b</sup> major seventh)

1 2 3 4 5  
F  
D<sup>b</sup>  
C  
A<sup>b</sup>

A<sup>b</sup> 5  
D<sup>b</sup> 2  
C 3  
F 1

**BASS NOTES** -fundamental D<sup>b</sup> /alternate A<sup>b</sup>

A<sup>b</sup> 4  
D<sup>b</sup> 2  
C<sup>b</sup> 3  
F<sup>b</sup> 1

**BASS NOTES** -fundamental D<sup>b</sup> /alternate A<sup>b</sup>

**D<sup>b</sup> m**  
(D<sup>b</sup> minor seventh)

1 2 3 4  
F  
D<sup>b</sup>  
C  
A

**D<sup>b</sup> 7<sup>b</sup>5 or D<sup>b</sup>7(-5)**  
(D<sup>b</sup> seventh with flatted fifth)

1 2 3 4 5  
F  
D<sup>b</sup>  
C<sup>b</sup>  
G

D<sup>b</sup> 2  
G 5  
C<sup>b</sup> 3  
F 1

**BASS NOTES** -fundamental D<sup>b</sup> /alternate G

D<sup>b</sup> 3  
A 5  
C<sup>b</sup> 4  
F 1

**BASS NOTES** -fundamental D<sup>b</sup> /alternate A

**D<sup>b</sup> 7<sup>#</sup>5 or D<sup>b</sup>7(+)**  
(D<sup>b</sup> seventh with raised fifth)

1 3 4 5  
F  
D<sup>b</sup>  
C  
G

## D<sup>b</sup> dim<sup>7</sup> or D<sup>b</sup> o<sup>7</sup>

(D<sup>b</sup> diminished seventh)

Musical notation for D<sup>b</sup> dim<sup>7</sup> or D<sup>b</sup> o<sup>7</sup> in bass clef. The notes are G<sup>b</sup> (5), B<sup>b</sup> (4), D<sup>b</sup> (2), and F<sup>b</sup> (1).

Keyboard diagram for D<sup>b</sup> dim<sup>7</sup> or D<sup>b</sup> o<sup>7</sup>. The notes are G<sup>b</sup> (5), B<sup>b</sup> (4), D<sup>b</sup> (2), and F<sup>b</sup> (1).

**BASS NOTES** -fundamental D<sup>b</sup> /alternate G

## D<sup>b</sup> 7<sup>b</sup>9 or D<sup>b</sup> 7(-9)

(D<sup>b</sup> seventh plus flatted ninth)

Musical notation for D<sup>b</sup> 7<sup>b</sup>9 or D<sup>b</sup> 7(-9) in bass clef. The notes are F (5), A<sup>b</sup> (4), C<sup>b</sup> (2), and D (1).

Keyboard diagram for D<sup>b</sup> 7<sup>b</sup>9 or D<sup>b</sup> 7(-9). The notes are F (5), A<sup>b</sup> (4), C<sup>b</sup> (2), and D (1).

**BASS NOTES** -fundamental D<sup>b</sup> /alternate A<sup>b</sup>

## D<sup>b</sup> M add<sup>9</sup>

(D<sup>b</sup> major seventh with added ninth)

Musical notation for D<sup>b</sup> M add<sup>9</sup> in bass clef. The notes are F (5), A<sup>b</sup> (4), C (2), and E<sup>b</sup> (1).

Keyboard diagram for D<sup>b</sup> M add<sup>9</sup>. The notes are F (5), A<sup>b</sup> (4), C (2), and E<sup>b</sup> (1).

**BASS NOTES** -fundamental D<sup>b</sup> /alternate A<sup>b</sup>

## D<sup>b</sup> 9<sup>b</sup>5 or D<sup>b</sup> 9(-5)

(D<sup>b</sup> ninth with flatted fifth)

Musical notation for D<sup>b</sup> 9<sup>b</sup>5 or D<sup>b</sup> 9(-5) in bass clef. The notes are F (5), G (4), C<sup>b</sup> (2), and E<sup>b</sup> (1).

Keyboard diagram for D<sup>b</sup> 9<sup>b</sup>5 or D<sup>b</sup> 9(-5). The notes are F (5), G (4), C<sup>b</sup> (2), and E<sup>b</sup> (1).

**BASS NOTES** -fundamental D<sup>b</sup> /alternate G

## D<sup>b</sup> 11

(D<sup>b</sup> eleventh)

Musical notation for D<sup>b</sup> 11 in bass clef. The notes are G<sup>b</sup> (5), A<sup>b</sup> (4), C<sup>b</sup> (2), and E<sup>b</sup> (1).

Keyboard diagram for D<sup>b</sup> 11. The notes are G<sup>b</sup> (5), A<sup>b</sup> (4), C<sup>b</sup> (2), and E<sup>b</sup> (1).

**BASS NOTES** -fundamental D<sup>b</sup> /alternate A<sup>b</sup>

## D<sup>b</sup> 13

(D<sup>b</sup> thirteenth)

Musical notation for D<sup>b</sup> 13 in bass clef. The notes are F (5), B<sup>b</sup> (3), C<sup>b</sup> (2), and E<sup>b</sup> (1).

Keyboard diagram for D<sup>b</sup> 13. The notes are F (5), B<sup>b</sup> (3), C<sup>b</sup> (2), and E<sup>b</sup> (1).

**BASS NOTES** -fundamental D<sup>b</sup> /alternate A<sup>b</sup>

Keyboard diagram for D<sup>b</sup> 9. The notes are F (5), A<sup>b</sup> (4), C<sup>b</sup> (2), and E<sup>b</sup> (1).

## D<sup>b</sup> 9

D<sup>b</sup> ninth.

Musical notation for D<sup>b</sup> 9 in bass clef. The notes are F (5), A<sup>b</sup> (4), C<sup>b</sup> (2), and E<sup>b</sup> (1).

**BASS NOTES** -fundamental D<sup>b</sup> /alternate A<sup>b</sup>

Keyboard diagram for D<sup>b</sup> 7<sup>#</sup>9 or D<sup>b</sup> 7(+9). The notes are F (5), A<sup>b</sup> (4), C<sup>b</sup> (2), and E (1).

## D<sup>b</sup> 7<sup>#</sup>9 or D<sup>b</sup> 7(+9)

(D<sup>b</sup> seventh plus raised ninth)

Musical notation for D<sup>b</sup> 7<sup>#</sup>9 or D<sup>b</sup> 7(+9) in bass clef. The notes are F (5), A<sup>b</sup> (4), C<sup>b</sup> (2), and E (1).

**BASS NOTES** -fundamental D<sup>b</sup> /alternate A<sup>b</sup>

Keyboard diagram for D<sup>b</sup> m add<sup>9</sup>. The notes are F<sup>b</sup> (5), A<sup>b</sup> (4), C<sup>b</sup> (2), and E<sup>b</sup> (1).

## D<sup>b</sup> m add<sup>9</sup>

(D<sup>b</sup> minor seventh with added ninth)

Musical notation for D<sup>b</sup> m add<sup>9</sup> in bass clef. The notes are F<sup>b</sup> (5), A<sup>b</sup> (4), C<sup>b</sup> (2), and E<sup>b</sup> (1).

**BASS NOTES** -fundamental D<sup>b</sup> /alternate A<sup>b</sup>

Keyboard diagram for D<sup>b</sup> 9<sup>#</sup>5 or D<sup>b</sup> 9(+5). The notes are F (5), A (3), C<sup>b</sup> (2), and E<sup>b</sup> (1).

## D<sup>b</sup> 9<sup>#</sup>5 or D<sup>b</sup> 9(+5)

(D<sup>b</sup> ninth with raised fifth)

Musical notation for D<sup>b</sup> 9<sup>#</sup>5 or D<sup>b</sup> 9(+5) in bass clef. The notes are F (5), A (3), C<sup>b</sup> (2), and E<sup>b</sup> (1).

**BASS NOTES** -fundamental D<sup>b</sup> /alternate A

Keyboard diagram for D<sup>b</sup> aug<sup>11</sup>. The notes are G (5), A<sup>b</sup> (4), C<sup>b</sup> (2), and E<sup>b</sup> (1).

## D<sup>b</sup> aug<sup>11</sup>

(D<sup>b</sup> augmented eleventh)

Musical notation for D<sup>b</sup> aug<sup>11</sup> in bass clef. The notes are G (5), A<sup>b</sup> (4), C<sup>b</sup> (2), and E<sup>b</sup> (1).

**BASS NOTES** -fundamental D<sup>b</sup> /alternate A<sup>b</sup>

Keyboard diagram for D<sup>b</sup> 13<sup>b</sup>9 or D<sup>b</sup> 13(-9). The notes are F (5), B<sup>b</sup> (3), C<sup>b</sup> (2), and D (1).

## D<sup>b</sup> 13<sup>b</sup>9 or D<sup>b</sup> 13(-9)

(D<sup>b</sup> thirteenth with flatted ninth)

Musical notation for D<sup>b</sup> 13<sup>b</sup>9 or D<sup>b</sup> 13(-9) in bass clef. The notes are F (5), B<sup>b</sup> (3), C<sup>b</sup> (2), and D (1).

**BASS NOTES** -fundamental D<sup>b</sup> /alternate A<sup>b</sup>

# E

**E**  
E major

**BASS NOTES** -fundamental E /alternate B

**BASS NOTES** -fundamental E /alternate B

**E<sub>m</sub>**  
(E minor)

**E<sup>dim</sup> or E<sup>o</sup>**  
E diminished

**BASS NOTES** -fundamental E /alternate B<sup>b</sup>

**BASS NOTES** -fundamental E /alternate G<sup>#</sup>

**E<sup>aug</sup> or E<sup>+</sup>**  
(E augmented)

**E<sup>6</sup>**  
E sixth

**BASS NOTES** -fundamental E /alternate B

**BASS NOTES** -fundamental E /alternate B

**E<sup>m6</sup>**  
(E minor sixth)

**E<sup>7</sup>**  
E seventh

**BASS NOTES** -fundamental E /alternate B

**BASS NOTES** -fundamental E /alternate B

**E<sup>7</sup>**  
(E seventh) three note version with fifth omitted

**E<sup>M7</sup>**  
E major seventh

**BASS NOTES** -fundamental E /alternate B

**BASS NOTES** -fundamental E /alternate B

**E<sup>m7</sup>**  
(E minor seventh)

**E<sup>7b5</sup> or E<sup>7(-5)</sup>**  
E seventh with flatted fifth

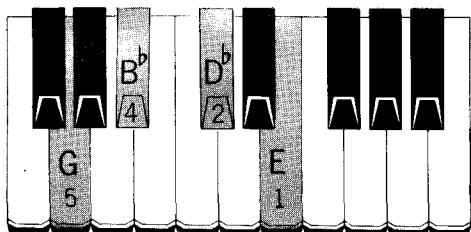
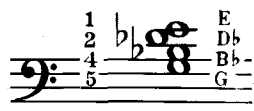
**BASS NOTES** -fundamental E /alternate B<sup>b</sup>

**BASS NOTES** -fundamental E /alternate B<sup>#</sup>(C)

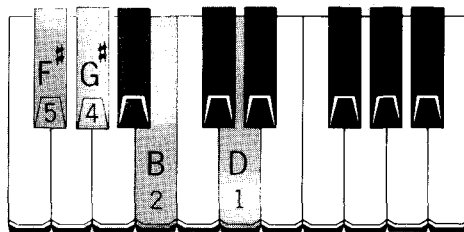
**E<sup>7#5</sup> or E<sup>7(+5)</sup>**  
(E seventh with raised fifth)

## E<sup>dim</sup>7 or E<sup>o</sup>7

(E diminished seventh)



**BASS NOTES** -fundamental E /alternate B<sup>b</sup>



**BASS NOTES** -fundamental E /alternate B

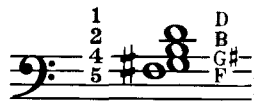
## E

(E ninth)

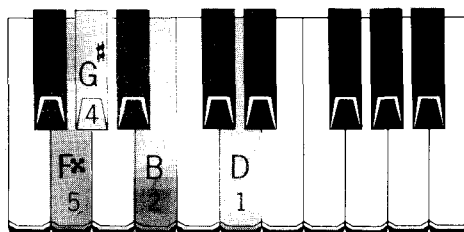


## E<sup>7b9</sup> or E<sup>7(-9)</sup>

(E seventh plus flatted ninth)



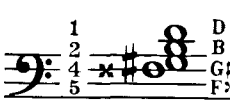
**BASS NOTES** -fundamental E /alternate B



**BASS NOTES** -fundamental E /alternate B

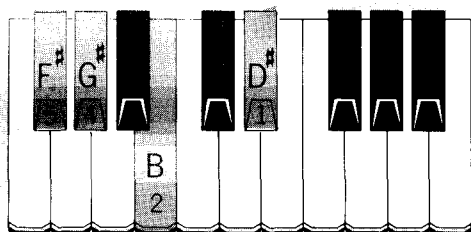
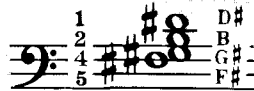
## E<sup>7#9</sup> or E<sup>7(+9)</sup>

(E seventh plus raised ninth)

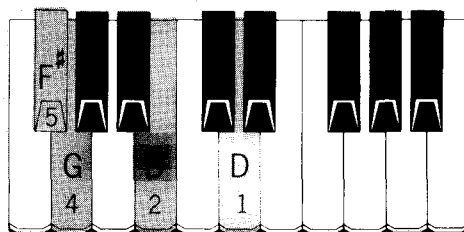


## E<sup>M</sup>7 add<sup>9</sup>

(E major seventh with added ninth)



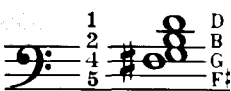
**BASS NOTES** -fundamental E /alternate B



**BASS NOTES** -fundamental E /alternate B

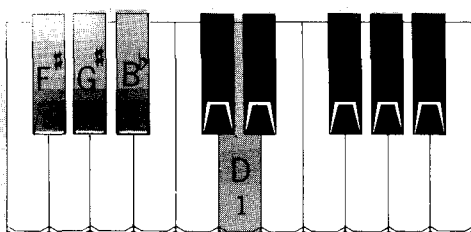
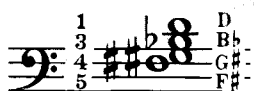
## E<sup>m</sup>7 add<sup>9</sup>

(E minor seventh with added ninth)

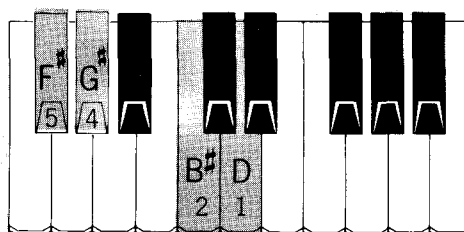


## E<sup>9b5</sup> or E<sup>9(-5)</sup>

(E ninth with flatted fifth)



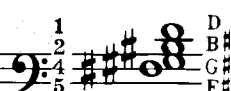
**BASS NOTES** -fundamental E /alternate B<sup>b</sup>



**BASS NOTES** -fundamental E /alternate B# (C)

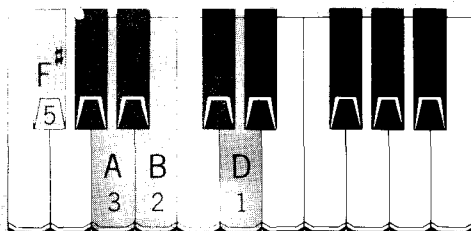
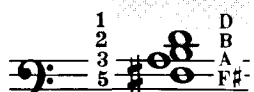
## E<sup>9#5</sup> or E<sup>9(+5)</sup>

(E ninth with raised fifth)

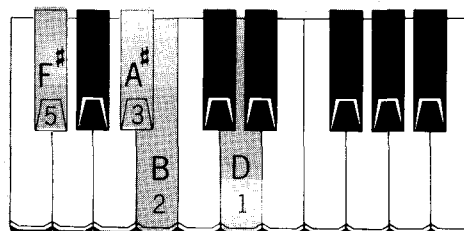


## E<sup>11</sup>

(E eleventh)



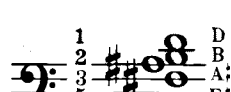
**BASS NOTES** -fundamental E /alternate B



**BASS NOTES** -fundamental E /alternate B

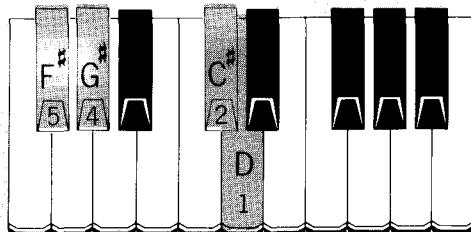
## E<sup>aug</sup>11

(E augmented eleventh)

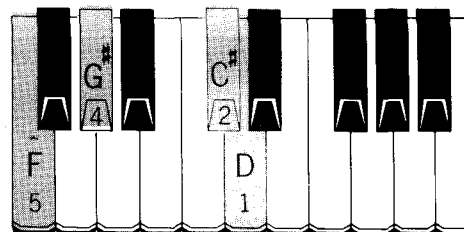


## E<sup>13</sup>

(E thirteenth)



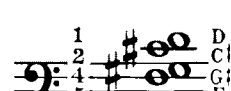
**BASS NOTES** -fundamental E /alternate B



**BASS NOTES** -fundamental E /alternate B

## E<sup>13b9</sup> or E<sup>13(-9)</sup>

(E thirteenth with flatted ninth)



# E<sup>b</sup>

**E<sup>b</sup>**  
(E<sup>b</sup> major)

1 2 3 4  
b 8

E<sup>b</sup>  
B<sup>b</sup>  
G

G 4  
B<sup>b</sup> 2  
E<sup>b</sup> 1

**BASS NOTES** fundamental E<sup>b</sup> /alternate B<sup>b</sup>

G<sup>b</sup> 5  
B<sup>b</sup> 3  
E<sup>b</sup> 1

**BASS NOTES** fundamental E<sup>b</sup> /alternate B<sup>b</sup>

**E<sup>b</sup> n**  
(E<sup>b</sup> minor)

1 2 3 4  
b 8

E<sup>b</sup>  
B<sup>b</sup>  
G<sup>b</sup>

**E<sup>b</sup> dim or E<sup>b</sup> o**  
(E<sup>b</sup> diminished)

1 2 3 4  
5

E<sup>b</sup>  
A  
G<sup>b</sup>

G<sup>b</sup> 5  
A 3  
E<sup>b</sup> 1

**BASS NOTES** fundamental E<sup>b</sup> /alternate A

G 4  
B 2  
E<sup>b</sup> 1

**BASS NOTES** fundamental E<sup>b</sup> /alternate B

**E<sup>b</sup> aug or E<sup>b</sup> +**  
(E<sup>b</sup> augmented)

1 2 3 4  
5

E<sup>b</sup>  
B  
G

**E<sup>b</sup> 6**  
(E<sup>b</sup> sixth)

1 2 3 4  
5

E<sup>b</sup>  
C  
B<sup>b</sup>  
G

G 5  
B<sup>b</sup> 3  
C 2  
E<sup>b</sup> 1

**BASS NOTES** fundamental E<sup>b</sup> /alternate B<sup>b</sup>

G<sup>b</sup> 5  
B<sup>b</sup> 3  
C 2  
E<sup>b</sup> 1

**BASS NOTES** fundamental E<sup>b</sup> /alternate B<sup>b</sup>

**E<sup>b</sup> m**  
(E<sup>b</sup> minor sixth)

1 2 3 4  
5

E<sup>b</sup>  
C  
B<sup>b</sup>  
G<sup>b</sup>

**E<sup>b</sup> 7**  
(E<sup>b</sup> seventh)

1 2 3 4  
5

E<sup>b</sup>  
D<sup>b</sup>  
B<sup>b</sup>  
G

G 5  
B<sup>b</sup> 3  
D<sup>b</sup> 2  
E<sup>b</sup> 1

**BASS NOTES** fundamental E<sup>b</sup> /alternate B<sup>b</sup>

G 5  
D<sup>b</sup> 2  
E<sup>b</sup> 1

**BASS NOTES** fundamental E<sup>b</sup> /alternate B<sup>b</sup>

**E<sup>b</sup>**  
(E<sup>b</sup> seventh) three no version with fifth omitte

1 2 3 4  
5

E<sup>b</sup>  
D<sup>b</sup>  
B<sup>b</sup>  
G

**E<sup>b</sup> M 7**  
(E<sup>b</sup> major seventh)

1 2 3 4  
5

E<sup>b</sup>  
D  
B<sup>b</sup>  
G

G 5  
B<sup>b</sup> 4  
D 2  
E<sup>b</sup> 1

**BASS NOTES** fundamental E<sup>b</sup> /alternate B<sup>b</sup>

G<sup>b</sup> 5  
B<sup>b</sup> 3  
D<sup>b</sup> 2  
E<sup>b</sup> 1

**BASS NOTES** fundamental E<sup>b</sup> /alternate B<sup>b</sup>

**E<sup>b</sup> m**  
(E<sup>b</sup> minor seven)

1 2 3 4  
5

E<sup>b</sup>  
D<sup>b</sup>  
B<sup>b</sup>  
G<sup>b</sup>

**E<sup>b</sup> 7<sup>b</sup> 5 or E<sup>b</sup> 7(-5)**  
(E<sup>b</sup> seventh with flatted fifth)

1 2 3 4  
5

E<sup>b</sup>  
D<sup>b</sup>  
A  
G

G 5  
A 4  
D<sup>b</sup> 2  
E<sup>b</sup> 1

**BASS NOTES** fundamental E<sup>b</sup> /alternate A

G 5  
B 3  
D<sup>b</sup> 2  
E<sup>b</sup> 1

**BASS NOTES** fundamental E<sup>b</sup> /alternate B

**E<sup>b</sup> 7<sup>#</sup> 5 or E<sup>b</sup> 7(+5)**  
(E<sup>b</sup> seventh with raised fifth)

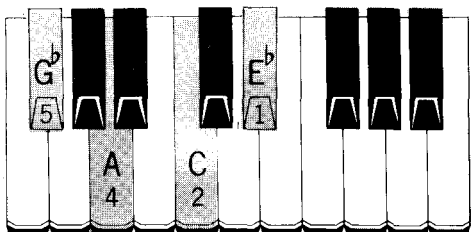
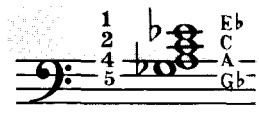
1 2 3 4  
5

E<sup>b</sup>  
D<sup>b</sup>  
B  
G

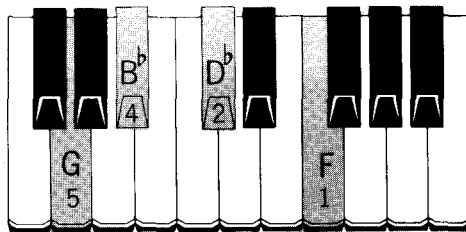
# E<sup>b</sup>

## E<sup>b</sup> dim<sup>7</sup> or E<sup>b</sup> o<sup>7</sup>

(E<sup>b</sup> diminished seventh)



**BASS NOTES** -fundamental E<sup>b</sup> /alternate A



**BASS NOTES** -fundamental E<sup>b</sup> /alternate B<sup>b</sup>

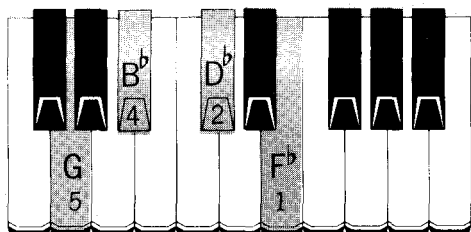
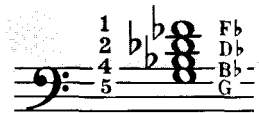
## E<sup>b</sup> 9

(E<sup>b</sup> ninth)

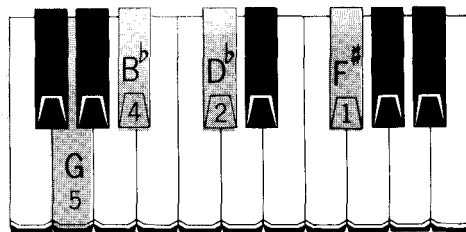


## E<sup>b</sup> 7<sup>b</sup>9 or E<sup>b</sup> 7(+9)

(E<sup>b</sup> seventh plus flatted ninth)



**BASS NOTES** -fundamental E<sup>b</sup> /alternate B<sup>b</sup>



**BASS NOTES** -fundamental E<sup>b</sup> /alternate B<sup>b</sup>

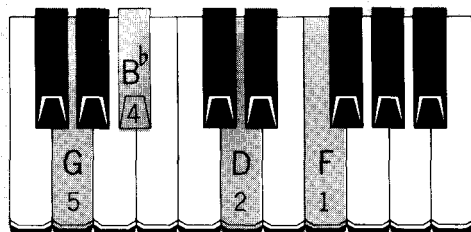
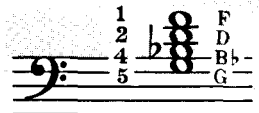
## E<sup>b</sup> 7<sup>#</sup>9 or E<sup>b</sup> 7(+9)

(E<sup>b</sup> seventh plus raised ninth)

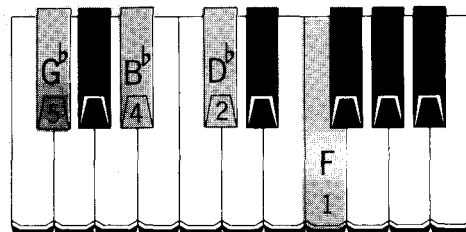


## E<sup>b</sup> M<sup>7</sup> add<sup>9</sup>

(E<sup>b</sup> major seventh with added ninth)



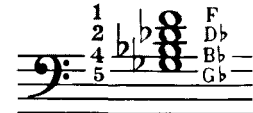
**BASS NOTES** -fundamental E<sup>b</sup> /alternate B<sup>b</sup>



**BASS NOTES** -fundamental E<sup>b</sup> /alternate B<sup>b</sup>

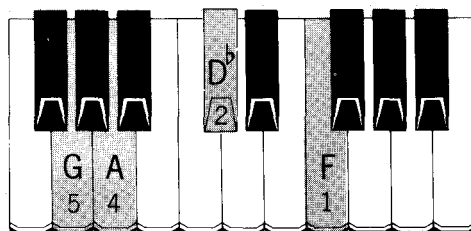
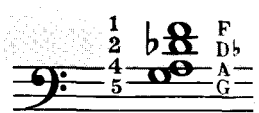
## E<sup>b</sup> m<sup>7</sup> add<sup>9</sup>

(E<sup>b</sup> minor seventh with added ninth)

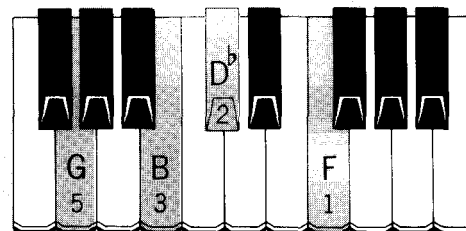


## E<sup>b</sup> 9<sup>b</sup>5 or E<sup>b</sup> 9(-5)

(E<sup>b</sup> ninth with flatted fifth)



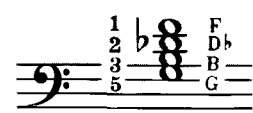
**BASS NOTES** -fundamental E<sup>b</sup> /alternate A



**BASS NOTES** -fundamental E<sup>b</sup> /alternate B

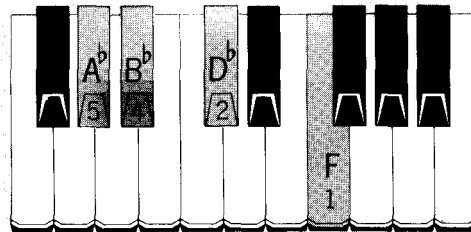
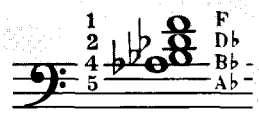
## E<sup>b</sup> 9<sup>#</sup>5 or E<sup>b</sup> 9(+5)

(E<sup>b</sup> ninth with raised fifth)

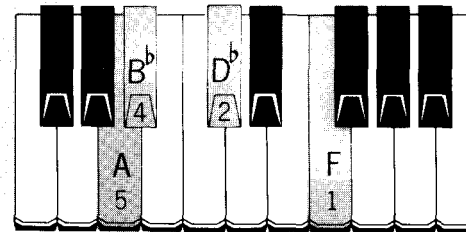


## E<sup>b</sup> 11

(E<sup>b</sup> eleventh)



**BASS NOTES** -fundamental E<sup>b</sup> /alternate B<sup>b</sup>



**BASS NOTES** -fundamental E<sup>b</sup> /alternate B<sup>b</sup>

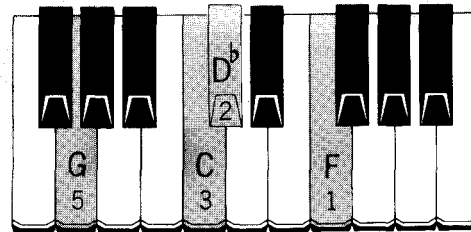
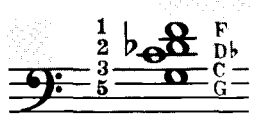
## E<sup>b</sup> aug<sup>11</sup>

(E<sup>b</sup> augmented eleventh)

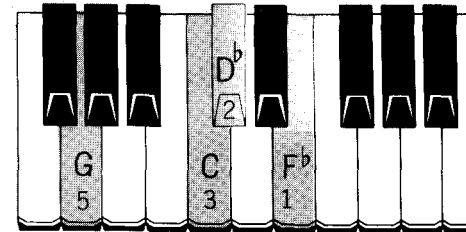


## E<sup>b</sup> 13

(E<sup>b</sup> thirteenth)



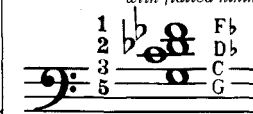
**BASS NOTES** -fundamental E<sup>b</sup> /alternate B<sup>b</sup>



**BASS NOTES** -fundamental E<sup>b</sup> /alternate B<sup>b</sup>

## E<sup>b</sup> 13<sup>b</sup>9 or E<sup>b</sup> 13(-9)

(E<sup>b</sup> thirteenth with flatted ninth)



**F**  
(F major)

**BASS NOTES** -fundamental F /alternate C

**F<sup>m</sup>**  
(F minor)

**BASS NOTES** -fundamental F /alternate C

**F<sup>dim</sup> or F<sup>o</sup>**  
(F diminished)

**BASS NOTES** -fundamental F /alternate C<sup>b</sup>(B)

**F<sup>aug</sup> or F<sup>+</sup>**  
(F augmented)

**BASS NOTES** -fundamental F /alternate C<sup>#</sup>

**F<sup>6</sup>**  
(F sixth)

**BASS NOTES** -fundamental F /alternate C

**F<sup>m6</sup>**  
(F minor sixth)

**BASS NOTES** -fundamental F /alternate C

**F<sup>7</sup>**  
(F seventh)

**BASS NOTES** -fundamental F /alternate C

**F<sup>7</sup>**  
(F seventh) three note version with fifth omitted

**BASS NOTES** -fundamental F /alternate C

**F<sup>M7</sup>**  
(F major seventh)

**BASS NOTES** -fundamental F /alternate C

**F<sup>m7</sup>**  
(F minor seventh)

**BASS NOTES** -fundamental F /alternate C

**F<sup>7b5</sup> or F<sup>7(-5)</sup>**  
(F seventh with flatted fifth)

**BASS NOTES** -fundamental F /alternate C<sup>b</sup>(B)

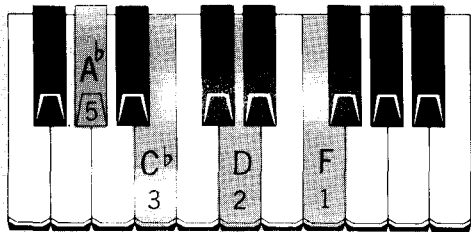
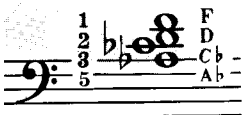
**F<sup>7#5</sup> or F<sup>7(+5)</sup>**  
(F seventh with raised fifth)

**BASS NOTES** -fundamental F /alternate C<sup>#</sup>

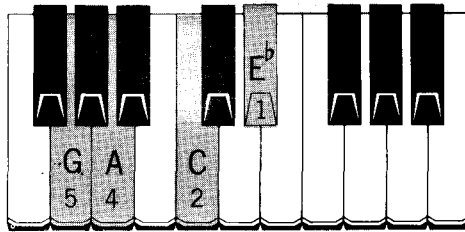


## Fdim<sup>7</sup> or F<sup>o</sup>7

(F diminished seventh)

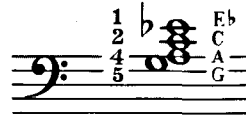


**BASS NOTES** -fundamental F /alternate C<sup>b</sup>(B)



## F<sup>9</sup>

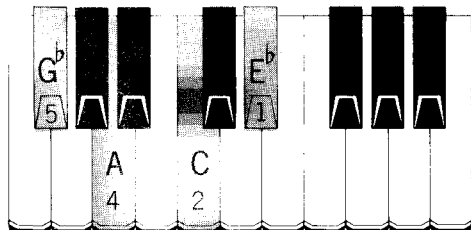
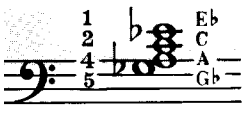
(F ninth)



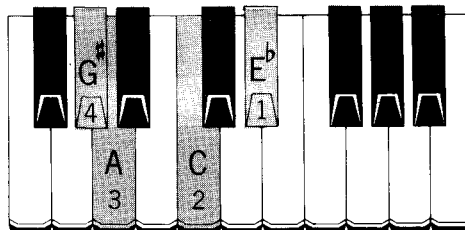
**BASS NOTES** -fundamental F /alternate C

## F7<sup>b</sup>9 or F7(-9)

(F seventh plus flatted ninth)

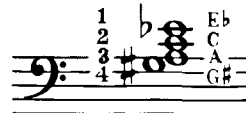


**BASS NOTES** -fundamental F /alternate C



## F7<sup>#</sup>9 or F7(+9)

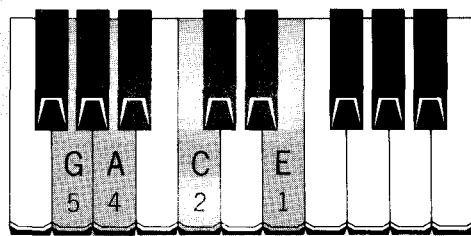
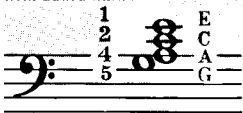
(F seventh plus raised ninth)



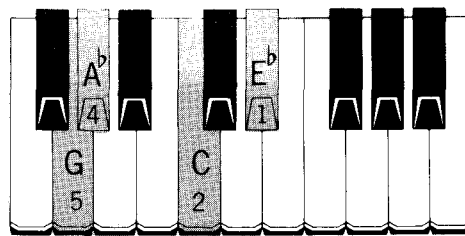
**BASS NOTES** -fundamental F /alternate C

## F<sup>M</sup>7 add<sup>9</sup>

(F major seventh with added ninth)

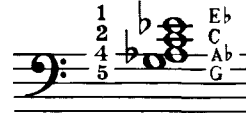


**BASS NOTES** -fundamental F /alternate C



## F<sup>m</sup>7 add<sup>9</sup>

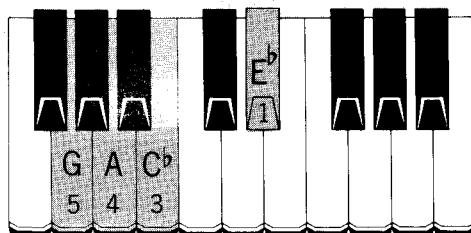
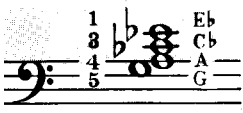
(F minor seventh with added ninth)



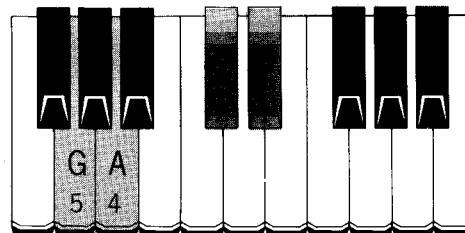
**BASS NOTES** -fundamental F /alternate C

## F<sup>9</sup>b5 or F<sup>9</sup>(-5)

(F ninth with flatted fifth)



**BASS NOTES** -fundamental F /alternate C<sup>b</sup>(B)



## F<sup>9</sup>b5 or F<sup>9</sup>(-5)

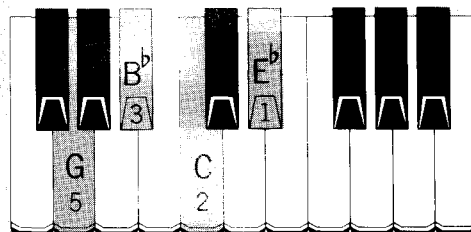
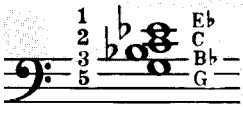
(F ninth with raised fifth)



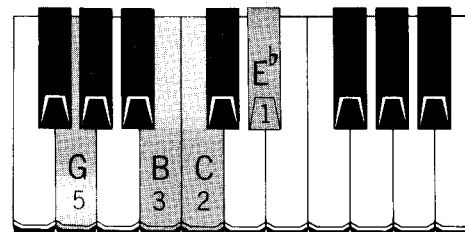
**BASS NOTES** -fundamental F /alternate C<sup>#</sup>

## F<sup>11</sup>

(F eleventh)



**BASS NOTES** -fundamental F /alternate C



## F<sup>aug</sup>11

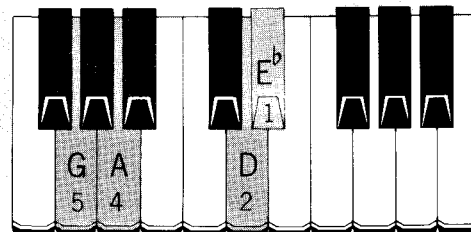
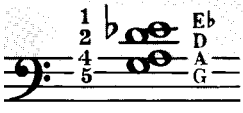
(F augmented eleventh)



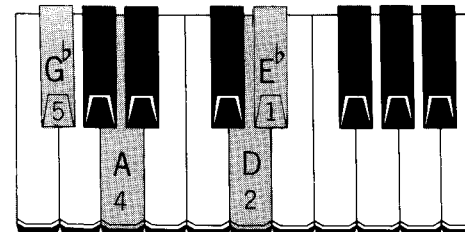
**BASS NOTES** -fundamental F /alternate C

## F<sup>13</sup>

(F thirteenth)

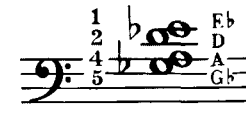


**BASS NOTES** -fundamental F /alternate C



## F<sup>13</sup>b9 or F<sup>13</sup>(-9)

(F thirteenth with flatted ninth)



**BASS NOTES** -fundamental F /alternate C



**F#**  
(F# major)

**BASS NOTES** -fundamental F# /alternate C#

**F#m**  
(F# minor)

**BASS NOTES** -fundamental F# /alternate C#

**F# dim or F#°**  
(F# diminished)

**BASS NOTES** -fundamental F# /alternate C

**F# aug or F#+**  
(F# augmented)

**BASS NOTES** -fundamental F# /alternate D

**F# 6**  
(F# sixth)

**BASS NOTES** -fundamental F# /alternate C#

**F#m 6**  
(F# minor sixth)

**BASS NOTES** -fundamental F# /alternate C#

**F# 7**  
(F# seventh)

**BASS NOTES** -fundamental F# /alternate C#

**F# 7**  
(F# seventh) three note version with fifth omitted

**BASS NOTES** -fundamental F# /alternate C#

**F#M 7**  
(F# major seventh)

**BASS NOTES** -fundamental F# /alternate C#

**F#m 7**  
(F# minor seventh)

**BASS NOTES** -fundamental F# /alternate C#

**F# 7b5 or F# 7(-5)**  
(F# seventh with flattened fifth)

**BASS NOTES** -fundamental F# /alternate C

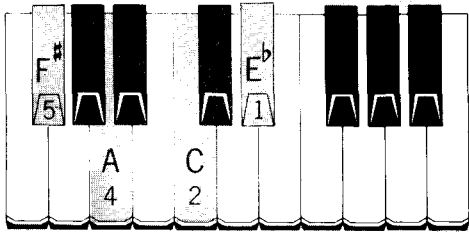
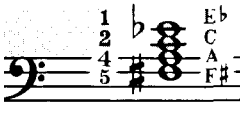
**F# 7#5 or F# 7(+5)**  
(F# seventh with raised fifth)

**BASS NOTES** -fundamental F# /alternate D

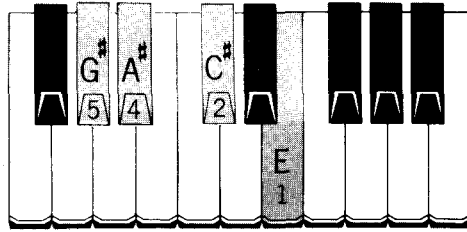
# F#

## F#<sup>dim</sup> 7 or F#<sup>o</sup>7

F# diminished seventh



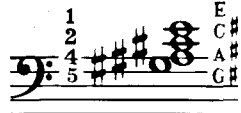
**BASS NOTES** - fundamental F# /alternate C



**BASS NOTES** - fundamental F# /alternate C#

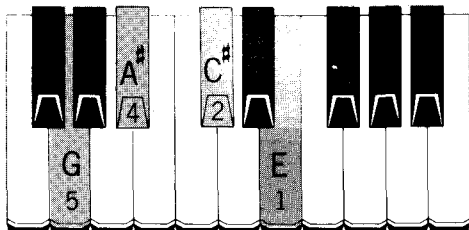
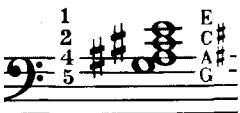
## F#<sup>9</sup>

(F# ninth)

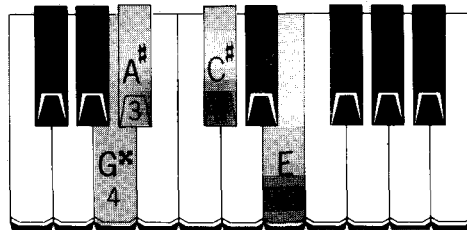


## F#7<sup>b9</sup> or F#7(-9)

F# seventh plus flatted ninth



**BASS NOTES** - fundamental F# /alternate C#



**BASS NOTES** - fundamental F# /alternate C#

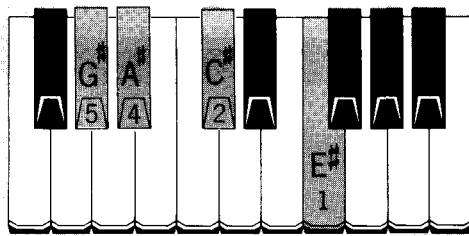
## F#7<sup>#9</sup> or F#7(+9)

(F# seventh plus raised ninth)

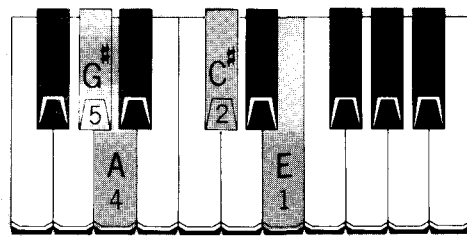


## F#<sup>M</sup> 7 add 9

F# major seventh with added ninth



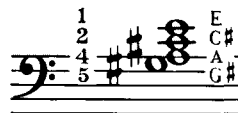
**BASS NOTES** - fundamental F# /alternate C#



**BASS NOTES** - fundamental F# /alternate C#

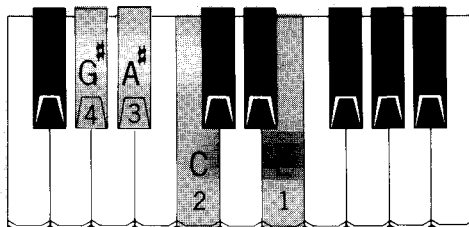
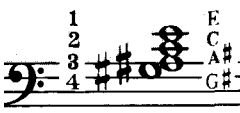
## F#<sup>m</sup> 7 add 9

(F# minor seventh with added ninth)

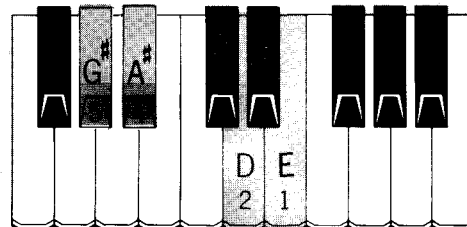


## F#9<sup>b5</sup> or F#9(-5)

F# ninth with flatted fifth



**BASS NOTES** - fundamental F# /alternate C



**BASS NOTES** - fundamental F# /alternate D

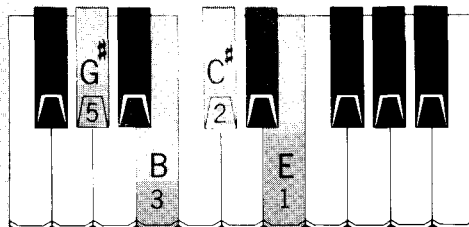
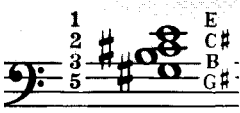
## F#9<sup>#5</sup> or F#9(+5)

(F# ninth with raised fifth)

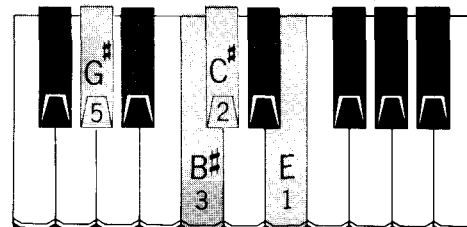


## F#<sup>11</sup>

F# eleventh



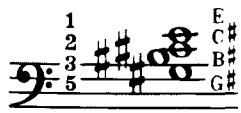
**BASS NOTES** - fundamental F# /alternate C#



**BASS NOTES** - fundamental F# /alternate C#

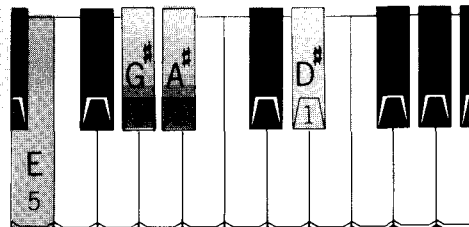
## F#<sup>aug</sup> 1

(F# augmented eleventh)

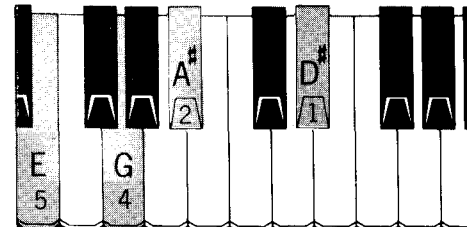


## F#<sup>13</sup>

F# thirteenth



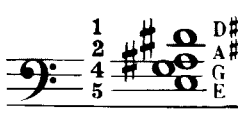
**BASS NOTES** - fundamental F# /alternate C#



**BASS NOTES** - fundamental F# /alternate C#

## F#<sup>13b9</sup> or F#<sup>13(-9)</sup>

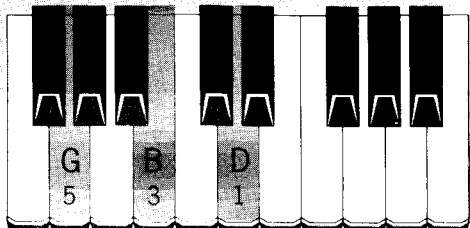
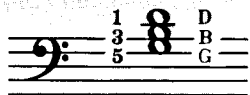
(F# thirteenth with flatted ninth)



# G

## G

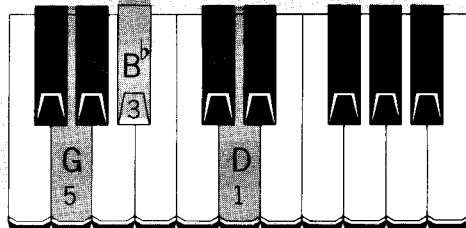
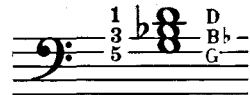
(G major)



**BASS NOTES** -fundamental G /alternate D

## Gm

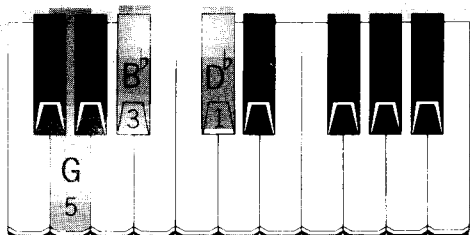
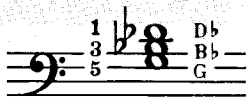
(G minor)



**BASS NOTES** -fundamental G /alternate D

## Gdim or G<sup>o</sup>

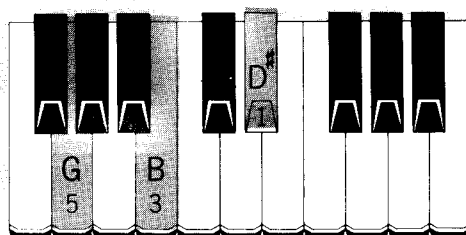
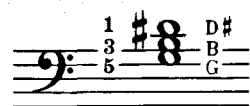
(G diminished)



**BASS NOTES** -fundamental G /alternate D<sup>b</sup>

## G aug or G<sup>+</sup>

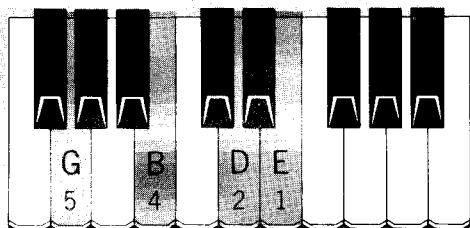
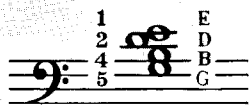
(G augmented)



**BASS NOTES** -fundamental G /alternate D<sup>#</sup>

## G<sup>6</sup>

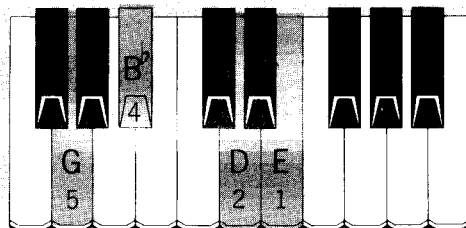
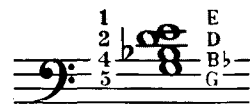
(G sixth)



**BASS NOTES** -fundamental G /alternate D

## Gm<sup>6</sup>

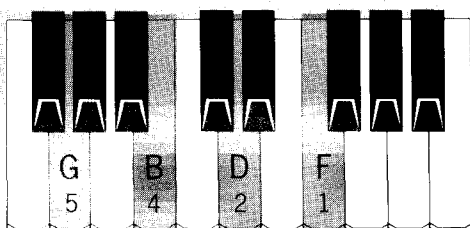
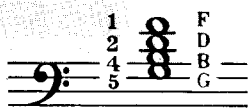
(G minor sixth)



**BASS NOTES** -fundamental G /alternate D

## G<sup>7</sup>

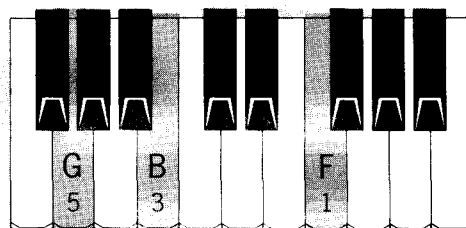
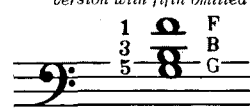
(G seventh)



**BASS NOTES** -fundamental G /alternate D

## G<sup>7</sup>

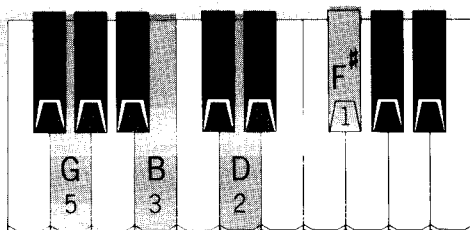
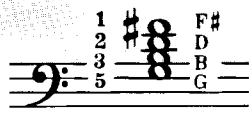
(G seventh) three note version with fifth omitted



**BASS NOTES** -fundamental G /alternate D

## GM<sup>7</sup>

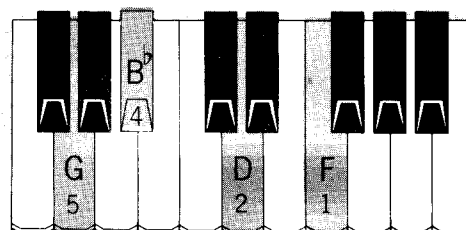
(G major seventh)



**BASS NOTES** -fundamental G /alternate D

## Gm<sup>7</sup>

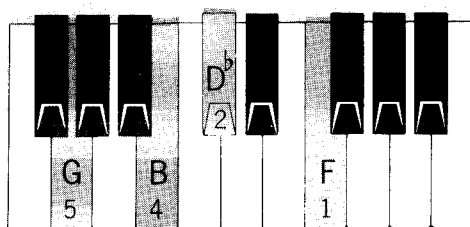
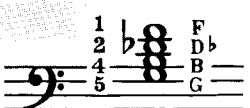
(G minor seventh)



**BASS NOTES** -fundamental G /alternate D

## G<sup>7b5</sup> or G<sup>7(-5)</sup>

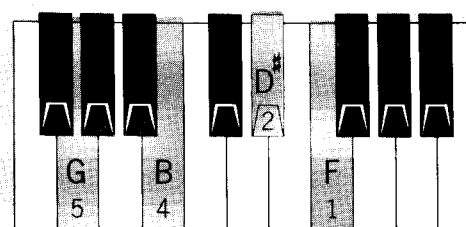
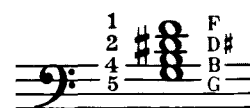
(G seventh with flatted fifth)



**BASS NOTES** -fundamental G /alternate D<sup>b</sup>

## G<sup>7#5</sup> or G<sup>7(+5)</sup>

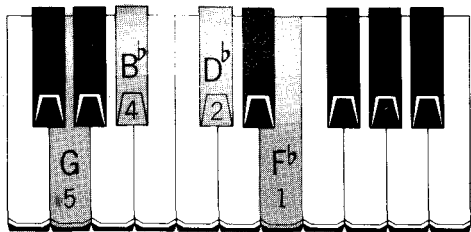
(G seventh with raised fifth)



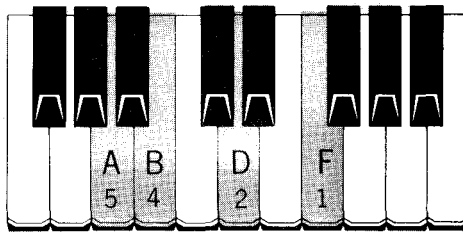
**BASS NOTES** -fundamental G /alternate D<sup>#</sup>

## G dim7 or G<sup>o7</sup>

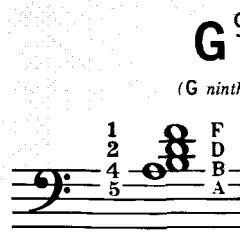
(G diminished seventh)



**BASS NOTES** -fundamental G /alternate D<sup>b</sup>



**BASS NOTES** -fundamental G /alternate D

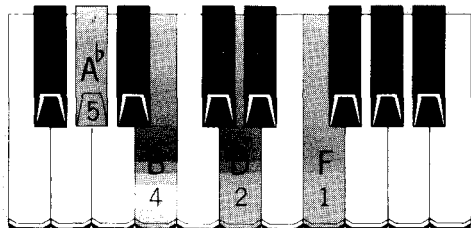


## G<sup>9</sup>

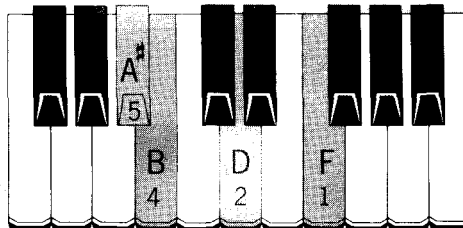
(G ninth)

## G 7<sup>b9</sup> or G 7(-9)

(G seventh plus flatted ninth)



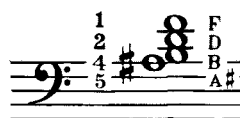
**BASS NOTES** -fundamental G /alternate D



**BASS NOTES** -fundamental G /alternate D

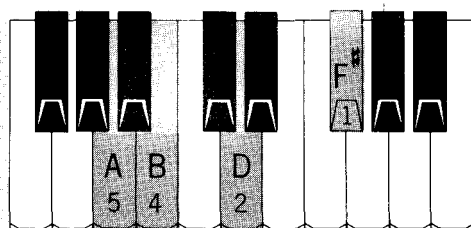
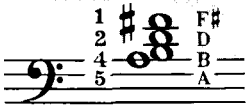
## G 7<sup>#9</sup> or G 7(+9)

(G seventh plus raised ninth)

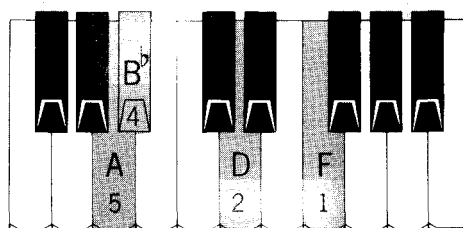


## G M<sup>7</sup> add<sup>9</sup>

(G major seventh with added ninth)



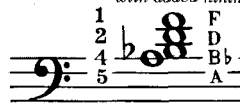
**BASS NOTES** -fundamental G /alternate D



**BASS NOTES** -fundamental G /alternate D

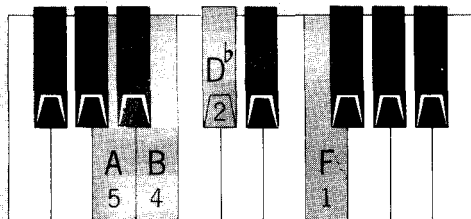
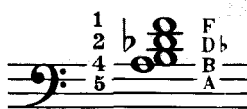
## G m<sup>7</sup> add<sup>9</sup>

(G minor seventh with added ninth)

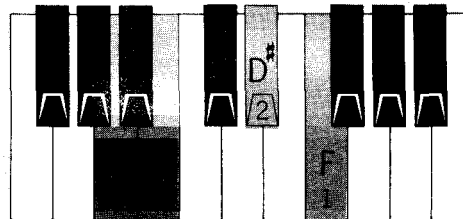


## G 9<sup>b5</sup> or G 9(-5)

(G ninth with flatted fifth)



**BASS NOTES** -fundamental G /alternate D<sup>b</sup>



**BASS NOTES** -fundamental G /alternate D<sup>#</sup>

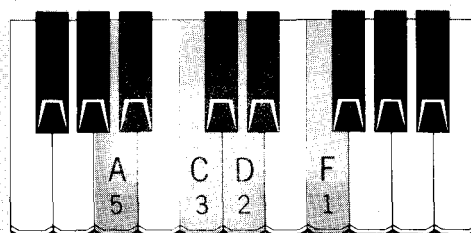
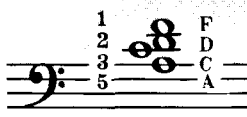
## G 9<sup>#5</sup> or G 9(+5)

(G ninth with raised fifth)

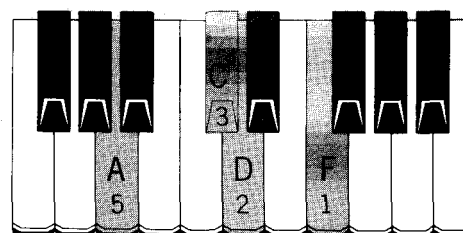


## G<sup>11</sup>

(G eleventh)



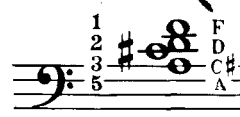
**BASS NOTES** -fundamental G /alternate D



**BASS NOTES** -fundamental G /alternate D

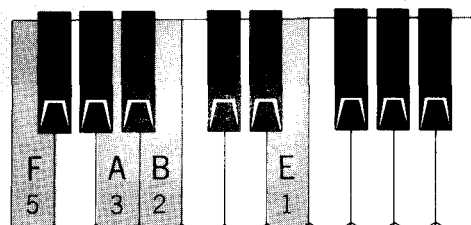
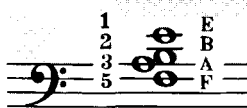
## G aug<sup>11</sup>

(G augmented elevent)

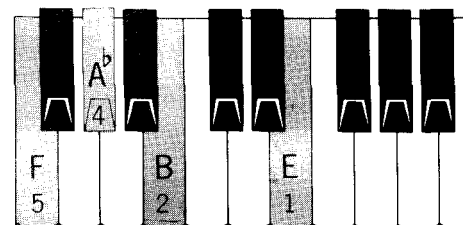


## G<sup>13</sup>

(G thirteenth)



**BASS NOTES** fundamental G /alternate D



**BASS NOTES** -fundamental G /alternate D

## G 13<sup>b9</sup> or G 13(-9)

(G thirteenth with flatted ninth)



**G<sup>b</sup>**  
(G<sup>b</sup> major)

**BASS NOTES** - fundamental G<sup>b</sup> / alternate D<sup>b</sup>

**BASS NOTES** - fundamental G<sup>b</sup> / alternate D<sup>b</sup>

**G<sup>b</sup> m**  
(G<sup>b</sup> minor)

**G<sup>b</sup> dim or G<sup>b</sup>0**  
(G<sup>b</sup> diminished)

**BASS NOTES** - fundamental G<sup>b</sup> / alternate C

**BASS NOTES** - fundamental G<sup>b</sup> / alternate D

**G<sup>b</sup> aug or G<sup>b</sup>+**  
(G<sup>b</sup> augmented)

**G<sup>b</sup>6**  
(G<sup>b</sup> sixth)

**BASS NOTES** - fundamental G<sup>b</sup> / alternate D<sup>b</sup>

**BASS NOTES** - fundamental G<sup>b</sup> / alternate D<sup>b</sup>

**G<sup>b</sup> m6**  
(G<sup>b</sup> minor sixth)

**G<sup>b</sup>7**  
(G<sup>b</sup> seventh)

**BASS NOTES** - fundamental G<sup>b</sup> / alternate D<sup>b</sup>

**BASS NOTES** - fundamental G<sup>b</sup> / alternate D<sup>b</sup>

**G<sup>b</sup>**  
(G<sup>b</sup> seventh) three note version with fifth omitted

**G<sup>b</sup> M7**  
(G<sup>b</sup> major seventh)

**BASS NOTES** - fundamental G<sup>b</sup> / alternate D<sup>b</sup>

**BASS NOTES** - fundamental G<sup>b</sup> / alternate D<sup>b</sup>

**G<sup>b</sup> m7**  
(G<sup>b</sup> minor seventh)

**G<sup>b</sup>7<sup>b</sup>5 or G<sup>b</sup>7(-5)**  
(G<sup>b</sup> seventh with flattened fifth)

**BASS NOTES** - fundamental G<sup>b</sup> / alternate C

**BASS NOTES** - fundamental G<sup>b</sup> / alternate D

**G<sup>b</sup>7<sup>#</sup>5 or G<sup>b</sup>7(+)**  
(G<sup>b</sup> seventh with raised fifth)

# G<sup>b</sup>

## G<sup>b</sup> dim<sup>7</sup> or G<sup>b</sup> o<sup>7</sup>

(G<sup>b</sup> diminished seventh)

**BASS NOTES** -fundamental G<sup>b</sup>/alternate C

**BASS NOTES** -fundamental G<sup>b</sup>/alternate D<sup>b</sup>

## G<sup>b</sup> 9

(G<sup>b</sup> ninth)

## G<sup>b</sup> 7<sup>b</sup>9 or G<sup>b</sup> 7(-9)

(G<sup>b</sup> seventh plus flatted ninth)

**BASS NOTES** -fundamental G<sup>b</sup> /alternate D<sup>b</sup>

**BASS NOTES** -fundamental G<sup>b</sup>/alternate D<sup>b</sup>

## G<sup>b</sup> 7<sup>#</sup>9 or G<sup>b</sup> 7(+9)

(G<sup>b</sup> seventh plus raised ninth)

## G<sup>b</sup> M<sup>7</sup> add<sup>9</sup>

(G<sup>b</sup> major seventh with added ninth)

**BASS NOTES** -fundamental G<sup>b</sup>/alternate D<sup>b</sup>

**BASS NOTES** -fundamental G<sup>b</sup>/alternate D<sup>b</sup>

## G<sup>b</sup> m<sup>7</sup> add<sup>9</sup>

(G<sup>b</sup> minor seventh with added ninth)

## G<sup>b</sup> 9<sup>b</sup>5 or G<sup>b</sup> 9(-5)

(G<sup>b</sup> ninth with flatted fifth)

**BASS NOTES** -fundamental G<sup>b</sup>/alternate C

**BASS NOTES** -fundamental G<sup>b</sup> /alternate D

## G<sup>b</sup> 9<sup>#</sup>5 or G<sup>b</sup> 9(+5)

(G<sup>b</sup> ninth with raised fifth)

## G<sup>b</sup> 11

(G<sup>b</sup> eleventh)

**BASS NOTES** -fundamental G<sup>b</sup> /alternate D<sup>b</sup>

**BASS NOTES** -fundamental G<sup>b</sup> /alternate D<sup>b</sup>

## G<sup>b</sup> aug<sup>11</sup>

(G<sup>b</sup> augmented eleventh)

## G<sup>b</sup> 13

(G<sup>b</sup> thirteenth)

**BASS NOTES** -fundamental G<sup>b</sup> /alternate D<sup>b</sup>

**BASS NOTES** -fundamental G<sup>b</sup> /alternate D<sup>b</sup>

## G<sup>b</sup> 13<sup>b</sup>9 or G<sup>b</sup> 13(-9)

(G<sup>b</sup> thirteenth with flatted ninth)

# CHORD CHART

## ANY KEY

<b>MAJOR</b> <b>CHORD</b> — 1•3•5 <b>BASS</b> — <i>fund. 1/alt. 5</i> <b>NOTES</b>	<b>MINOR</b> <b>CHORD</b> — 1•3 <sup>b</sup> •5 <b>BASS</b> — <i>fund. 1/alt. 5</i> <b>NOTES</b>
<b>DIMINISHED</b> <b>CHORD</b> — 1•3 <sup>b</sup> •5 <sup>b</sup> <b>BASS</b> — <i>fund. 1/alt. 5<sup>b</sup></i> <b>NOTES</b>	<b>AUGMENTED</b> <b>CHORD</b> — 1•3•5 <sup>#</sup> <b>BASS</b> — <i>fund. 1/alt. 5<sup>#</sup></i> <b>NOTES</b>
<b>SIXTH</b> <b>CHORD</b> — 1•3•5•6 <b>BASS</b> — <i>fund. 1/alt. 5</i> <b>NOTES</b>	<b>MINOR SIXTH</b> <b>CHORD</b> — 1•3 <sup>b</sup> •5•6 <b>BASS</b> — <i>fund. 1/alt. 5</i> <b>NOTES</b>
<b>SEVENTH</b> <b>CHORD</b> — 1•3•5•7 <sup>b</sup> <b>BASS</b> — <i>fund. 1/alt. 5</i> <b>NOTES</b>	<b>SEVENTH with fifth omitted</b> <b>CHORD</b> — 1•3•7 <sup>b</sup> <b>BASS</b> — <i>fund. 1/alt. 5</i> <b>NOTES</b>
<b>MAJOR SEVENTH</b> <b>CHORD</b> — 1•3•5•7 <b>BASS</b> — <i>fund. 1/alt. 5</i> <b>NOTES</b>	<b>MINOR SEVENTH</b> <b>CHORD</b> — 1•3 <sup>b</sup> •5•7 <sup>b</sup> <b>BASS</b> — <i>fund. 1/alt. 5</i> <b>NOTES</b>
<b>SEVENTH with flatted fifth</b> <b>CHORD</b> — 1•3•5 <sup>b</sup> •7 <sup>b</sup> <b>BASS</b> — <i>fund. 1/alt. 5<sup>b</sup></i> <b>NOTES</b>	<b>SEVENTH with raised fifth</b> <b>CHORD</b> — 1•3•5 <sup>#</sup> •7 <sup>b</sup> <b>BASS</b> — <i>fund. 1/alt. 5<sup>#</sup></i> <b>NOTES</b>

## ANY KEY

<b>DIMINISHED SEVENTH</b> <b>CHORD</b> — 1•3 <sup>b</sup> •5 <sup>b</sup> •7 <sup>bb</sup> <b>BASS</b> — <i>fund. 1/alt. 5<sup>b</sup></i> <b>NOTES</b>	<b>NINTH</b> <b>CHORD</b> — 3•5•7 <sup>b</sup> •9 <b>BASS</b> — <i>fund. 1/alt. 5</i> <b>NOTES</b>
<b>SEVENTH plus flatted ninth</b> <b>CHORD</b> — 3•5•7 <sup>b</sup> •9 <sup>b</sup> <b>BASS</b> — <i>fund. 1/alt. 5</i> <b>NOTES</b>	<b>SEVENTH plus raised ninth</b> <b>CHORD</b> — 3•5•7 <sup>b</sup> •9 <sup>#</sup> <b>BASS</b> — <i>fund. 1/alt. 5</i> <b>NOTES</b>
<b>MAJOR SEVENTH with added ninth</b> <b>CHORD</b> — 3•5•7•9 <b>BASS</b> — <i>fund. 1/alt. 5</i> <b>NOTES</b>	<b>MINOR SEVENTH with added ninth</b> <b>CHORD</b> — 3 <sup>b</sup> •5•7 <sup>b</sup> •9 <b>BASS</b> — <i>fund. 1/alt. 5</i> <b>NOTES</b>
<b>NINTH with flatted fifth</b> <b>CHORD</b> — 3•5 <sup>b</sup> •7 <sup>b</sup> •9 <b>BASS</b> — <i>fund. 1/alt. 5<sup>b</sup></i> <b>NOTES</b>	<b>NINTH with raised fifth</b> <b>CHORD</b> — 3•5 <sup>#</sup> •7 <sup>b</sup> •9 <b>BASS</b> — <i>fund. 1/alt. 5</i> <b>NOTES</b>
<b>ELEVENTH</b> <b>CHORD</b> — 5•7 <sup>b</sup> •9•11 <b>BASS</b> — <i>fund. 1/alt. 5</i> <b>NOTES</b>	<b>AUGMENTED ELEVENTH</b> <b>CHORD</b> — 5•7 <sup>b</sup> •9•11 <sup>#</sup> <b>BASS</b> — <i>fund. 1/alt. 5</i> <b>NOTES</b>
<b>THIRTEENTH</b> <b>CHORD</b> — 7 <sup>b</sup> •9•10•13 <b>BASS</b> — <i>fund. 1/alt. 5</i> <b>NOTES</b>	<b>THIRTEENTH with flatted ninth</b> <b>CHORD</b> — 7 <sup>b</sup> •9 <sup>b</sup> •10•13 <b>BASS</b> — <i>fund. 1/alt. 5</i> <b>NOTES</b>

## How to use the CHARTS

All chords are formed by combining certain scale tones according to definite rules. For example, any Major Chord is formed by combining the 1st, 3rd and 5th tones of the Major Scale. (See the chart above, under "MAJOR" and opposite "CHORD".)

By applying this rule to the Major Scale Chart on the following page, you will see that the 1st, 3rd and 5th notes of the A Major Scale are A, C<sup>#</sup> and E, respectively. Thus the A Major Chord consists of the notes A, C<sup>#</sup> and E.

By using the Chord Chart above, together with the Major Scale Chart on the following page, the notes of any chord contained in this book may be quickly determined.

Note that the Fundamental Bass Note is *always* the root (1) of the chord. The Alternating Bass Note is *always* the 5th, but it may be lowered or raised  $\frac{1}{2}$  step, to correspond with the 5th used in its particular chord.



# MAJOR SCALE CHART

	1	2	3	4	5	6	7	8	9	10	11	12	13
<b>A</b>	A	B	C <sup>#</sup>	D	E	F <sup>#</sup>	G <sup>#</sup>	A	B	C <sup>#</sup>	D	E	F <sup>#</sup>
<b>A<sup>b</sup></b>	A <sup>b</sup>	B <sup>b</sup>	C	D <sup>b</sup>	E <sup>b</sup>	F	G	A <sup>b</sup>	B <sup>b</sup>	C	D <sup>b</sup>	E <sup>b</sup>	F
<b>B</b>	B	C <sup>#</sup>	D <sup>#</sup>	E	F <sup>#</sup>	G <sup>#</sup>	A <sup>#</sup>	B	C <sup>#</sup>	D <sup>#</sup>	E	F <sup>#</sup>	G <sup>#</sup>
<b>B<sup>b</sup></b>	B <sup>b</sup>	C	D	E <sup>b</sup>	F	G	A	B <sup>b</sup>	C	D	E <sup>b</sup>	F	G
<b>C</b>	C	D	E	F	G	A	B	C	D	E	F	G	A
<b>C<sup>#</sup></b>	C <sup>#</sup>	D <sup>#</sup>	E <sup>#</sup>	F <sup>#</sup>	G <sup>#</sup>	A <sup>#</sup>	B <sup>#</sup>	C <sup>#</sup>	D <sup>#</sup>	E <sup>#</sup>	F <sup>#</sup>	G <sup>#</sup>	A <sup>#</sup>
<b>D</b>	D	E	F <sup>#</sup>	G	A	B	C <sup>#</sup>	D	E	F <sup>#</sup>	G	A	B
<b>D<sup>b</sup></b>	D <sup>b</sup>	E <sup>b</sup>	F	G <sup>b</sup>	A <sup>b</sup>	B <sup>b</sup>	C	D <sup>b</sup>	E <sup>b</sup>	F	G <sup>b</sup>	A <sup>b</sup>	B <sup>b</sup>
<b>E</b>	E	F <sup>#</sup>	G <sup>#</sup>	A	B	C <sup>#</sup>	D <sup>#</sup>	E	F <sup>#</sup>	G <sup>#</sup>	A	B	C <sup>#</sup>
<b>E<sup>b</sup></b>	E <sup>b</sup>	F	G	A <sup>b</sup>	B <sup>b</sup>	C	D	E <sup>b</sup>	F	G	A <sup>b</sup>	B <sup>b</sup>	C
<b>F</b>	F	G	A	B <sup>b</sup>	C	D	E	F	G	A	B <sup>b</sup>	C	D
<b>F<sup>#</sup></b>	F <sup>#</sup>	G <sup>#</sup>	A <sup>#</sup>	B	C <sup>#</sup>	D <sup>#</sup>	E <sup>#</sup>	F <sup>#</sup>	G <sup>#</sup>	A <sup>#</sup>	B	C <sup>#</sup>	D <sup>#</sup>
<b>G</b>	G	A	B	C	D	E	F <sup>#</sup>	G	A	B	C	D	E
<b>G<sup>b</sup></b>	G <sup>b</sup>	A <sup>b</sup>	B <sup>b</sup>	C <sup>b</sup>	D <sup>b</sup>	E <sup>b</sup>	F	G <sup>b</sup>	A <sup>b</sup>	B <sup>b</sup>	C <sup>b</sup>	D <sup>b</sup>	E <sup>b</sup>



# About CHORD POSITIONS

Any chord may be played in many different positions on the piano.

*For example, the A Major Chord, which consists of the Notes A, C# and E, may be played in all of the following positions:*



Since each of the above chords contains only the notes A, C#, and E, each chord is called an A Major Chord, regardless of its position. When the root note (A) is the lowest note of the chord, the chord is said to be in the "root position". If the root note is the upper note, it is said to be in the "first inversion". If the root note is the note just below the upper note, the chord is in the "second inversion".

In using chords to accompany a melody, it is important to choose positions that are neither too high nor too low.

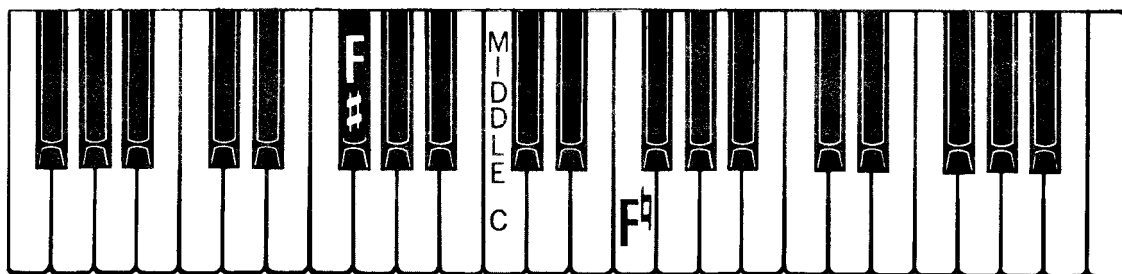
If the position of the chord is too low, the sound will be thick, or "muddy".

If the position of the chord is too high, the sound will resemble a "merry-go-round" or calliope, when the chord is used rhythmically. If it is used for sustained accompaniment, it may interfere with the audibility of the melody.

The chord should be played in such a position that it will fill the gap between the melody and the bass. It will usually sound best in the Central Register.

*For this reason, the best position of a left hand chord used to accompany a melody lies between F# (Middle C in between) and F#.*

## FIT CHORD INTO THIS AREA



**ALL OF THE CHORDS IN THE REFERENCE SECTION OF THIS BOOK ARE SHOWN IN POSITIONS THAT FIT INTO THIS PORTION OF THE PIANO KEYBOARD.**

*(One or two notes leeway in either direction is permitted in some cases, to insure the best chord progressions.)*

## The AUGMENTED and DIMINISHED SEVENTH CHORDS

The Augmented Chord and the Diminished Seventh Chord are symmetrical in construction. That is, they have the same interval between each note. When these chords are inverted they can then be considered as becoming chords in root position, with the lower note as the new root. This will explain why the Augmented Chord of B is the same as the Augmented Chord of G,

when it is placed in the keyboard range suggested above. For the same reason, the G Diminished Seventh and the B6 Diminished Seventh are identical chords for the left hand. The bass notes, however, are different, and since they represent the lowest or root note of the chord, they are the final determining factor that give such chords their name.

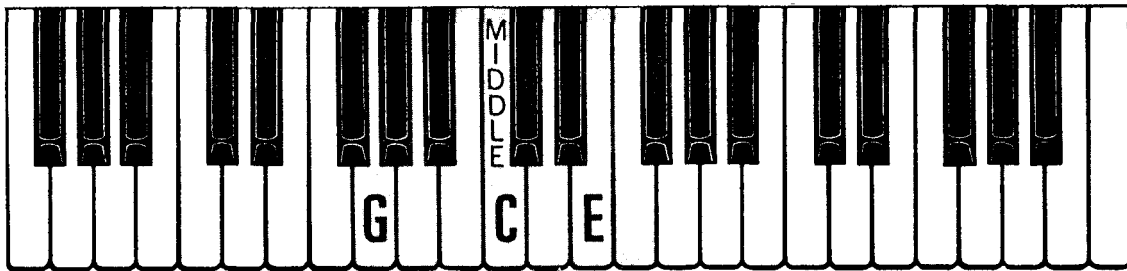
ONCE THE CORRECT NOTES OF A GIVEN CHORD ARE DETERMINED, IT IS A SIMPLE MATTER TO FIT THEM INTO THE SUGGESTED RANGE.

*For example:* Determine the notes and the correct position of the C Major Chord. Referring to the CHORD CHART on page 30, we see that the CHORD NOTES are the 1st, 3rd and 5th tones of the scale. Referring to the MAJOR SCALE CHART on page 31, we see that

the 1st, 3rd and 5th notes of the scale are C, E and G.

We then see that it will be necessary to place the G below the C and the E, in order to fit the chord into the *suggested* range:

FIT CHORD INTO THIS AREA



Because these chords are all played within a small range of keys, left hand motion is minimized and better chord progressions result.

The advantage of using chord positions that fit into one general area for the left hand is clearly shown in the following example:

THE BASIC "TURN AROUND" IS ONE OF THE MOST COMMON CHORD SEQUENCES TO BE FOUND IN POPULAR MUSIC.

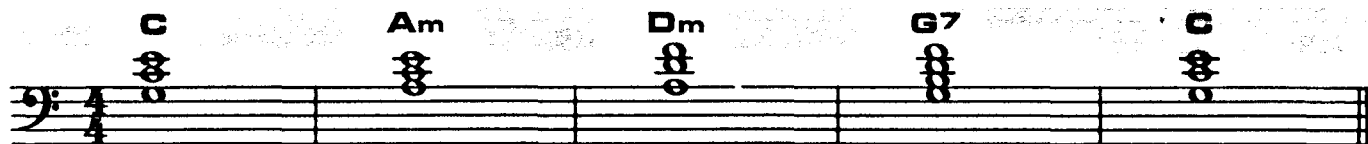
IN THE KEY OF C MAJOR, THE TURN AROUND WOULD BE PLAYED LIKE THIS, IF ALL CHORDS WERE PLAYED IN ROOT POSITION:



THE TURN AROUND WOULD BE PLAYED LIKE THIS, IF THE CHORD POSITIONS WERE DETERMINED BY POINTING TO THE ROOT OF THE CHORD WITH THE INDEX FINGER:



THE TURN AROUND IS PLAYED LIKE THIS, WHEN THE POSITIONS SHOWN IN THIS BOOK ARE USED:



The latter system is much the simplest, because the long jumps made by the left hand in the other two examples are eliminated. The chord progressions are smoother and more pleasing to the ear. The voice-leadings are harmonically correct, and the results are much more professional in quality.

# "POP" PROGRESSIONS SECTION

The following 15 pages of "POP" PROGRESSIONS cover the most commonly used chord progressions (sequence of chords) heard in Popular Music. Whatever kind of music you like, you will find several progressions representing the different STYLES of FOLK, COUNTRY, DIXIELAND, GOSPEL, ROCK (Light, Medium and Heavy) and POPULAR BALLADS.

The chords for each "POP" PROGRESSION are shown for the LEFT HAND,  $\text{bass clef}$  (BASS CLEF), and for the RIGHT HAND,  $\text{treble clef}$  (TREBLE CLEF).

Using the chords shown for the LEFT HAND will teach you how to play a "POP" PROGRESSION or "POP" SONG as a PIANO SOLO.

Using the chords shown for the RIGHT HAND will teach you how to ACCOMPANY yourself when singing and how to play an ACCOMPANIMENT when playing in a group. When playing this style, use your left hand to play the fundamental and alternate bass notes in octaves while playing the chords in your right hand.

## CHORDS FOR "POP" PROGRESSION 1

<b>L E F T</b>	<p>C</p> <p>F.B. C/A.B.G</p>	<p>C7</p> <p>F.B. C/A.B.G</p>	<b>R I G H T</b>	<p>C</p> <p>F.B. C/A.B.G</p>	<p>C7</p> <p>F.B. C/A.B.G</p>
<b>H A N D</b>	<p>F</p> <p>F.B. F/A.B.C</p>	<p>G7</p> <p>F.B. G/A.B.D</p>	<b>H A N D</b>	<p>F</p> <p>F.B. F/A.B.C</p>	<p>G7</p> <p>F.B. G/A.B.D</p>

## HOW TO READ and PLAY "POP" PROGRESSION MUSIC

1. PLAY THE INDICATED CHORD (C, C7, F or G7) ONCE FOR EACH HASH MARK.////
2. PLAY THE FUNDAMENTAL BASS NOTE WHEN THE ABBREVIATION F. B. IS WRITTEN UNDER THE HASH MARK.
3. PLAY THE ALTERNATE BASS NOTE WHEN THE ABBREVIATION A. B. IS WRITTEN UNDER THE HASH MARK.
4. CONTINUE PLAYING THE INDICATED CHORD WHEN NO BASS NOTE IS WRITTEN UNDER THE HASH MARK.

### "POP" PROGRESSION 1 (FOLK BLUES)

Moderately Slow

C				C7
F.B.	F.B.	F.B.	A.B.	F.B.
F				C
F.B.	F.B.	F.B.	F.B.	
G7	F	C		
F.B.	F.B.	F.B.	A.B.	F.B.

# CHORDS FOR "POP" PROGRESSION 2

**LEFT HAND**

**D** 1 3 3 5 5 8 8 F# F#

F.B.D/A.B.A

**G** 1 3 3 5 5 8 8 D B C

F.B.G/A.B.D

**RIGHT HAND**

**D** 5 5 8 8 A A F# F#

F.B.D/A.B.A

**G** 5 5 8 8 D B G

F.B.G/A.B.D

**HAND**

**A7** 1 3 3 5 5 8 8 C# G

F.B.A/A.B.E

**E7** 1 2 2 4 4 8 8 E D G#

F.B.E/A.B.B

**HAND**

**A7** 4 4 8 8 G# G

F.B.A/A.B.E

**E7** 5 5 8 8 E D G#

F.B.E/A.B.B

## "POP" PROGRESSION 2 (COUNTRY)

Moderately Fast

<b>D</b> F.B.	<b>G</b> A.B.	<b>D</b> F.B.	<b>G</b> A.B.
<b>A7</b> F.B.	<b>D</b> A.B.	<b>D</b> F.B.	<b>D</b> A.B.
<b>D</b> F.B.	<b>G</b> A.B.	<b>G</b> F.B.	<b>G</b> A.B.
<b>A7</b> F.B.	<b>D</b> A.B.	<b>D</b> F.B.	<b>D</b> A.B.
<b>G</b> F.B.	<b>D</b> A.B.	<b>D</b> F.B.	<b>D</b> A.B.
<b>E7</b> F.B.	<b>A7</b> A.B.	<b>A7</b> F.B.	<b>A7</b> A.B.
<b>D</b> F.B.	<b>G</b> A.B.	<b>G</b> F.B.	<b>G</b> A.B.
<b>A7</b> F.B.	<b>D</b> A.B.	<b>D</b> F.B.	<b>D</b> A.B.

# CHORDS FOR "POP" PROGRESSION 3

## LEFT HAND

G  $\begin{matrix} 1 \\ 3 \\ 5 \end{matrix}$   $\begin{matrix} D \\ B \\ G \end{matrix}$   
  
 F.B. G/A.B.D

C  $\begin{matrix} 1 \\ 2 \\ 5 \end{matrix}$   $\begin{matrix} E \\ C \\ G \end{matrix}$   
  
 F.B. C/A.B.G

D7  $\begin{matrix} 2 \\ 5 \end{matrix}$   $\begin{matrix} D \\ C \\ F\# \end{matrix}$   
  
 F.B. D/A.B.A

Bm  $\begin{matrix} 1 \\ 3 \\ 5 \end{matrix}$   $\begin{matrix} D \\ B \\ F\# \end{matrix}$   
  
 F.B. B/A.B.F#

Am  $\begin{matrix} 1 \\ 2 \\ 4 \end{matrix}$   $\begin{matrix} E \\ C \\ A \end{matrix}$   
  
 F.B. A/A.B.E

## RIGHT HAND

G  $\begin{matrix} 4 \\ 2 \\ 1 \end{matrix}$   $\begin{matrix} D \\ B \\ G \end{matrix}$   
  
 F.B. G/A.B.D

C  $\begin{matrix} 5 \\ 3 \\ 1 \end{matrix}$   $\begin{matrix} E \\ C \\ G \end{matrix}$   
  
 F.B. C/A.B.G

D7  $\begin{matrix} 4 \\ 3 \\ 1 \end{matrix}$   $\begin{matrix} D \\ C \\ F\# \end{matrix}$   
  
 F.B. D/A.B.A

Bm  $\begin{matrix} 4 \\ 2 \\ 1 \end{matrix}$   $\begin{matrix} D \\ B \\ F\# \end{matrix}$   
  
 F.B. B/A.B.F#

Am  $\begin{matrix} 5 \\ 3 \\ 1 \end{matrix}$   $\begin{matrix} E \\ C \\ A \end{matrix}$   
  
 F.B. A/A.B.E

# "POP" PROGRESSION 3 (GOSPEL)

Brightly

G	C	D7	G	
F.B.	F.B.	F.B.	F.B.	
Bm	C	D7	G	
F.B.	F.B.	F.B.	F.B.	
G	C	D7	G	
F.B.	F.B.	F.B.	F.B.	
G	C	D7	G	
F.B.	F.B.	F.B.	F.B.	
G	Am	Bm	Am	G
F.B.	F.B.	F.B.	F.B.	F.B.
G	Am	Bm	Am	G
F.B.	F.B.	F.B.	F.B.	F.B.
G	C	D7	G	
F.B.	F.B.	F.B.	F.B.	
G	C	D7	G	
F.B.	F.B.	F.B.	F.B.	

# CHORDS FOR "POP" PROGRESSION 4

## LEFT HAND

F  $\frac{1}{2}$   $\frac{4}{8}$  A

F.B. F/A.B.C

Dm  $\frac{1}{2}$   $\frac{4}{8}$  A

F.B. D/A.B.A

Bb  $\frac{1}{2}$   $\frac{4}{8}$  Bb

F.B. Bb/A.B.F

C7  $\frac{1}{2}$   $\frac{4}{8}$  Bb

F.B. C/A.B.G

Gm  $\frac{1}{2}$   $\frac{4}{8}$  G

F.B. G/A.B.D

Am  $\frac{1}{2}$   $\frac{4}{8}$  A

F.B. A/A.B.E

## RIGHT HAND

F  $\frac{5}{8}$   $\frac{4}{8}$  A

F.B. F/A.B.C

Dm  $\frac{5}{8}$   $\frac{4}{8}$  A

F.B. D/A.B.A

Bb  $\frac{5}{8}$   $\frac{4}{8}$  Bb

F.B. Bb/A.B.F

C7  $\frac{4}{8}$   $\frac{4}{8}$  Bb

F.B. C/A.B.G

Gm  $\frac{5}{8}$   $\frac{4}{8}$  G

F.B. G/A.B.D

Am  $\frac{4}{8}$   $\frac{4}{8}$  A

F.B. A/A.B.E

## "POP" PROGRESSION 4 (LIGHT ROCK)

Moderately Slow

F	Dm	Bb	C7
F.B.	F.B.	F.B.	F.B.
F	Dm	Gm C7	F
F.B.	F.B.	F.B. F.B.	F.B.
F	Dm	Bb	C7
F.B.	F.B.	F.B.	F.B.
F	Dm	Gm C7	F
F.B.	F.B.	F.B. A.B.	F.B.
Bb	Am	Gm	F
F.B.	F.B.	F.B.	F.B.
Bb	Am	Gm	F
F.B.	F.B.	F.B.	F.B. A.B.
F	Dm	Bb	C7
F.B.	F.B.	F.B.	F.B.
F	Dm	Gm C7	F
F.B.	F.B.	F.B. A.B.	F.B.

# CHORDS FOR "POP" PROGRESSION 5

## LEFT HAND

F.B.F/A.B.C

F.B. C/A.B.G

F.B.F/A.B.C

F.B. Bb/A.B.F

F.B. Bb/A.B.F

## RIGHT HAND

F.B.F/A.B.C

F.B. C/A.B.G

F.B.F/A.B.C

F.B. Bb/A.B.F

F.B. Bb/A.B.F

# "POP" PROGRESSION 5

(FAST FOLK)

"Foot Stompin'" Speed (Very Fast!)

F  
F.B. F.B. A.B. F.B. F.B. A.B.

F C7  
F.B. F.B. A.B. A.B. F.B. A.B.

F F7 Bb Bbm  
F.B. F.B. A.B. F.B. F.B. F.B.

F C7 F  
F.B. F.B. F.B. F.B.

F  
F.B. A.B. F.B. F.B. A.B. F.B.

F C7  
F.B. A.B. F.B. F.B. A.B. F.B.

F F7 Bb Bbm  
F.B. A.B. F.B. F.B. A.B. F.B.

F C7 F  
F.B. A.B. A.B. F.B. F.B. A.B. F.B.

# CHORDS FOR "POP" PROGRESSION 6

## LEFT HAND

F.B. C/A.B.G	F.B. C/A.B.G	F.B. F/A.B.C	F.B. F/A.B.C	F.B. Eb/A.B.Bb	F.B. G/A.B.D

## RIGHT HAND

F.B. C/A.B.G	F.B. C/A.B.G	F.B. F/A.B.C	F.B. F/A.B.C	F.B. Eb/A.B.Bb	F.B. G/A.B.D

# "POP" PROGRESSION 6

(SLOW "POP" BALLAD)

Slowly




# CHORDS FOR "POP" PROGRESSION 7

## LEFT HAND

C6   
F.B. C/A.B.G

Cm7   
F.B. C/A.B.G

Dm7   
F.B. D/A.B.A

G   
F.B. G/A.B.D

G7   
F.B. G/A.B.D

F   
F.B. F/A.B.C

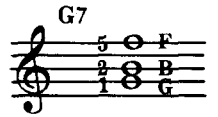
## RIGHT HAND

C6   
F.B. C/A.B.G

Cm7   
F.B. C/A.B.G

Dm7   
F.B. D/A.B.A

G   
F.B. G/A.B.D

G7   
F.B. G/A.B.D

F   
F.B. F/A.B.C

## "POP" PROGRESSION 7 (MEDIUM "POP" BALLAD)

Moderately Fast

C6	CM7	Dm7	
F.B.	F.B.	F.B.	F.B. A.B.
G	G7		C6
F.B.	F.B.	F.B. A.B.	F.B.
C6	CM7	Dm7	
F.B.	F.B.	F.B.	F.B. A.B.
G	G7		C6
F.B.	F.B.	F.B. A.B.	F.B.
F	G7	C6	
F.B. F.B.	F.B.	F.B. A.B.	F.B. A.B.
F	G7	C6	
F.B.	F.B.	F.B. A.B.	F.B. A.B.
C	CM7	Dm7	
F.B.	F.B.	F.B.	F.B. A.B.
G	G7		C6
F.B.	F.B.	F.B. A.B.	F.B.

# CHORDS FOR "POP" PROGRESSION 8

## LEFT HAND

C6  $\frac{1}{2}$   $\frac{1}{4}$   $\frac{1}{5}$  E C A G

F.B. C/A.B.G

CM7  $\frac{1}{2}$   $\frac{1}{4}$   $\frac{1}{5}$  E C B G

F.B. C/A.B.G

C7  $\frac{1}{2}$   $\frac{1}{4}$   $\frac{1}{5}$  E C B G

F.B. C/A.B.G

C7b9  $\frac{1}{2}$   $\frac{1}{4}$   $\frac{1}{5}$  E D $\flat$  B $\flat$  G

F.B. C/A.B.G

F6  $\frac{1}{2}$   $\frac{1}{4}$   $\frac{1}{5}$  F D C A

F.B. F/A.B.C

Fm6  $\frac{1}{2}$   $\frac{1}{4}$   $\frac{1}{5}$  F D C A $\flat$

F.B. F/A.B.C

D9  $\frac{1}{2}$   $\frac{1}{4}$   $\frac{1}{5}$  E C A G F#

F.B. D/A.B.A

G7b9  $\frac{1}{2}$   $\frac{1}{4}$   $\frac{1}{5}$  F D B $\flat$  A $\flat$

F.B. G/A.B.D

## RIGHT HAND

C6  $\frac{1}{2}$   $\frac{1}{4}$   $\frac{1}{5}$  E C A G

F.B. C/A.B.G

CM7  $\frac{1}{2}$   $\frac{1}{4}$   $\frac{1}{5}$  E C B G

F.B. C/A.B.G

C7  $\frac{1}{2}$   $\frac{1}{4}$   $\frac{1}{5}$  E C B G

F.B. C/A.B.G

C7b9  $\frac{1}{2}$   $\frac{1}{4}$   $\frac{1}{5}$  E D $\flat$  B $\flat$  G

F.B. C/A.B.G

F6  $\frac{1}{2}$   $\frac{1}{4}$   $\frac{1}{5}$  F D C A

F.B. F/A.B.C

Fm6  $\frac{1}{2}$   $\frac{1}{4}$   $\frac{1}{5}$  F D C A $\flat$

F.B. F/A.B.C

D9  $\frac{1}{2}$   $\frac{1}{4}$   $\frac{1}{5}$  E C A G F#

F.B. D/A.B.A

G7b9  $\frac{1}{2}$   $\frac{1}{4}$   $\frac{1}{5}$  F D B $\flat$  A $\flat$

F.B. G/A.B.D

# "POP" PROGRESSION 8 (MEDIUM ROCK)

Moderately Fast

C6	CM7	C7	C7b9
F.B.	F.B.	F.B.	F.B.
F6	Fm6	Fm6	Fm6
F.B.	F.B.	F.B.	F.B.
C6	D9	D9	D9
F.B.	F.B.	F.B.	F.B.
Fm6	G7b9	C6	C6
F.B.	F.B.	F.B.	F.B. <i>Fine</i>
Fm6	F6	G7b9	C6
F.B.	F.B.	F.B.	F.B.
Fm6	F6	G7b9	C6
F.B.	F.B.	F.B.	F.B. <i>D.C. al Fine</i>

# CHORDS FOR "POP" PROGRESSION 9 & 10

## LEFT HAND

F  $\frac{1}{4}$   $\frac{0}{8}$  F C A

F.B. F/A.B.C

D7  $\frac{1}{2}$   $\frac{0}{8}$  D C F#

F.B. D/A.B.A

G7  $\frac{1}{3}$   $\frac{0}{8}$  F B G

F.B. G/A.B.D

C7  $\frac{1}{2}$   $\frac{0}{8}$  E C Bb

F.B. C/A.B.G

Bb  $\frac{1}{2}$   $\frac{0}{8}$  F D Bb

F.B. Bb/A.B.F

Gm  $\frac{1}{2}$   $\frac{0}{8}$  D Bb G

F.B. G/A.B.D

A7  $\frac{1}{3}$   $\frac{0}{8}$  C# G

F.B. A/A.B.E

Dm  $\frac{1}{3}$   $\frac{0}{8}$  D A F

F.B. D/A.B.A

## RIGHT HAND

F  $\frac{5}{2}$   $\frac{0}{8}$  F C A

F.B. F/A.B.C

D7  $\frac{5}{4}$   $\frac{0}{8}$  D C F#

F.B. D/A.B.A

G7  $\frac{5}{2}$   $\frac{0}{8}$  F B G

F.B. G/A.B.D

C7  $\frac{3}{2}$   $\frac{0}{8}$  E C Bb

F.B. C/A.B.G

Bb  $\frac{5}{3}$   $\frac{0}{8}$  F D Bb

F.B. Bb/A.B.F

Gm  $\frac{5}{2}$   $\frac{0}{8}$  D Bb G

F.B. D/A.B.A

A7  $\frac{4}{2}$   $\frac{0}{8}$  C# G

F.B. G/A.B.D

Dm  $\frac{5}{2}$   $\frac{0}{8}$  D A F

F.B. D/A.B.A

## "POP" PROGRESSION 9 (MEDIUM DIXIELAND)

### Moderately Fast

Gm	C7	Gm	C7	Gm	C7	Gm	C7
/ / / /		/ / / /		/ / / /		/ / / /	
F.B.	F.B.	F.B.	F.B.	F.B.	F.B.	F.B.	F.B.
F	C7	C7	Bb	F	Bb	F	
/ / / /		/ / / /		/ / / /		/ / / /	
F.B.	A.B.	A.B.	F.B.	F.B.	F.B.	F.B.	A.B.
Gm	C7	Gm	C7	Gm	C7	Gm	C7
/ / / /		/ / / /		/ / / /		/ / / /	
F.B.	F.B.	F.B.	F.B.	F.B.	F.B.	F.B.	F.B.
F	C7	C7	Bb	F	Bb	F	
/ / / /		/ / / /		/ / / /		/ / / /	
F.B.	A.B.	A.B.	F.B.	F.B.	F.B.	F.B.	A.B.

F		B $\flat$	
F.B.	A.B.	F.B.	A.B.
G7		C7	
F.B.	A.B.	F.B.	A.B.
Gm	C7	Gm	C7
F.B.	F.B.	F.B.	F.B.
F	C7	F	B $\flat$
F.B.	A.B.	A.B.	F.B.
F.B.	F.B.	F.B.	F.B.

## "POP" PROGRESSION 10

(BRIGHT DIXIELAND)

Brightly

F		D7		G7	
F.B.	A.B.	F.B.	A.B.	F.B.	A.B.
C7		F		F	
F.B.	A.B.	F.B.	A.B.	F.B.	A.B.
B $\flat$	Gm	F	D7	D7	
F.B.	A.B.	F.B.	A.B.	F.B.	A.B.
G7		C7		C7	
F.B.	A.B.	F.B.	A.B.	F.B.	A.B.
F	D7	G7	G7		
F.B.	A.B.	F.B.	A.B.	F.B.	A.B.
A7	Dm	Dm			
F.B.	A.B.	F.B.	A.B.	F.B.	A.B.
Dm	A7	Dm			
F.B.	A.B.	A.B.	F.B.	F.B.	A.B.
F	C7	F	B $\flat$	F	F
F.B.	A.B.	A.B.	F.B.	F.B.	A.B.

# CHORDS FOR "POP" PROGRESSION 11

## LEFT HAND

F.B.Eb/A.B.Bb

F.B.Eb/A.B.Bb

F.B.Ab/A.B.Eb

F.B.Bb/A.B.F

F.B.F/A.B.C

F.B.F/A.B.C

F.B.Bb/A.B.F

F.B.G/A.B.D

## RIGHT HAND

F.B.Eb/A.B.Bb

F.B.Eb/A.B.Bb

F.B.Ab/A.B.Eb

F.B.Bb/A.B.F

F.B.F/A.B.C

F.B.F/A.B.C

F.B.Bb/A.B.F

F.B.G/A.B.D

# "POP" PROGRESSION 11 (MEDIUM COUNTRY)

Moderately Slow

F.B.	F.B.	F.B.	F.B.	F.B.	F.B.	F.B.	A.B.
F.B.	F.B.	F.B.	F.B.	F.B.	F.B.	F.B.	A.B.
F.B.	F.B.	F.B.	F.B.	F.B.	F.B.	F.B.	F.B.
F.B.	F.B.	F.B.	A.B.	F.B.	F.B.	F.B.	A.B.
F.B.	F.B.	F.B.	F.B.				
F.B.	F.B.	F.B.	F.B.	F.B.	F.B.	F.B.	

# CHORDS FOR "POP" PROGRESSION 12

## LEFT HAND

G  $\frac{1}{3}$  8 D B G

F.B. G/A. B. D

D7  $\frac{1}{2}$  6 D C F#

F. B. D/A. B. A

Am7  $\frac{1}{2}$  4 E C A

F. B. A/A. B. E

C  $\frac{1}{2}$  5 E C G

F. B. C/A. B. G

Dm7  $\frac{1}{2}$  4 D C A F

F. B. D/A. B. A

G7  $\frac{1}{3}$  5 F B G

F. B. G/A. B. D

C#°7  $\frac{1}{4}$  4 E# C# G

F. B. C#/A. B. G

Em  $\frac{1}{3}$  5 E B G

F. B. E/A. B. B

A7  $\frac{1}{3}$  4 C# G

F. B. A/A. B. E

Cm  $\frac{1}{2}$  5 Eb C G

F. B. C/A. B. G

## RIGHT HAND

G  $\frac{5}{3}$  1 D B G

F. B. G/A. B. D

D7  $\frac{5}{4}$  1 D C F#

F. B. D/A. B. A

Am7  $\frac{5}{3}$  1 E C A

F. B. A/A. B. E

C  $\frac{5}{3}$  1 E C G

F. B. C/A. B. G

Dm7  $\frac{5}{4}$  1 D C A F

F. B. D/A. B. A

G7  $\frac{5}{3}$  1 F B G

F. B. G/A. B. D

C#°7  $\frac{5}{3}$  1 E# C# G

F. B. C#/A. B. G

Em  $\frac{5}{3}$  1 E B G

F. B. E/A. B. B

A7  $\frac{4}{2}$  1 C# G

F. B. A/A. B. E

Cm  $\frac{5}{3}$  1 Eb C G

F. B. C/A. B. G

# "POP" PROGRESSION 12 (GOSPEL)

Brightly

G	D7					
F. B.	F. B.	A. B.	A. B.	F. B.	F. B.	
Am7	D7		G	C	G	
F. B.	F. B.	A. B.	F. B.	F. B.	F. B.	
Dm7	G7		C	C#°7		
F. B.	F. B.	A. B.	F. B.	F. B.	F. B.	
G	Em	A7	D7	G	Cm	G
F. B.	F. B.	F. B.	F. B.	F. B.	F. B.	F. B.
Dm7	G7		C	C#°7		
F. B.	F. B.	A. B.	F. B.	F. B.	F. B.	
G	Em	A7	D7	G	Cm	G
F. B.	F. B.	F. B.	F. B.	F. B.	F. B.	F. B.

# CHORDS FOR "POP" PROGRESSION 13

## LEFT HAND

F.B.E/A.B.B

F.B.B/A.B.F#

F.B.E/A.B.B♭

F.B.F#/A.B.C#

F.B.B/A.B.F#

## RIGHT HAND

F.B.E/A.B.B

F.B.B/A.B.F#

F.B.E/A.B.B♭

F.B.F#/A.B.C#

F.B.B/A.B.F#

# "POP" PROGRESSION 13 (HEAVY ROCK)

Moderately Fast

E	Bm7	E	Bm7	E
F.B.	F.B.	F.B.	F.B.	F.B.
E	Bm7	E	Bm7	E
F.B.	F.B.	F.B.	F.B.	F.B.
E	Bm7	E	Bm7	E
F.B.	F.B.	F.B.	F.B.	F.B.
E	Bm7	E	Bm7	E
F.B.	F.B.	F.B.	F.B.	F.B.
E°7	E	E°7	E	E
F.B.	F.B.	F.B.	F.B.	F.B.
E°7	E	F#7	B7	E
F.B.	F.B.	F.B.	F.B.	F.B.
E	Bm7	E	Bm7	E
F.B.	F.B.	F.B.	F.B.	F.B.
E	Bm7	E	Bm7	E
F.B.	F.B.	F.B.	F.B.	F.B.

# CHORDS FOR "POP" PROGRESSION 14

## LEFT HAND

C6  $\frac{1}{2}$   $\frac{4}{4}$   
  
 F.B. C/A.B.G

F7b5  $\frac{1}{2}$   $\frac{4}{4}$   
  
 F.B.F/A.BC $\flat$

E $\flat$ °7  $\frac{1}{2}$   $\frac{4}{4}$   
  
 F.B.E $\flat$ /A.B.A

Dm7  $\frac{1}{2}$   $\frac{4}{4}$   
  
 F.B.D/A.B.A

G7  $\frac{1}{2}$   $\frac{4}{4}$   
  
 F.B.G/A.B.D

Fm7  $\frac{1}{2}$   $\frac{4}{4}$   
  
 F.B.F/A.B.C

## RIGHT HAND

C6  $\frac{1}{2}$   $\frac{4}{4}$   
  
 F.B. C/A.B.G

F7b5  $\frac{1}{2}$   $\frac{4}{4}$   
  
 F.B.F/A.BC $\flat$

E $\flat$ °7  $\frac{1}{2}$   $\frac{4}{4}$   
  
 F.B.E $\flat$ /A.B.A

Dm7  $\frac{1}{2}$   $\frac{4}{4}$   
  
 F.B.D/A.B.A

G7  $\frac{1}{2}$   $\frac{4}{4}$   
  
 F.B.G/A.B.D

Fm7  $\frac{1}{2}$   $\frac{4}{4}$   
  
 F.B.F/A.B.C

# "POP" PROGRESSION 14

("POP" WALTZ)

Moderately Slow

C6	F7b5	C6	
F.B.	F.B.	F.B.	A.B.
C6	E $\flat$ °7	Dm7	
F.B.	F.B.	F.B.	A.B.
Dm7		G7	
F.B.	A.B.	F.B.	A.B.
Dm7		Fm7	G7
F.B.	A.B.	F.B.	A.B.
C6	F7b5	C6	
F.B.	F.B.	F.B.	A.B.
C6	E $\flat$ °7	Dm7	
F.B.	F.B.	F.B.	A.B.
Dm7		G7	
F.B.	A.B.	F.B.	A.B.
Dm7		G7	
F.B.	A.B.	F.B.	A.B.
Dm7		C $\hat{6}$	
F.B.	F.B.	F.B.	F.B.



