

MUST GET OUT

WORDS & MUSIC BY ADAM LEVINE, JAMES VALENTINE,
JESSE CARMICHAEL, MICKEY MADDEN & RYAN DUSICK

♩ = 96

N.C.

sim.

Gadd9



Gadd9/F#



sim.

Gadd9/F



Gadd9/E



Gadd9/C



Gadd9



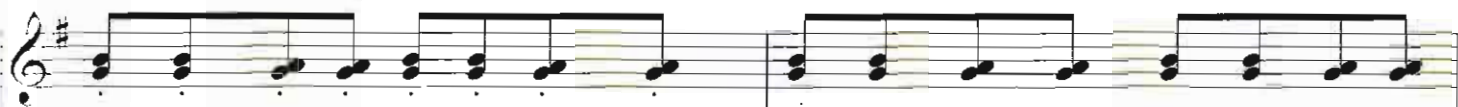
1. I've been the nee - dle and__
2. "This is not_ good- bye"__

Gadd9/F#

Gadd9/F



the thread, weav - ing fig - ure eights and cir - cles 'round your
she said, "It is just time for me to rest my head."



sim.



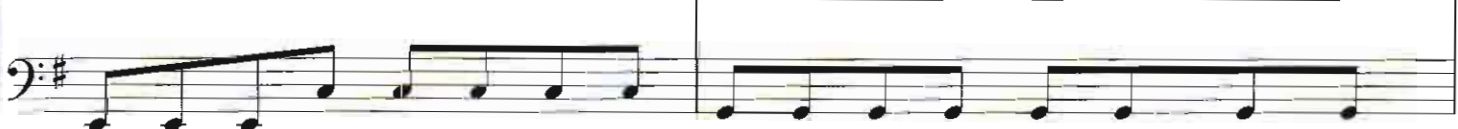
Gadd9/E

Gadd9/C

Gadd9



head. I try to laugh but cry
She does not walk, she runs



Gadd9/F#

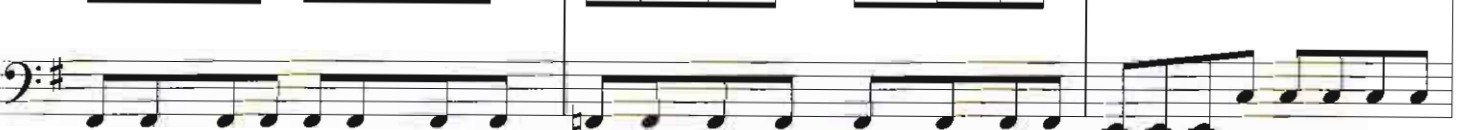
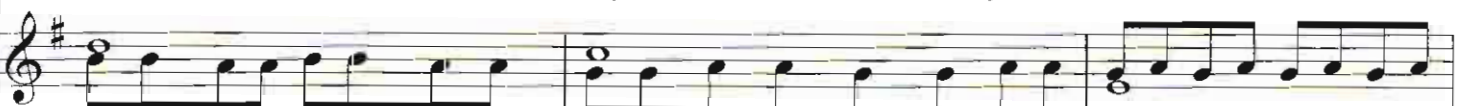
Gadd9/F

Gadd9/E

Gadd9/C



in - stead, pa - tient - ly wait to hear the words you've nev - er said.
in - stead, down these jag - ged streets and in - to my bed. When I was }



Gadd9

Gadd9/F#



Fum - bling through your dress - er drawer, for - got what I was look - ing for.



Gadd9/F



Gadd9/E



Gadd9/C



Try to guide me in the right di - rec - tion.

Gadd9



Gadd9/F#



Mak - ing use of all this time, keep - ing ev - 'ry - thing in - side,

Gadd9/F



Gadd9/E



Gadd9/C



close my eyes and lis - ten to you cry.

G



F6



Em7



I'm lift - ing you up, I'm let - ting you down, I'm dan - cing till dawn.

C Cmaj7 G D/F#

I'm fool - ing a - round. I'm not giv - ing up, I'm mak - ing your love..

Am7 C Cmaj7 1. Gadd9

This ci - ty's made us cra - zy and we must get out. Oh,

Gadd9/F# Gadd9/F Gadd9/E Gadd9/C

yeah, oh.

2. D Em7 Am7

There's on - ly so much I can do for you.

C Cmaj7 D Em7
 Oh, af - ter all of the things you've put
 me through. Oh, I'm lift - ing you up,
 I'm let - ting you down, I'm dan - cing till dawn, I'm fool - ing a - round,
 I'm not giv - ing up, I'm mak - ing your love. This ci - ty's made us cra -

F6 Em C
 G D/F# Am7

C Cmaj7 G

- zy and we must get out. I'm lift - ing you up,

F6 Em7 C Cmaj7

I'm let - ting you down, I'm dan - cing till dawn I'm fool - ing a - round.

G D/F#

I'm not giv - ing up, I'm mak - ing your love.

Am7 C Cmaj7 G

Repeat ad lib.

This ci - ty's made us cra - zy and we must get out.