

# INNOCENCE

Words and Music by AVRIL LAVIGNE  
and EVAN TAUBENFELD

Moderately slow

C#m Amaj7 C#m

Wak - ing up, I see that  
I found a place - so —

*mp*

Amaj7 C#m

ev - 'ry - thing is o - kay. } The first time in my  
safe, — not a sin - gle tear. }

Amaj7 C#m

life, and now it's so { great.  
clear. } Slow - ing down, I look a -  
Feel — calm, — I be -

Amaj7



C#m



round and now I'm so a - mazed.  
long, — I'm so hap - py here.

I think a - bout the  
It's so — strong, and now I



Amaj7

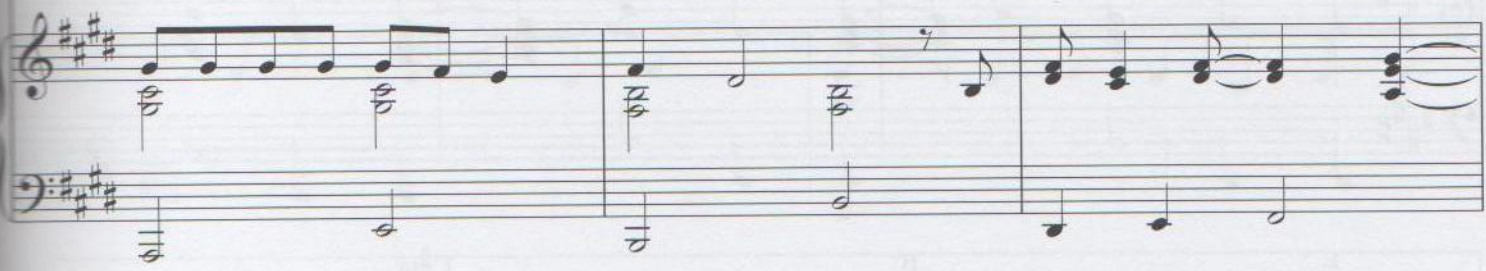


B



lit - tle things that make \_ life great. — }  
let my - self \_ be \_ sin - cere. — }

I would - n't change \_ a —



Amaj7



B



— thing — a - bout — it.

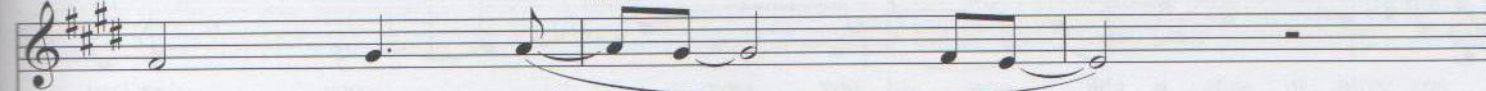
This is the



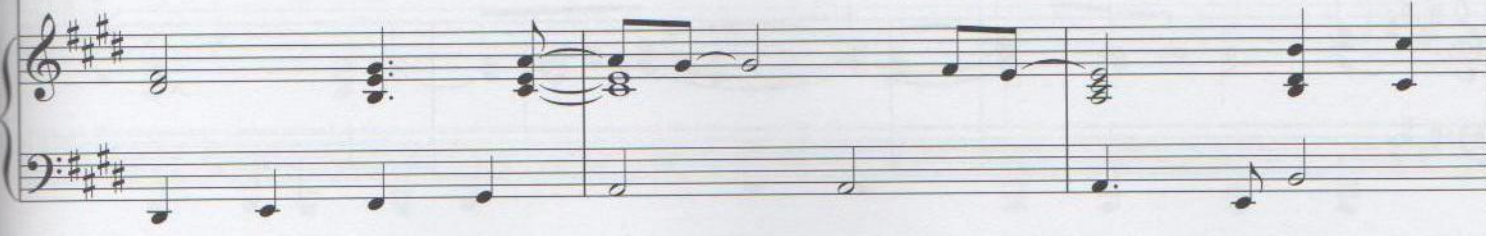
A



B



best feel - ing. —





This in - no - cence — is bril - liant. — I



hope that it will stay. — This mo - ment is per - fect. —



Please don't go a - way; — I need —



— you — now, — and I'll

Amaj7

1 B B(add4)

hold on - to it. Don't you

Detailed description: This system contains the first two lines of music. The top line is the vocal melody in treble clef with lyrics 'hold on - to it. Don't you'. Above the first measure is a guitar chord diagram for Amaj7. Above the second and third measures are guitar chord diagrams for B and B(add4). The second line shows piano accompaniment in treble clef with chords. The third line shows piano accompaniment in bass clef.

B C#m

let it pass — you by.

Detailed description: This system contains the third and fourth lines of music. The top line is the vocal melody in treble clef with lyrics 'let it pass — you by.'. Above the first measure is a guitar chord diagram for B, and above the fifth measure is a guitar chord diagram for C#m. The second line shows piano accompaniment in treble clef. The third line shows piano accompaniment in bass clef.



Amaj7 C#m Amaj7

Detailed description: This system contains the fifth and sixth lines of music. The top line shows guitar chord diagrams for Amaj7, C#m, and Amaj7. The second line shows piano accompaniment in treble clef. The third line shows piano accompaniment in bass clef.

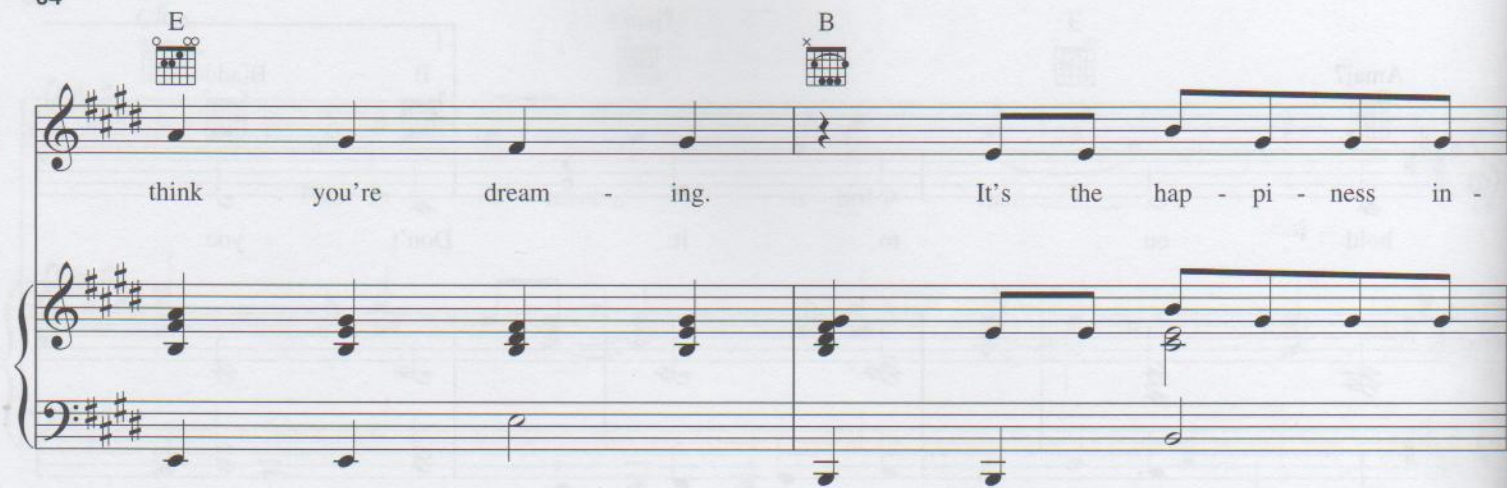
2 B7 Amaj7

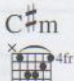


Don't you let it pass — you by. — It's a state of bliss; you

Detailed description: This system contains the seventh and eighth lines of music. The top line is the vocal melody in treble clef with lyrics 'Don't you let it pass — you by. — It's a state of bliss; you'. Above the first measure is a guitar chord diagram for B7, and above the fifth measure is a guitar chord diagram for Amaj7. The second line shows piano accompaniment in treble clef. The third line shows piano accompaniment in bass clef.

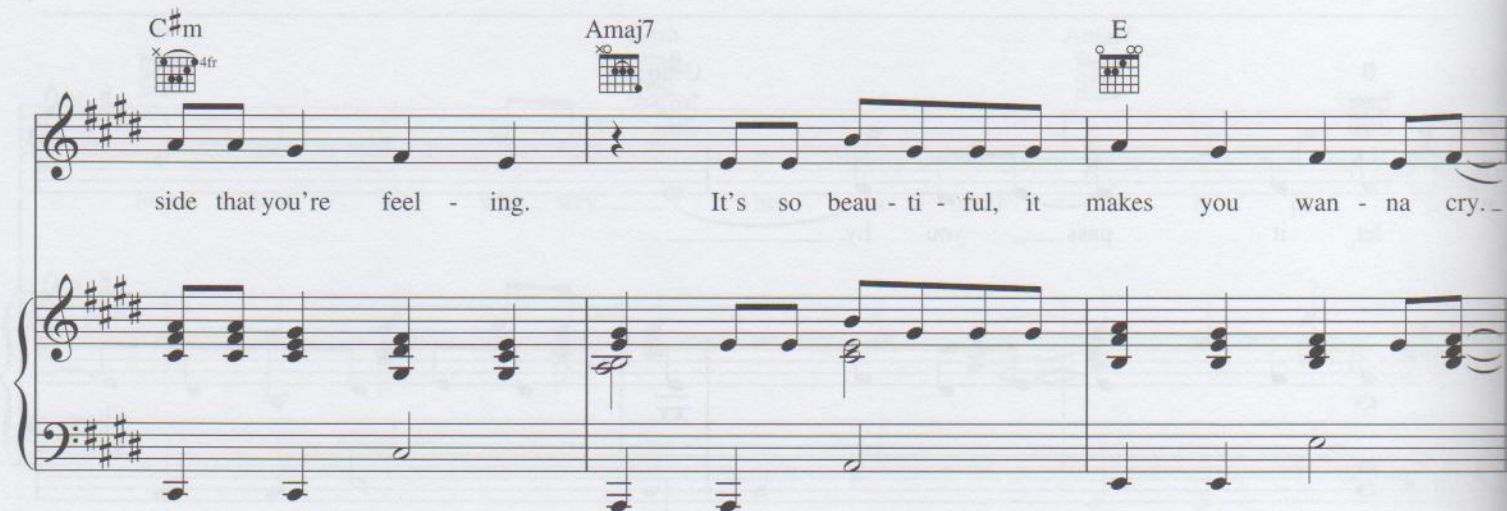
E  B 

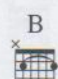

think you're dream - ing. It's the hap - pi - ness in -



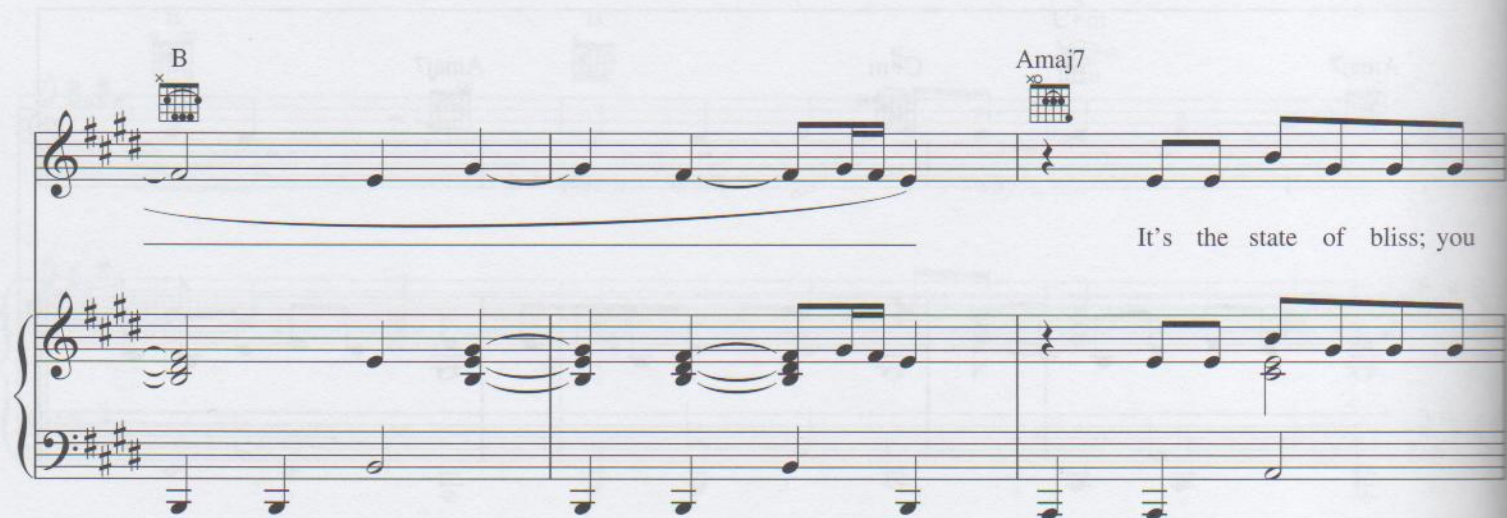
C#m  Amaj7  E 



side that you're feel - ing. It's so beau - ti - ful, it makes you wan - na cry..



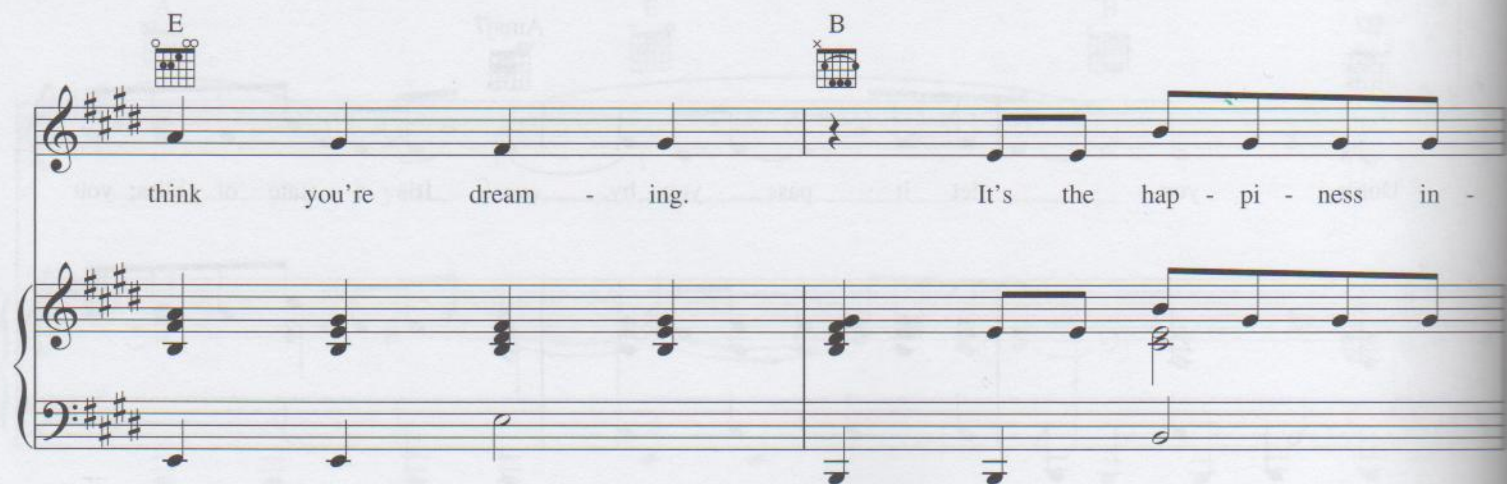
B  Amaj7 

It's the state of bliss; you



E  B 

think you're dream - ing. It's the hap - pi - ness in -





side that you're feel - ing. It's so beau - ti - ful, it



makes you wan - na cry.



(It's so beau - ti - ful, it makes you wan - na cry.) This in - no - cence



is bril - liant. (It makes me wan - na cry.)



This in - no - cence — is bril - liant. —



Please don't go a - way, — 'cause I need — you — now, —



and I'll hold on -



to it. Don't you let it pass — you by. —

Amaj7

E

This in - no - cence is bril - liant. I

B

C#m

Amaj7

hope that it will stay. This mo - ment is per - fect.

E

B

C#m

Please don't go a - way. I need -

A

E

B

you now, and I'll



Amaj7 B

hold on - to it. Don't you

This system contains the first two measures of the piece. The vocal line starts with a half note 'hold', followed by a quarter note 'on', a quarter rest, a quarter note 'to', a quarter note 'it.', a quarter rest, a quarter note 'Don't', and a quarter note 'you'. The piano accompaniment features a steady eighth-note bass line in the left hand and chords in the right hand.

C#m Amaj7

let it pass — you by. —

This system contains the next two measures. The vocal line continues with 'let it pass' (quarter note), a half rest, 'you by.' (quarter note), and a half rest. The piano accompaniment continues with eighth-note patterns in the left hand and chords in the right hand.

C#m Amaj7 C#m

This system contains the next two measures of piano accompaniment. The left hand continues with eighth-note patterns, and the right hand plays chords. The system ends with a double bar line.

Amaj7 C#m Amaj9

*rit.*

This system contains the final two measures. The piano accompaniment features a 'rit.' (ritardando) marking. The left hand has a half note chord, and the right hand has a half note chord. The system ends with a double bar line.