

L'ULTIMA NOTTE

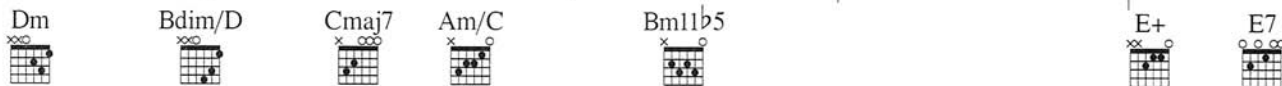
Music and Lyrics by
MARCO MARINANGELI

Slowly



mp

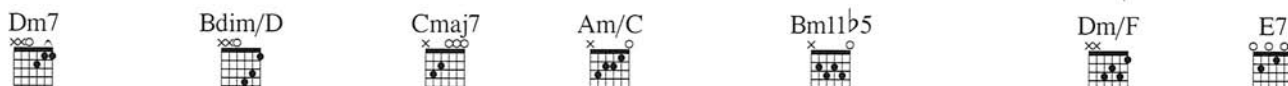
With pedal



Chi -



ssà drai, per - ché stai lí co - sí,
drai, ve - drai si a - ggiu - ste - rà.



con que - gli o - cchi fi - ssi su di me. Ve -
O - ra fa un - po' ma - le, ma se ne an - drà. I

*Recorded a half step lower.

Am Cmaj7/G F C/E

drai mi pas - se - rà; è
so - gni di e - ter - ni - tà so -

Bb/D Am/C Bm1b5 E7sus E7

che no m'as - pet - ta - vo ques - ta fo - lli. _____
no i più du - ri da _____ get - ta - re vi - a.

Play 1st time only
Fmaj7 Bm7b5/F Csus2/E C/E

Fin - ge - rò _____ mi a - bi - tue - rò; con -

Dm7 Fmaj7/C Bm1b5 E7sus E7

ti - nue - rò in _____ si - len - zio sen - za te.

C#m Asus2 Esus(add2) G#7/B#

So - lo res - to coi ri - cor - di. Do -

C#m Asus2 E/G# B7

ma - ni tut - to fi - ni - rà. Ma a - des - so,

C#sus(add2) C#m F#m C#m/E F#m/A C#m/G#

res - ta qui, qui con me, per - ché sa - rà l'ul - ti - ma

1 Amaj7 F#m/A C#m/G# G#7 C#m

no - te in - sie - me a - te. Ve -

2

Amaj7 F#m/A C#m/G# G#7 Cm Ebmaj7/Bb Abmaj7 Fm/Ab Ebsus2/G Eb/G

not - te in - sie - me a te.

Detailed description: This system contains the first two lines of music. The top line shows guitar chords: Amaj7, F#m/A, C#m/G# (4fr), G#7 (4fr), Cm (3fr), Ebmaj7/Bb (3fr), Abmaj7, Fm/Ab, Ebsus2/G, and Eb/G (3fr). The vocal line begins with the lyrics 'not - te in - sie - me a te.' The piano accompaniment is in 4/4 time, with the right hand playing chords and the left hand playing a bass line.

Db/F Cm/Eb N.C. Gbmaj7 Bbm/F F7

Detailed description: This system contains the second and third lines of music. The top line shows guitar chords: Db/F, Cm/Eb (3fr), N.C., Gbmaj7, Bbm/F, and F7. The piano accompaniment continues, featuring a triplet of eighth notes in the right hand and a steady bass line in the left hand.

Gbmaj7 Ab/Gb Db/F

Se - gui - rò, sop - por - te - rò

Detailed description: This system contains the third and fourth lines of music. The top line shows guitar chords: Gbmaj7, Ab/Gb (4fr), and Db/F. The vocal line continues with the lyrics 'Se - gui - rò, sop - por - te - rò'. The piano accompaniment features a triplet of eighth notes in the right hand.

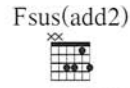
Ebm7 Gbmaj7/Db Cm11b5 F7

ques - to gran - do - lo - re sen - za te.

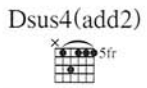
rit.

Detailed description: This system contains the fourth and fifth lines of music. The top line shows guitar chords: Ebm7 (6fr), Gbmaj7/Db (4fr), Cm11b5, and F7. The vocal line concludes with the lyrics 'ques - to gran - do - lo - re sen - za te.' The piano accompaniment ends with a 'rit.' (ritardando) marking and a final chord.

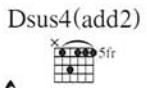
A tempo



So - lo res - to coi ri - cor - di. Do -



ma - ni tut - to fi - ni - rà. Ma a - des - so,



N.C.

res - ta qui, qui con me, per - ché sa - rà l'ul - ti - ma



not - te in - sie - me a te.

B \flat F/A Gm Dm/F N.C.

Ques - ta qui sa - rà l'ul - ti - ma

B \flat maj7 Gm/B \flat Dm/A A7

not - te in sie - me a

Dm B \flat maj7 Gm Em7 \flat 5

te.

D5