

# Veer zeent Jeam en.....

Handwritten musical notation for the first system of 'Veer zeent Jeam en.....'. The notation is on a single staff in 4/4 time with a key signature of one flat (B-flat). The melody consists of quarter and eighth notes. The piece concludes with a double bar line and a sharp sign (#) on the final note.

intro | ZANG | Treut | ZANG | Treut | ZANG | SOLOGITAAR | TREUT | ZANG

# Solicitezen!

Handwritten musical notation for the second system of 'Solicitezen!'. The notation is on two staves in 4/4 time with a key signature of one flat (B-flat). The first staff begins with a treble clef and a key signature change to one flat. It contains a melody with a double bar line and repeat sign, followed by a section with a 'zang' annotation and a dynamic marking '<'. The second staff continues the melody with a key signature change to one sharp (F#) and includes a section marked '3x' and another marked '5x'.

Tromped | Zang | Tromped | Zang | Tromped | Zang | Tromped | Tromped  
+ Sier

4

# Dunne

Gijs

Rehein

b Trumpet

Sier



3

1 2 1 3 2 1 4 2 1

# Present Arms

↑  
langzaam  
+ bes lang  
Jean  
Vanden  
aan

♭ Trumpet

1

2

3

4

# Proemuloacri!

Handwritten musical notation on two staves. The first staff is in treble clef with a 4/4 time signature. The second staff is in bass clef with a 5/4 time signature. The notation includes various notes, rests, and accidentals. Annotations include "2x" above the first staff, "rang laut" written above the first staff, "px" above the second staff, and "3" above the second staff. The piece ends with a double bar line and repeat dots.

Handwritten musical notation on a single treble clef staff with a 4/4 time signature. The notation includes notes, rests, and accidentals. An annotation "2x" is written above the staff. The piece ends with a double bar line and repeat dots.

Handwritten musical notation on a single treble clef staff with a 5/4 time signature. The notation includes notes, rests, and accidentals. An annotation "7x" is written above the staff. The piece ends with a double bar line and repeat dots.

Handwritten musical notation on a single treble clef staff with a 5/4 time signature. The notation includes notes, rests, and accidentals. Annotations include "3" above the staff, "3x" above the staff, and "Gibson" written above the staff. The piece ends with a double bar line and repeat dots.

Handwritten musical notation on a single treble clef staff with a 4/4 time signature. The notation includes notes, rests, and accidentals. An annotation "2x" is written above the staff. The piece ends with a double bar line and repeat dots.

Handwritten musical notation on a single treble clef staff with a 4/4 time signature. The notation includes notes, rests, and accidentals. Annotations include "3" above the staff, "3" above the staff, "x3" above the staff, and "Zongy" written above the staff. The piece ends with a double bar line and repeat dots.

Handwritten musical notation on a single treble clef staff with a 4/4 time signature. The notation includes notes, rests, and accidentals. An annotation "x2" is written above the staff. The piece ends with a double bar line and repeat dots.

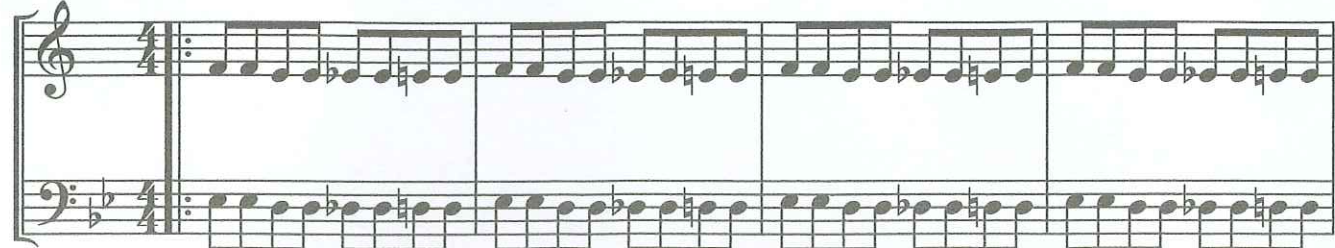
Five sets of empty musical staves, each consisting of five lines, provided for further notation.

# Zaatman

Gijs

♭ Trumpet

♭ Trombone




pt.

sn.




pt.

sn.



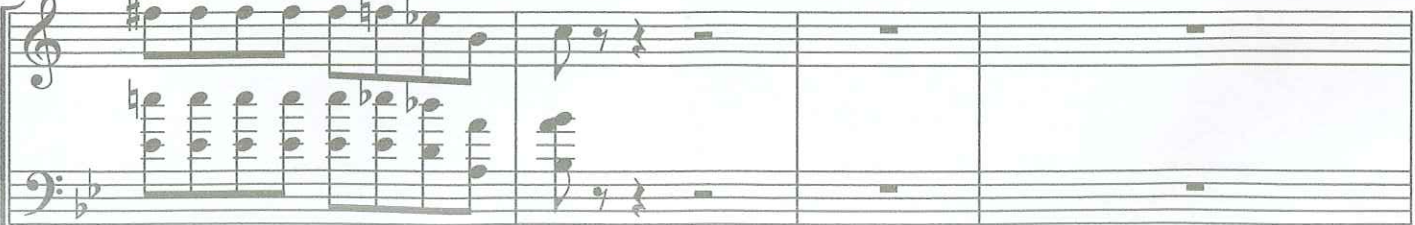
pt.

sn.



pt.

sn.





# Trööt - Trööt

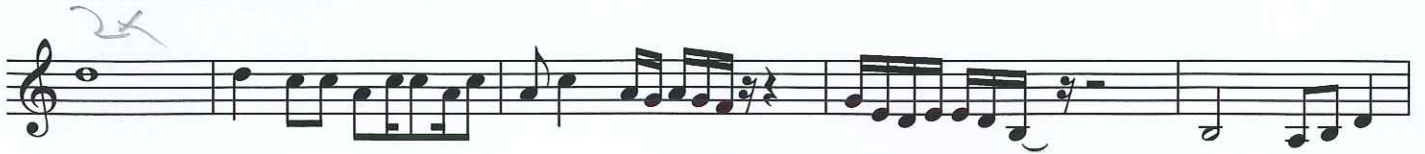
*vers*

*refrain*

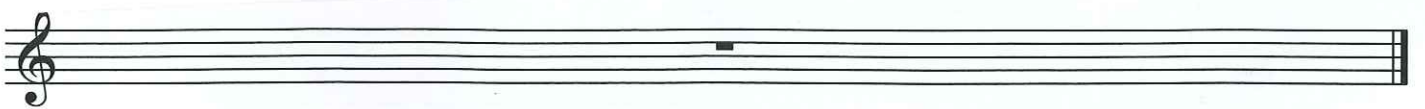
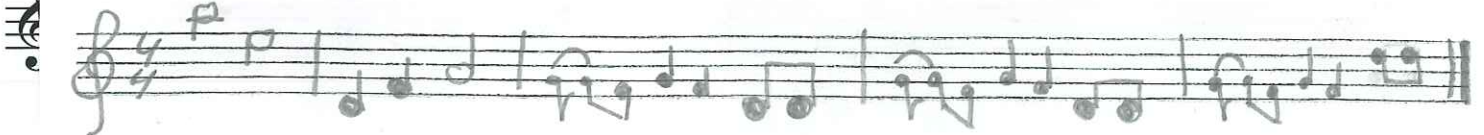
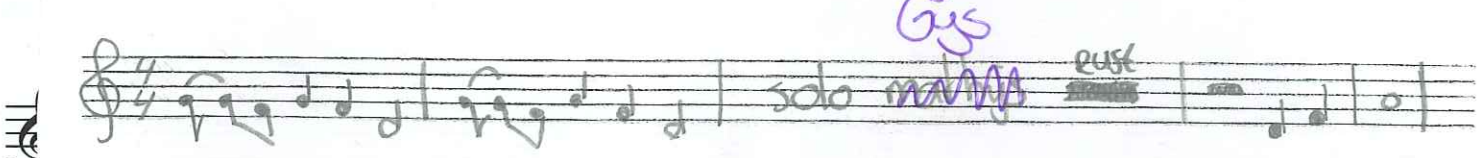
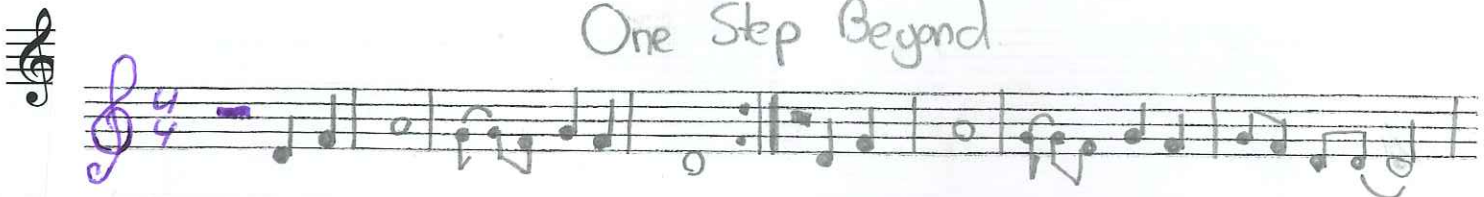
# one step solo

[Composer]

♭ Trumpet



## One Step Beyond





9

# DANS AMELBERGA

Handwritten musical notation for 'DANS AMELBERGA'. The piece is written on three staves in treble clef. The first staff contains the first line of music, divided into four measures by Roman numerals I, II, III, and IV. The second and third staves continue the melody. The notation includes various note values, rests, and accidentals (flats and naturals). At the end of the third staff, there are seven vertical lines of varying heights, possibly representing a rhythmic pattern or a specific instruction.

# NACHT - TREIN NIET COMPLEET

Handwritten musical notation for 'NACHT - TREIN NIET COMPLEET'. The piece is written on three staves in treble clef. The first staff contains the first line of music, ending with a double bar line and repeat dots. The second and third staves continue the melody. The notation includes various note values, rests, and accidentals (sharps and naturals). There are markings '7x' above the second staff and '3x' below the third staff, indicating repeated sections.

10

# Slackers

Piepke

♭ Trumpet

*Trompet*

*2x*

*Solo*

*Intro | Trompet | ZANG | Trompet | ZANG | Solo | ZANG |*

*(4x)*

*Kornbore solo?*

inbo | rehein | rang | 3 | 4 | rang | 3 | 4 | rehein | inbo

11

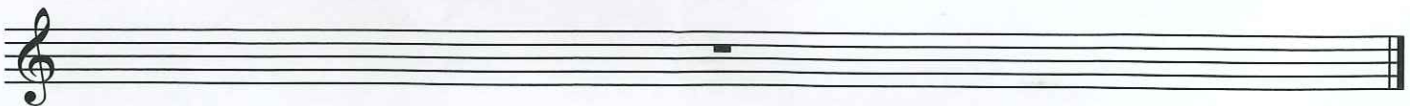
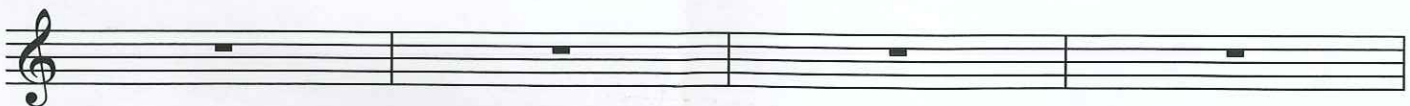
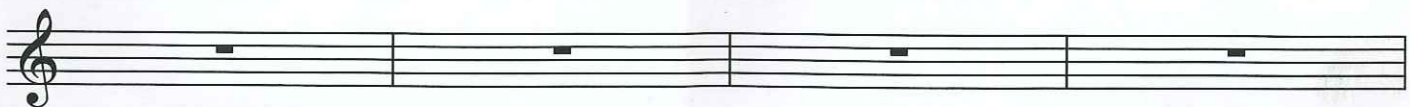
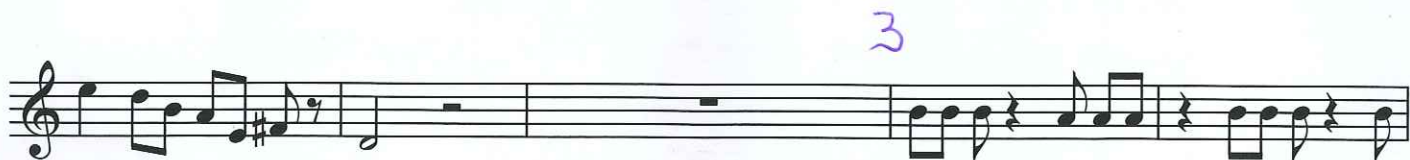
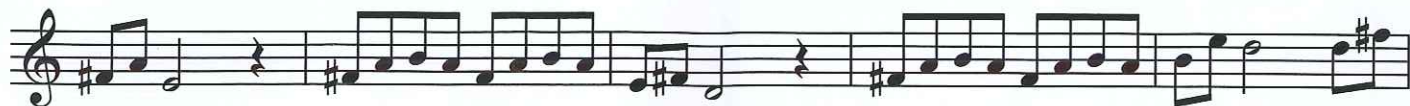
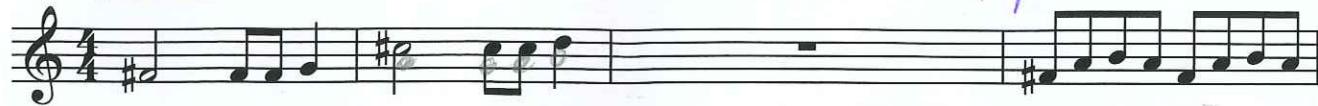
# 10/10

*inbo*

*Rehein*

[Composer]

b Trumpet



# Aw Patsche

[Composer]

3 Trumpet

Solo Kai



Rehein



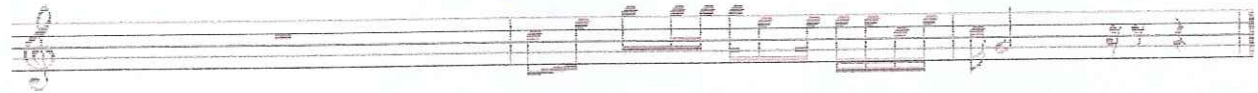
Tussen



Sieren



Sieren



Solo Kai | Rehein | Tussen | Rehein | Tussen |  
 Gitar solo | tussen | rehein (staccato) | Tussen | Solo Kai