

- 2 **OPTIONAL NARRATION:** Alleluia! Christ is risen—He is risen indeed! And that same power that raised Christ from the grave has also raised us, allowing us to stand without shame before the throne of grace. “For we know that our old self was crucified with Christ . . . and just as Christ was raised from the dead, we too may live a new life.” (Romans 6:6, 4)

## I Stand Redeemed

Words and Music by  
**KELLY GARNER,**  
**CHRISTINA DeGAZIO**  
 and **BELINDA SMITH**  
*Arranged by Camp Kirkland*

Warmly ♩ = 66

1/6 N.C. C E A B♭ E♭ G A♭ G♭

NARRATOR: “Alleluia! Christ is . . .”

3 D♭2(no3) B♭m7(4)

6 G♭9 E♭7sus A♭sus D♭2(no3)

9 B♭m7(4) G♭9 2/7 E♭7sus A♭sus mp

Male SOLO (Tenor)  
 (with much freedom)

1. When I

1/7 This symbol refers to the corresponding track numbers on the ChoralTrax Accompaniment CD.  
 The top number in each box refers to the Stereo Trax; the bottom number, to the Split Trax.

Performance time: 4:22

© 1999 Centergy Music/Centergetic Music (both admin. by ICG)  
 All Rights Reserved. Used by Permission.

EVEN IF YOU POSSESS A CCLI LICENSE, YOU MAY NOT COPY THIS MUSIC.  
 If you have questions about CCLI, please call 800/234-2446.

12 *mp - mf*

think of all my faults and all my fail-ures, when I con-  
 2. E - ven at my best, I am un - wor - thy.

*CHOIR (2nd time only)*  
*mp*

Ooo

12 *mp - mf*

D $\flat$ 2(no3) A $\flat$ /C B $\flat$ m D $\flat$ /A $\flat$

14

sid - er all the times I've let God down, I am  
 I have noth - ing pre - cious I can give; a

Ooo

14

G $\flat$ 2 D $\flat$ /F E $\flat$ m

16

hum-bled by the grace He has ex-tend-ed, I'm a-  
 brok-en life is all I have to of-fer, and

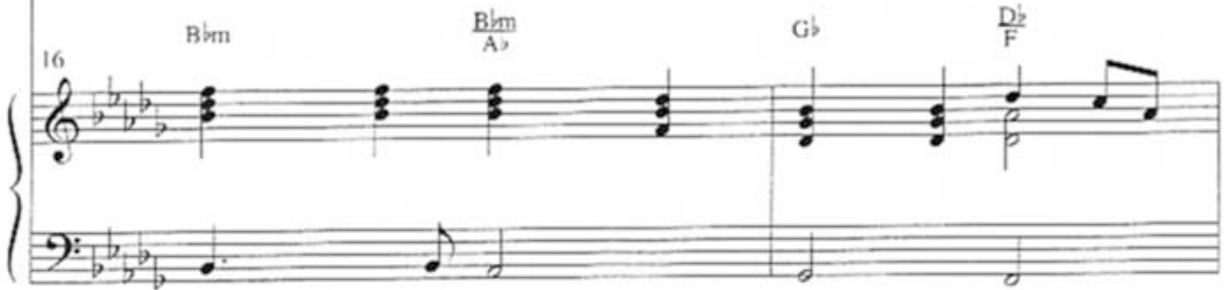


Ah



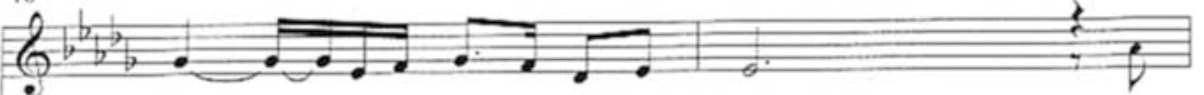
16

Bbm Bbm A<sup>b</sup> G<sup>b</sup> D<sup>b</sup>/<sub>F</sub>



18

mazed at the mer-cy I have found. The  
 yet, it is a price-less gift to Him.




Ooo



18

Ebm Ebm A<sup>b</sup>/<sub>C</sub> G<sup>b</sup>/<sub>Bb</sub> Ab



20

*mf*



I could nev - er earn love on my own, yet  
bit - ter mark of sin will nev - er fade a - way, but



Ah

*mf*

but



20

G $\flat$

G $\flat$

D $\flat$

D $\flat$



22

$\frac{3}{8}$  (1st time)



ev - 'ry time I come be - fore His throne: I stand re -  
I can come be - fore Him un - a - shamed.

*f*



I can come be - fore Him un - a - shamed.

*f* Both times

I stand re -



E $\flat$ m7

D $\flat$

F

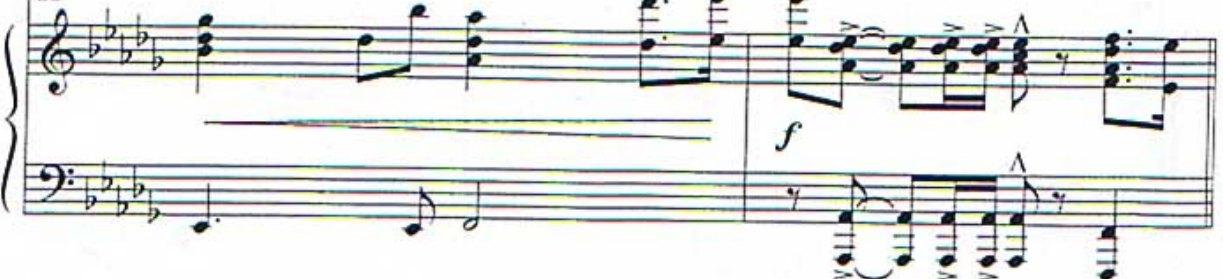
Absus

A $\flat$

D $\flat$

F

22



24

deemed by the blood of the Lamb, I stand re-

deemed by the blood of the Lamb, I stand re-

24

G $\flat$  G $\flat$  A $\flat$  D $\flat$  D $\flat$  sus E $\flat$  F

26

deemed be - fore the great I AM. When He looks at

deemed be - fore the great I AM.

26

G $\flat$  D $\flat$  sus A $\flat$  sus G $\flat$  D $\flat$  sus F

28

me, He sees the nail-scarred hands — that bought my lib - er - ty, —

Ah

28

G $\flat$  F $\sharp$ sus E $\flat$  B $\flat$ sus $\frac{4}{2}$  B $\flat$ m D $\flat$ sus $\frac{4}{2}$  A $\flat$  D $\flat$  $\frac{6}{9}$  A $\flat$

30

1. (Back to p. 3, m. 12)

I stand re - deemed.

I stand — re - deemed.

30

G $\flat$  A $\flat$ 7sus A $\flat$ 7 G $\flat$  A $\flat$  D $\flat$ 2(no3) B $\flat$ m7(4) G $\flat$  $\frac{6}{9}$  (Back to p. 3, m. 12)

*mf*

33 2.

deemed. When He looks at me, He sees the nail-scarred

deemed. Ah

33 2. D $\flat$  G $\flat$  F $\sharp$  sus E A

35 5/10

hands— that bought my lib - er - ty, — I stand re -

I stand re -

35 B $\flat$  sus $\frac{4}{2}$  B $\flat$  m D $\flat$  sus A $\flat$  D $\flat$  A $\flat$  G $\flat$  A $\flat$  7 sus A $\flat$

37

deemed! —————

*ff*

deemed! I stand re - deemed ————— by the blood of the

3 3

3 3

Detailed description: This system contains the first two staves of music. The top staff is a vocal line starting with a treble clef and a key signature of three flats. It begins with a melodic phrase for the word 'deemed!' followed by a long horizontal line indicating a sustained note. The piano accompaniment starts in the second staff with a treble clef, featuring a series of chords and triplets. The bottom staff is a bass line with a bass clef, providing harmonic support. The key signature remains three flats throughout.

37

Bb7sus Bb7 Eb G Ab Ab/Bb

*ff*

3

Detailed description: This system shows the piano accompaniment for the first system. It consists of two staves: a treble staff and a bass staff. The treble staff contains chords and melodic fragments, with dynamic markings like *ff* and articulation marks. The bass staff contains a steady bass line. Chord symbols are placed above the treble staff: Bb7sus, Bb7, Eb G, Ab, and Ab/Bb. A triplet of eighth notes is marked with a '3' in the treble staff.

39

Lamb, ————— I stand re - deemed be - fore the great I

Detailed description: This system contains the second two staves of music. The top staff is a vocal line starting with a treble clef and a key signature of three flats. It begins with a melodic phrase for the word 'Lamb,' followed by a long horizontal line indicating a sustained note. The piano accompaniment starts in the second staff with a treble clef, featuring a series of chords and melodic fragments. The bottom staff is a bass line with a bass clef, providing harmonic support. The key signature remains three flats throughout.

39

Eb Eb/sus F Eb G Ab Eb G

Detailed description: This system shows the piano accompaniment for the second system. It consists of two staves: a treble staff and a bass staff. The treble staff contains chords and melodic fragments, with dynamic markings like *ff* and articulation marks. The bass staff contains a steady bass line. Chord symbols are placed above the treble staff: Eb, Eb/sus, F, Eb, G, Ab, and Eb G. A triplet of eighth notes is marked with a '3' in the treble staff.



41

And when He looks at me, He sees the nail-scarred

AM. Ah

41

B $\flat$ sus B $\flat$  A $\flat$  E $\flat$  G A $\flat$  Gsus G $\flat$  B

43

hands— that bought my lib - er - ty, — I stand re -

I stand re -

43

Csus $\frac{4}{2}$  Cm E $\flat$ sus B $\flat$  E $\flat$  B $\flat$  A $\flat$  B $\flat$ 7sus B $\flat$ 7 A $\flat$  B $\flat$

45

deemed, I stand re - deemed,

deemed, I stand re - deemed,

Cm Cm/Bb A Bbsus Bb Ab/Bb Eb Eb

48

*molto rit.* *fff*

I stand, I stand re - deemed!

*molto rit.* *fff*

I stand re - deemed!

Fm7 N.C. A/m Bbm7(4) Abm/Cb Abm/Cb Eb

*molto rit.* *fff*