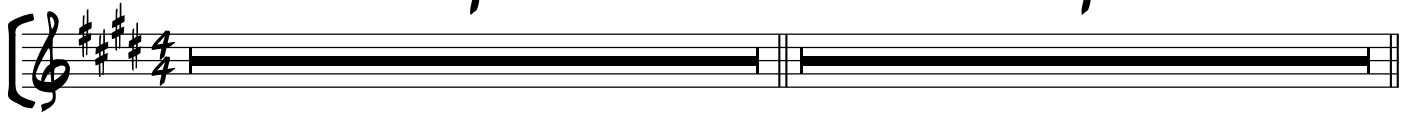


(STANDING ON) SHAKY GROUND

♩ = 95 (Funk/Soul - Swing ♩'s)

4

4



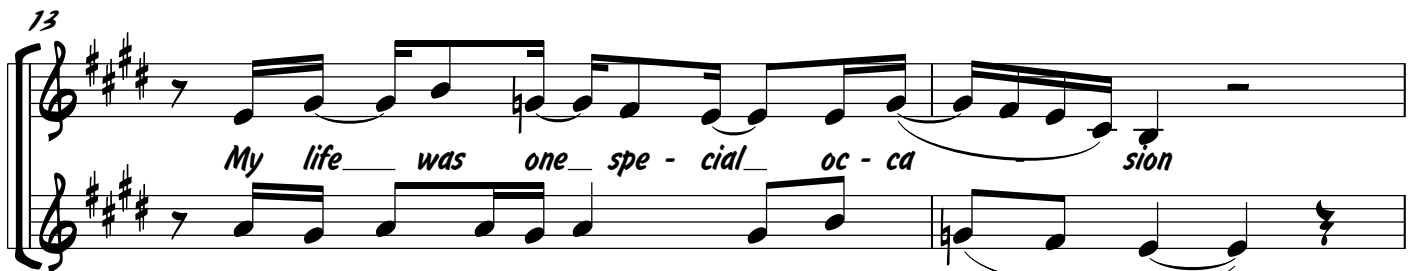
A *S.* (No Repeat On D.S.)



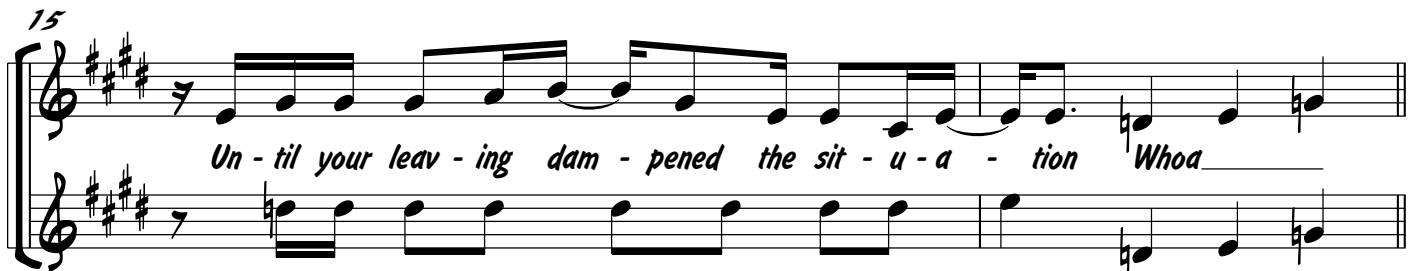
2. Oh you'd be - ter throw me a life pre - ser - ver, yeah



Hav - en't seen this much bad luck in years



Bet - ter throw me a life pre - ser - ver



I'm a - bout to drown in my own tears Whoa

B



To Coda 

21



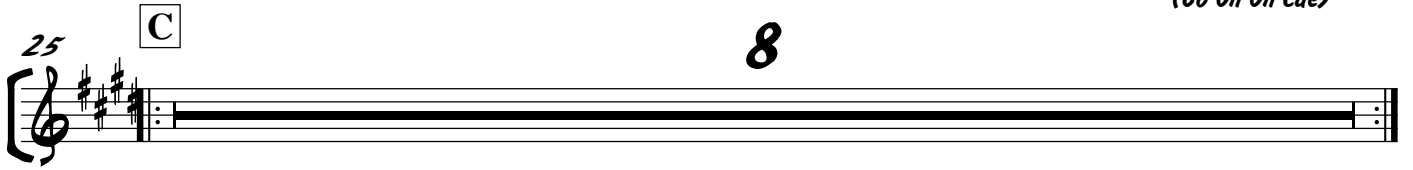
Stan-din' on sha-ky ground_ Ev-er since you put me down_

Open For Solos

(Go On On Cue)

25

C



8


D (Vocal Adlib Between Lines)

33



Stan-din' on sha-ky ground_ Ev-er since you put me down_ Whoa_

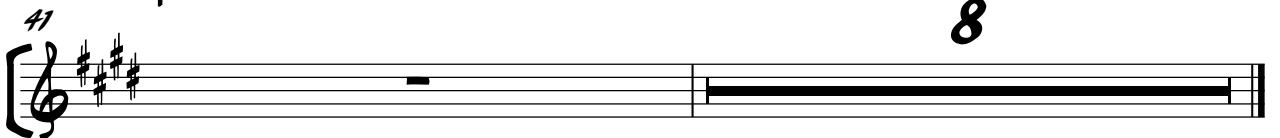
37



Stan-din' on sha-ky ground_ Ev-er since you put me down_ D.S. al Coda

Coda 

41



8

Tenor Saxophone

(STANDING ON) SHAKY GROUND

Phoebe Snow ver.
Arr. Shaun Evans

♩ = 95 (Funk/Soul - Swung ♩'s)

4 4

S. (No Repeat On D.S.)

9 **A** *Tacet 1st X*

mf

13

17 **B**

21 *To Coda* \oplus

Open For Solos

25 **C** 7 *(Go On On Cue)*

33 D 7

D.S. al Coda

Coda 41

43

47

Trumpet

(STANDING ON) SHAKY GROUND

Phoebe Snow ver.
Arr. Shaun Evans

♩ = 95 (Funk/Soul - Swung ♩'s)

4 4

ff (No Repeat On D.S.)

9 **A** *Tacet 1st X*

mf

13

17 **B**

21 *To Coda* ☉

Open For Solos

25 **C** 7 *(Go On On Cue)*

33 D 7

D.S. al Coda

Coda 41

44

47

Bass

(STANDING ON) SHAKY GROUND

Phoebe Snow ver.
Arr. Shaun Evans

♩ = 95 (Funk/Soul - Swung 1/2's)

3

mf

7

9

No Repeat On D.S.

A E7 A/E B7 E7

12

A/E B7

15

E7 C#m D7 Eb7

17

B E7 A/E B7 E7

20

A/E B7

23

E7 C#m D7 Eb7

To Coda

Open For Solos

Bass

2

25 C E7 A/E B7 E7

28 A/E B7

31 E7 C#m D7 Eb7 D (Go On On Cue)

34 5 C#m7 D7 Eb7

D.S. al Coda

Coda

41 E7 A/E B7 E7 *f*

44 A/E B7

47 E7 C#m D7 Eb7

(STANDING ON) SHAKY GROUND

♩ = 95 (Funk/Soul - Swung ♩'s)

9 **A** E7 (No Repeat On D.S.) A/E B7 E7

12 A/E B7

15 E7 C#m7 D7 Eb7

17 **B** E7 A/E B7 E7

22 A/E B7 E7 C#m D7 Eb7 To Coda

Open For Solos

25 C E7 A/E B7 E7

(Go On On Cue)

30 A/E B7 E7 C#m7 D7 Eb7

33 D 6 C#m7 D7 Eb7

D.S. al Coda

Coda

41 E7 A/E B7 E7

f

46 A/E B7 E7 C#m7 D7 Eb7

Drums

(STANDING ON) SHAKY GROUND

Phoebe Snow ver.
Arr. Shaun Evans

♩ = 95 (Funk/Soul - Swung ♩'s)

3

mf

S (No Repeat On D.S.)

A *sim...* (4)

13 (6)

B *sim...* (4)

21 (6) *To Coda*

Open For Solos

C *sim...* (4)

29 (6) *(Go On On Cue)*

Drums

33 **D** +

(4)

sim...

37

(6)

D.S. al Coda

Coda

41

f

sim...

44

(4)

(6)

47

(6)

(STANDING ON) SHAKY GROUND

♩ = 95 (Funk/Soul - Swung ♩'s)

4 2

mp cresc.

A (No Repeat On D.S.) *Tacet 1st X* A/E B7 E7

mf

13 *Tacet 1st X* A/E B7 E7 C#m7 D7 E7

17 **B** E7 A/E B7 E7

21 A/E B7 E7 C#m7 D7 E7 *To Coda*

Open For Solos

25 **C** E7 A/E B7 E7

(Go On On Cue)

30 A/E B7 E7 C#m7 D7 Eb7

33 **D** 6 C#m7 D7 Eb7

D.S. al Coda

Coda ⊕

41 E7 A/E B7 E7

45 A/E B7 E7 C#m7 D7 Eb7