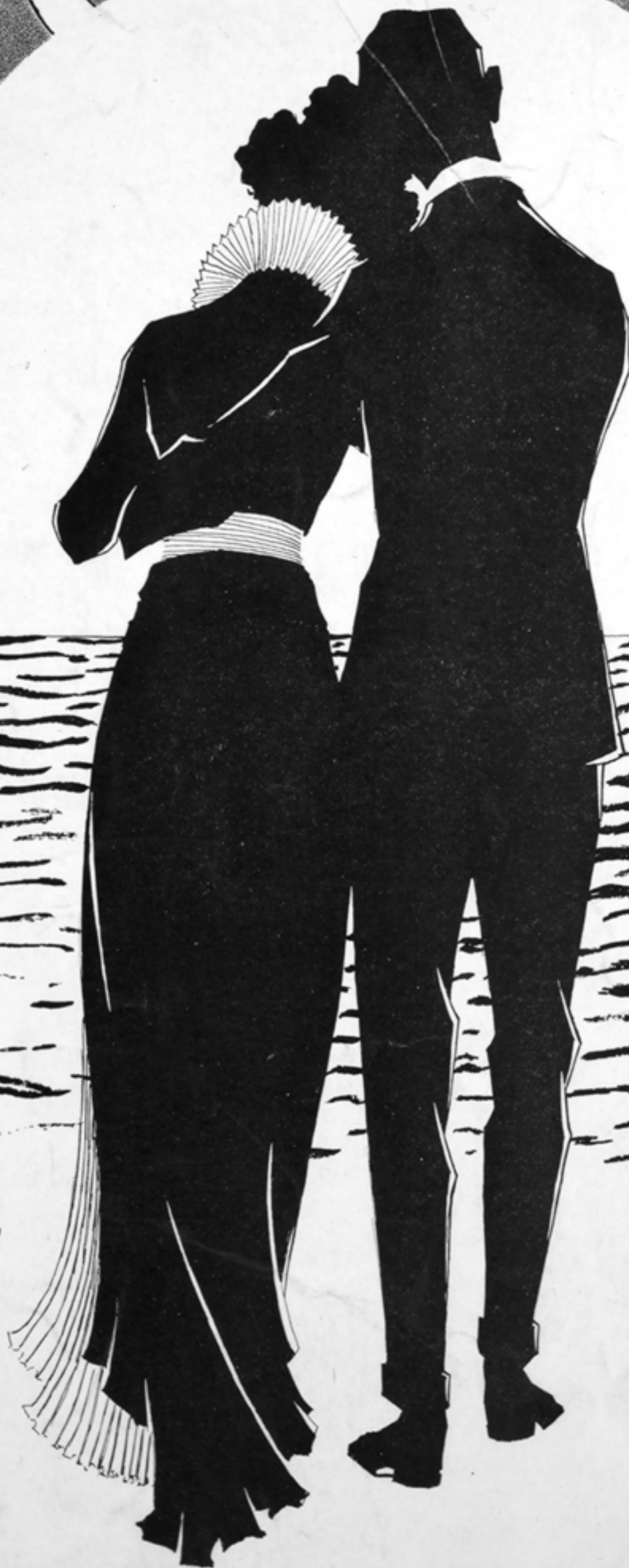


# HONEY- MOON



WORDS BY  
BROUGHTON TALL

MUSIC BY  
WILLIAM OWENS



B.H. WALTZ.

TALL-OWENS PUBLISHING CO., SOLAX THEATRE BUILDING,  
1204 W. BALTIMORE ST., BALTIMORE, MD.



# HONEY-MOON.

Words by  
BROUGHTON TALL.  
*Moderato marcato.*

Music by  
WILLIAM OWENS.

Piano introduction in common time, marked *Moderato marcato*. The piece begins with a fortissimo (*ff*) dynamic and concludes with a mezzo-forte (*mf*) dynamic. The music features a series of chords in the right hand and a simple bass line in the left hand.

Voice line for the first two lines of lyrics, marked *p* (piano). The melody is simple and follows the rhythm of the lyrics.

1. One lit - tle miss, O - ceans  
2. Days have gone by, time draw -

Piano accompaniment for the first two lines of lyrics, marked *p*. It includes a *Vamp till ready* section at the beginning. The accompaniment consists of chords in the right hand and a bass line in the left hand.

Voice line for the last line of lyrics, continuing the melody from the previous lines.

of bliss, Stroll - ing by the sad sea waves; One lit -  
ing nigh, Hon - ey - moon soon will be o'er; Hearts fill'd

Piano accompaniment for the last line of lyrics, continuing the accompaniment from the previous lines.



tle boy, Bar-rels of joy, They've been mar-ried just two days. Time, late  
with woe, Heads hang-ing low, Sad-ly they stroll 'long the shore. Moon's pal-

at night, just the moon light Steal-ing down from up on high. As they  
ing light fad-ing from sight Be-fore the fast dawn-ing day. With sobs

em-brace moon hides his face Then plead-ing to him they sigh:  
and sighs and tear fill'd eyes Once more to him they both say:

Honey-moon.



CHORUS.

*p-f*

Oh, hon - ey-moon keep on shin - ing, For just us two. Oh, re -

*p-f*

mem - ber two hearts pin - ing al - ways for you. How - e'er

hard it may en - deav - or Time can nev - er mem - 'ries sev - er,

We want you now and for - ev - er Hon - ey - moon. Oh, moon.

*f rit.* **1** *fz* **2** *D.C.*

Honey-moon.