

*Ad pastores descendit angelus,  
 Dicens eis: natus est Dominus in Bethlechem.  
 Loquebantur pastores inuicem,  
 Transcimus ad nouum hominem in Bethlechem.  
 Ad praesepe stant bos & asinus,  
 Cognouerunt quis esset Dominus in Bethlechem.  
 In octaua dum circumciditur,  
 Nomen ei Iesus imponitur in Bethlechem.  
 Trini, trino, trina dant munera,  
 Regi regum sugenti vbera in Bethlechem.  
 Collyridas simul cum nectare  
 Benedicat Christus Rex gloriae in Bethlechem.*

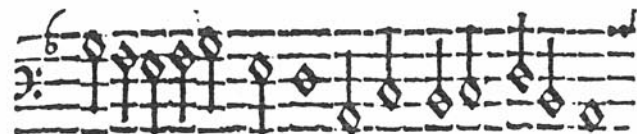


*Ve maris stel la  
 Deitatis cel la*

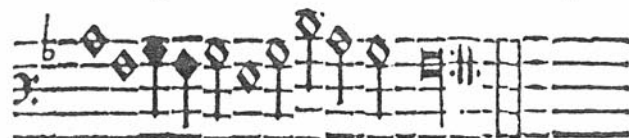


*lucens miseris,  
 porta principis,*

Paradi-



*Paradisi patens pons tu Cypressus Sion mons  
 Patris sub umbra mine natus es ex Virgine*



*peccatorum fons.  
 sacro flammis ne.*

*Regis diadema, stola praesidis,  
 Samsonis problema, funda Dauidis,  
 Turris per quam transit gens, Deū verū timens ens,  
 ne desperet flens.  
 Tu es Salomonis res, In te tota nostra spes,  
 agitur per tres.*

*Autor pietatis, spes fidelium,  
 Radix sanctitatis, fer auxilium,  
 Urna caeli manans ros, tu es ille Iesse flos,  
 Qui saluauit nos.*

*Rubus quem non, vrit pyr, posuimus sub patris ir,  
 Tu caelestis vir.*