

Suite 1 for Cello Solo

JOHANN SEBASTIAN BACH
BWV 1007

Prélude

3

6

9

12

15

18

21

24

27

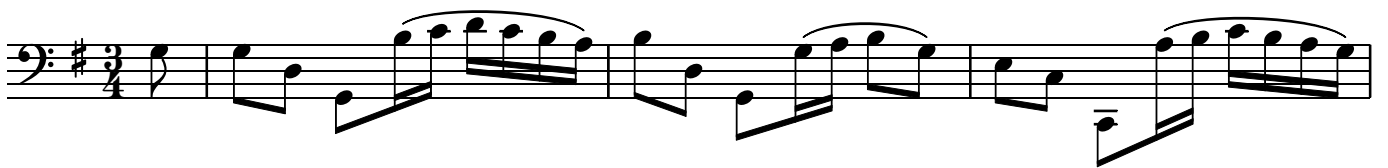


Allemande





Courante



Musical score for a piece, measures 20-39. The score is written in bass clef with a key signature of one sharp (F#). The time signature is 3/4. The music consists of six staves of music, each starting with a measure number (20, 24, 28, 32, 35, 39). The notation includes eighth and sixteenth notes, often beamed together, with various articulations such as slurs and accents. The piece concludes with a double bar line and a repeat sign.

Sarabande

Musical score for a piece titled "Sarabande". The score is written in bass clef with a key signature of one sharp (F#) and a time signature of 3/4. The music consists of four staves of music, each starting with a measure number (1, 5, 9). The notation includes eighth and sixteenth notes, often beamed together, with various articulations such as slurs, accents, and trills. The piece concludes with a double bar line and a repeat sign.

Menuet 1

Musical score for Menuet 1, bass clef, 3/4 time, key of D major. The score consists of four staves of music. The first staff begins with a treble clef and a trill. The second staff starts at measure 7 and includes a repeat sign. The third staff starts at measure 13. The fourth staff starts at measure 19 and ends with a double bar line.

Menuet 2

Musical score for Menuet 2, bass clef, 3/4 time, key of B minor. The score consists of four staves of music. The first staff begins with a treble clef. The second staff starts at measure 7 and includes a repeat sign. The third staff starts at measure 13. The fourth staff starts at measure 19 and ends with a double bar line.

Gigue

Musical score for Gigue, bass clef, 6/8 time, key of D major. The score consists of one staff of music. It begins with a treble clef and a trill.

